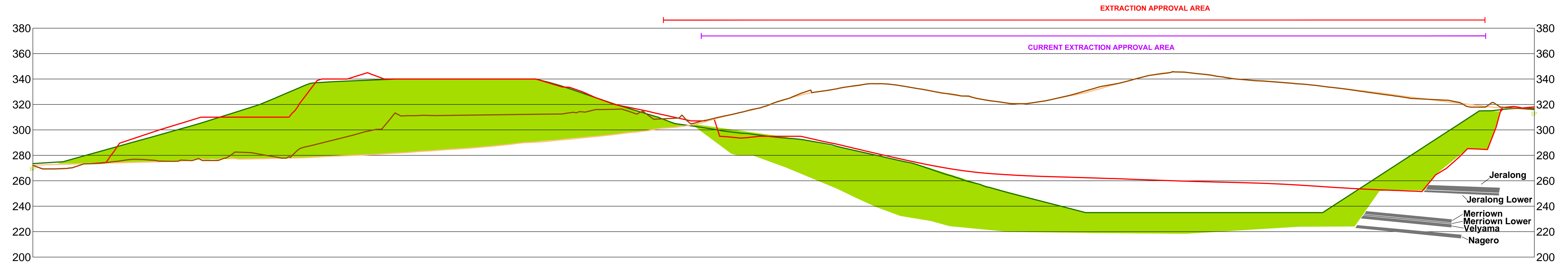


**Section B-B'**  
Scale 2:1 (VER:HOR)

E 228404  
N 6605844

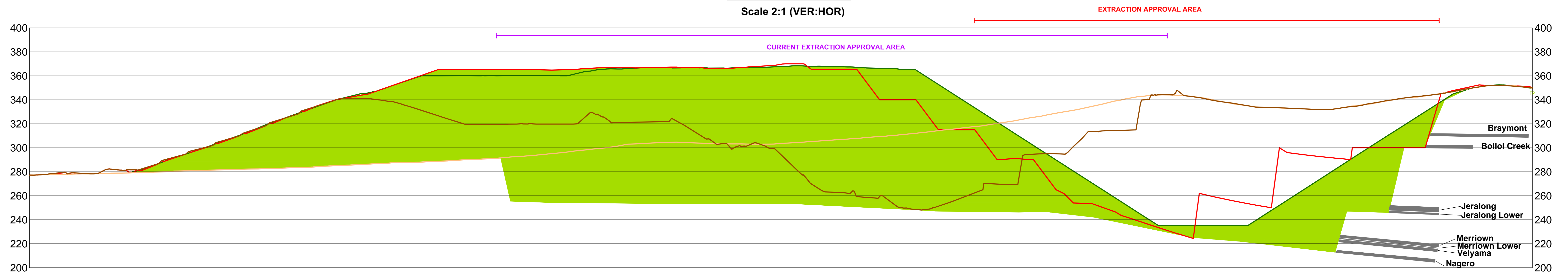
E 228707  
N 6608184








**Section A-A'**  
Scale 2:1 (VER:HOR)

E 226815  
N 6607990

E 229289  
N 6607604



**LEGEND**

-  Existing Surface
-  Conceptual Mining Surface December 2011 (Plan 5)
-  Original Surface
-  Proposed Final Rehabilitation (Plan 6)
-  Overburden Emplacement

I, ....., holder of Open Cut Mine Manager's Certificate of Competency No. ...., certify that the information on this plan is a true indication of the proposed development.

.....  
Manager Date

I, ....., holder of Mine Surveyor's Certificate of Competency No. ...., certify that to the best of my knowledge and belief this plan conforms to the accuracy standards required by Industry and Investment, NSW.

.....  
Mine Surveyor Date

REV.	DATE	BY	DESCRIPTION	CHK.	REV.	DATE	BY	DESCRIPTION	CHK.



**Tarrawonga Coal Pty Limited**  
469 Goonbri Road, Boggabri NSW 2382  
TEL. +61 2 6743 4000

**TARRAWONGA COAL MINE MINING OPERATIONS PLAN**  
**VERTICAL SECTIONS - PLAN 7**

Date: 30-07-2010  
Scale: @ A0  
HORIZONTAL 1:2500  
VERTICAL 1:1250  
Drawn: DS  
Checked:        
Approved:     

Drawing No.  
000000-7

Revision No.  
3

Sheet Size  
A0