



Tarrawonga Community Consultative Committee

Tarrawonga Coal Project - Overview

2 March 2010



WHITEHAVEN COAL

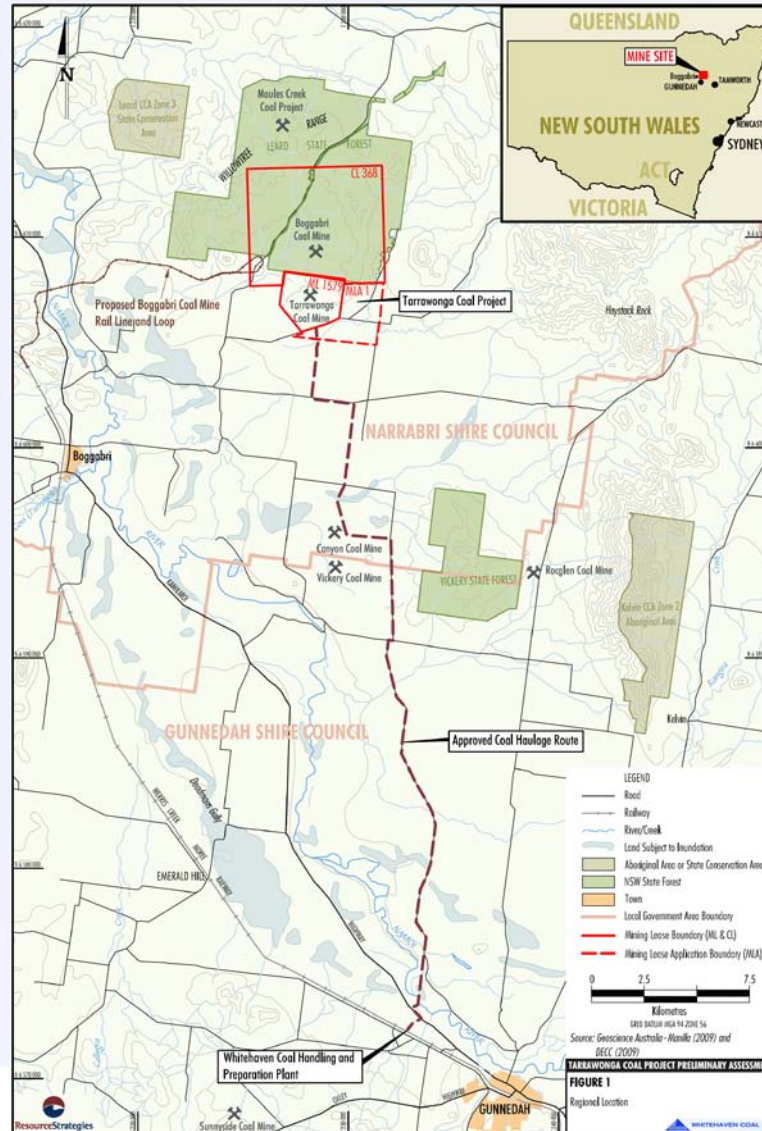
Agenda

- Background – Existing/Approved Tarrawonga Coal Mine
- Project Description
- Environmental Assessment Studies
- Project Consultation
- Project Timeframe

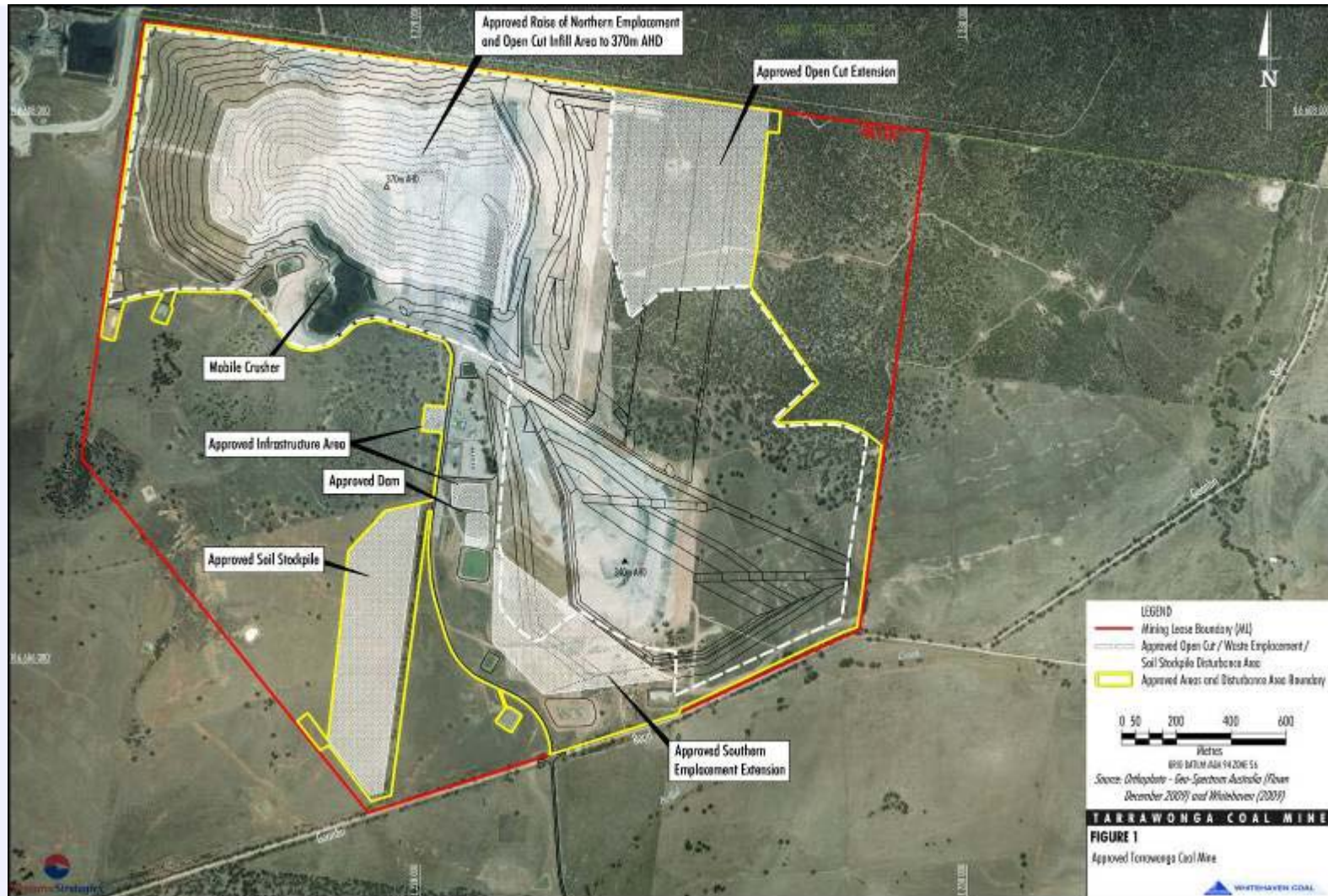
Existing Tarrawonga Coal Mine

- Approximately 70 full time employees.
- Joint Venture between Whitehaven Coal (70%) and Idemitsu Boggabri Coal (30%).
- Approved in November 2005.
- Modified in 2010.
- Approved mine life 8-10 years.
- Max. 2 Mtpa open cut mining.

Existing Tarrawonga Coal Mine



Existing Tarrawonga Coal Mine



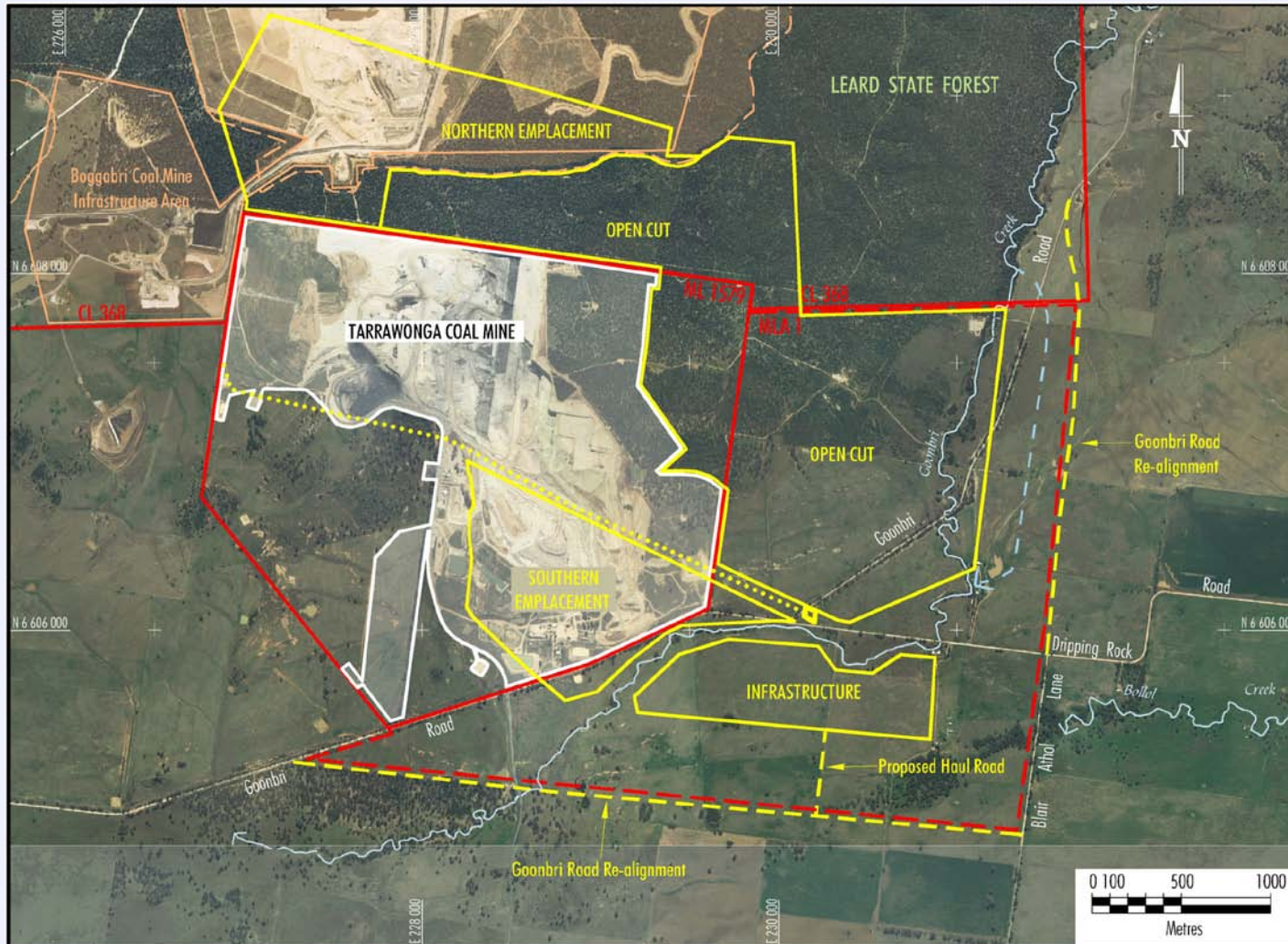
Project Description

- Continued and increased employment:
 - Approx. 120 full time jobs at full development.
 - Approx. 20 temporary construction jobs.
- Extension of open pit to east (1500 m) and north (400 m).
- Approx. additional 40 Mt of coal (life of mine 55 Mt).
- Increase total mine life from 8-10 years to 23 years.

Project Description (Cont.)

- Increased coal production to 3 Mtpa.
- Majority of coal to be transported off-site by road to Gunnedah and/or via conveyor to the Boggabri Coal Mine.
- Mobile crushing and screening plant for domestic coal and gravel production.
- Extension of existing emplacement areas.
- Estimated Project capital cost is \$65 million.

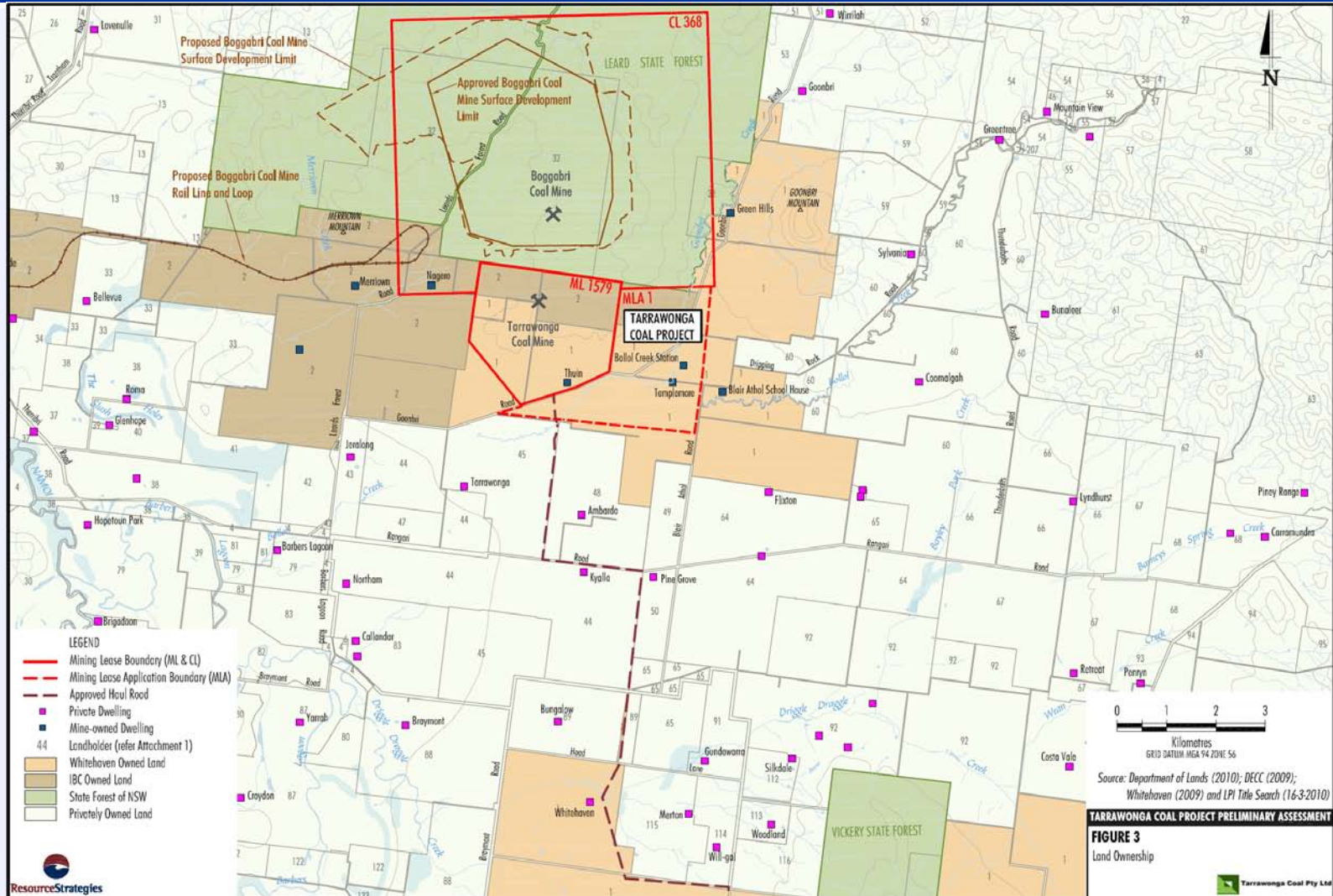
Project Description (Cont.)



Project Description (Cont.)

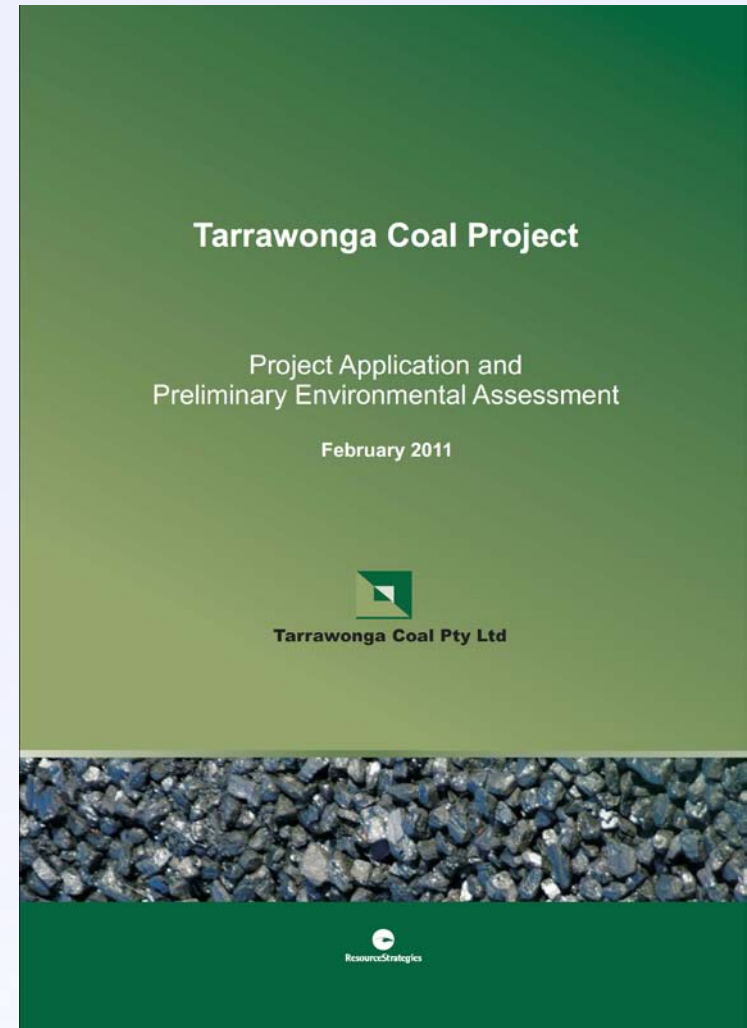
- Several emplacement design concepts considered:
 - Extending Southern Emplacement south east across Goonbri Creek.
 - Extending Southern Emplacement south west onto mostly cleared land within ML 1579.
 - Raising current emplacements above the approved maximum of 370 m.
 - Extending Northern Emplacement north and integrating it with the nearby Boggabri Coal Mine emplacement.
- Economic, agricultural and ecological factors considered in review.
- Consultation with Department of Planning and Idemitsu undertaken.
- Selected emplacement design concept involves infilling the valley located between the Tarrawonga open cut and the planned final emplacement at the Boggabri Coal Mine.

Land Ownership



Environmental Assessment Studies

- Surface Water
- Groundwater
- Terrestrial Flora and Fauna
- Aquatic Ecology
- Noise and Blasting
- Air Quality
- Road Transport
- Aboriginal and Non-Aboriginal Heritage
- Socio-Economic
- Visual
- Waste Geochemistry
- Rehabilitation
- Preliminary Hazard Analysis
- Environmental Risk Assessment



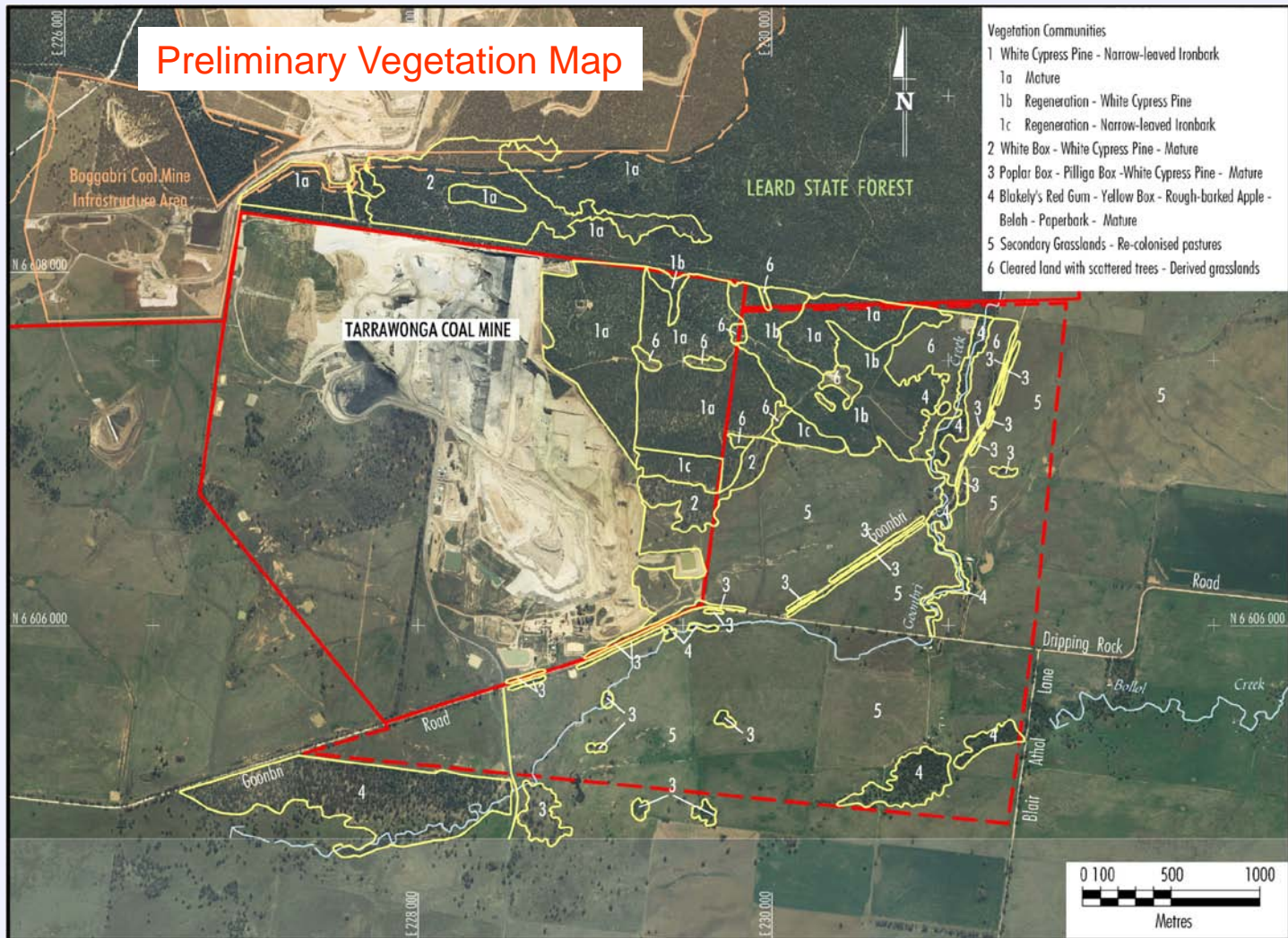
Environmental Assessment Studies

- **Surface Water and Groundwater**
 - Groundwater Assessment.
 - o Dr. Noel Merrick. Heritage Computing
 - Surface Water Assessment.
 - o Mr. Lindsay Gilbert. Gilbert & Associates.
 - Characterise existing surface water and groundwater resources.
 - Assess potential effects of project, including need for Goonbri Creek diversion, effects on local and regional aquifers and registered bores.
 - Cumulative assessment of Boggabri and Maules Creek Projects.
 - Assess need for additional water supply.
 - Consider measures to avoid, minimise, manage and remediate.

Environmental Assessment Studies

- **Flora and Fauna Assessments**
 - Terrestrial Flora
 - o Dr. Colin Bower. FloraSearch
 - Terrestrial Fauna and Aquatic Ecology
 - o Professor. David Goldney. Cenwest Environmental Services
 - Compile baseline information, including results of local and regional studies.
 - Undertake targeted surveys across study area (Flora: December 2010, January-February 2011. Fauna: January and March 2011).
 - Assess potential effects on flora and fauna ecosystems.
 - Cumulative assessment of Boggabri and Maules Creek Projects.
 - Consider measures to avoid, minimise, manage and remediate effects.
 - Develop offsets for unavoidable impacts.

Environmental Assessment Studies



Environmental Assessment Studies

- **Noise, Blasting and Air Quality Assessments**
 - Noise and Blasting Assessment – Wilkinson Murray.
 - Air Quality – PAE Holmes.
 - Identify increased or additional noise/dust sources (e.g. extending open pit and waste emplacement).
 - Undertake predictive modelling of Project.
 - Cumulative assessment of Boggabri and Maules Creek Projects.
 - Additional attenuation measures and monitoring.

Environmental Assessment Studies

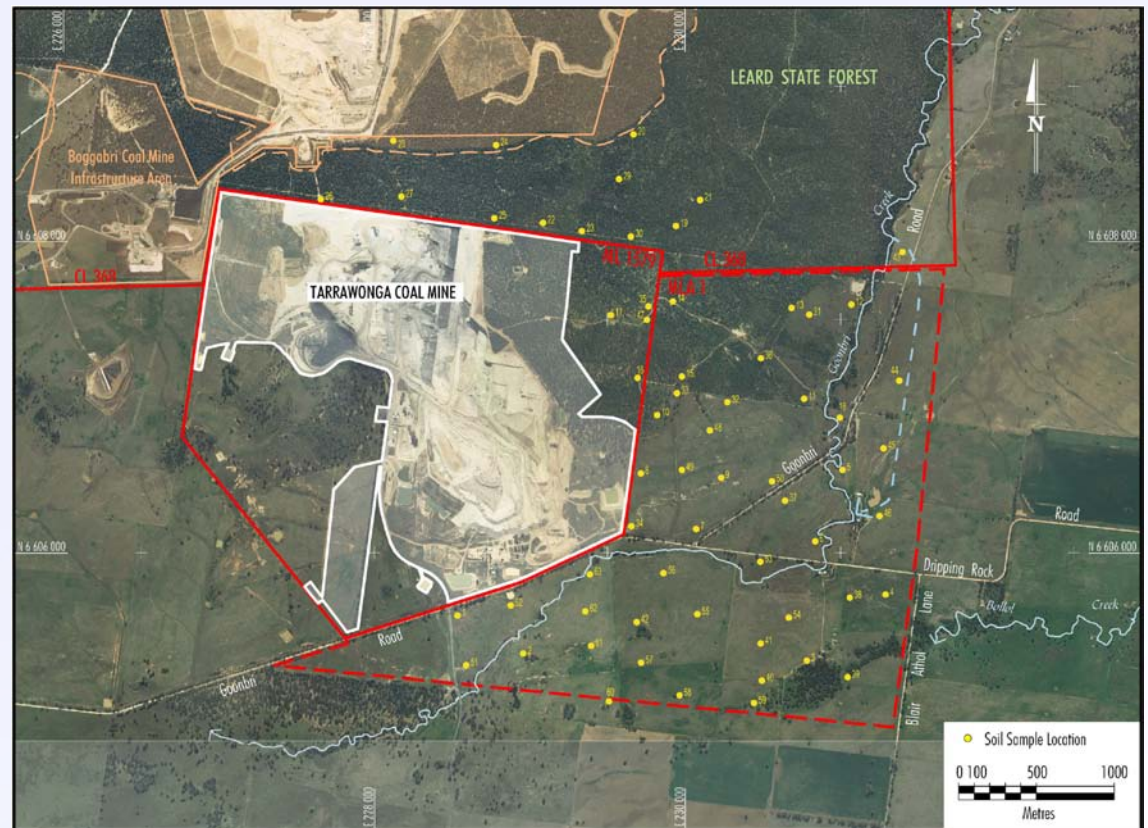
- **Road Transport Assessment**

- Consultation with RTA, local councils and other stakeholders.
- Collate existing traffic data and undertake additional traffic counts.
- Review of road and intersection conditions and capacities.
- Cumulative assessment of Boggabri and Maules Creek Projects.
- Transport assessment by specialist road engineer.

Environmental Assessment Studies

- **Soils, Land Capability/Agricultural Suitability Assessment.**

- Dr. David McKenzie (McKenzie Soil Management Pty Ltd).
- Mapping of soil types.
- Assessment of land capability and agricultural suitability.
- Use for rehabilitation planning.
- Consideration of offsets.



Environmental Assessment Studies



Pit 27: Leard State Forest.

- 63 soil pits locations across study area.
- Pits to 1.5m and 3m at each location.
- Soil samples collected for laboratory analysis.



Pit 63: Agricultural land near Goonbri Creek.

Project Consultation

- WHC to provide newsletters, updates, briefings on key findings of studies prior to finalisation and lodgment of Environmental Assessment (EA).
- Community Meeting during development of the EA and environmental studies.
- Additional CCC meeting(s) prior to EA lodgment.
- Ongoing consultation with regulatory stakeholders throughout EA process.
- All interested stakeholders to be provided with a copy of the finalised EA for review and comment.
- EA comments to be provided to Department of Planning.
- WHC to respond to all EA comments.
- Department of Planning review EA, comments and responses – Minister makes a determination.

Project Timeframe

- Q1 2011 – Lodge Project Application and preliminary environmental assessment (28 February 2011).
- Q4 2010 to Q3 2011 – Undertake baseline studies and prepare Environmental Assessment.
- Q4 2011 – Lodge Environmental Assessment.
- Q3 2012 – Minister for Planning Determination.

THANK YOU