

Narrabri Coal Pty Ltd

ABN: 76 107 813 963

Narrabri Coal Project

Socio-Economic Assessment

Prepared by:
Key Insights Pty Ltd

March, 2007

Specialist Consultant Studies Compendium
Volume 2, Part 9

Narrabri Coal Pty Ltd

ABN: 76 107 813 963

Narrabri Coal Project

Socio-Economic Assessment

Prepared for: R.W. Corkery & Co. Pty. Limited
75 Kite Street
PO Box 80
ORANGE NSW 2800

Tel: (02) 6362 5411
Fax: (02) 6361 3622
Email: mail@rwcorkery.com

On behalf of: Narrabri Coal Pty Ltd
PO Box 2440
Fortitude Valley
BRISBANE QLD 4006

Tel: (07) 3000 5693
Fax: (07) 3000 5699
Email: kross@whitehaven.net.au

Prepared by: Key Insights Pty Ltd
PO Box 210
ISLINGTON NSW 2996

Tel: (02) 4961 6441
Fax: (02) 4961 4996
Email: edm@keyinsights.org

March, 2007

COPYRIGHT

© Key Insights Pty Ltd, 2007

and

© Narrabri Coal Pty Ltd, 2007

All intellectual property and copyright reserved.

Apart from any fair dealing for the purpose of private study, research, criticism or review, as permitted under the Copyright Act, 1968, no part of this report may be reproduced, transmitted, stored in a retrieval system or adapted in any form or by any means (electronic, mechanical, photocopying, recording or otherwise) without written permission. Enquiries should be addressed to Key Insights Pty Ltd.

CONTENTS

	Page
EXECUTIVE SUMMARY	9-5
1. INTRODUCTION	9-9
1.1 Outline.....	9-9
1.2 Scope.....	9-9
1.2.1 Report Objectives	9-9
1.2.2 Report Format.....	9-9
2. DESCRIPTION OF THE PROJECT	9-11
3. LITERATURE REVIEW: PREVIOUS SOCIAL ASSESSMENTS	9-12
3.1 Introduction	9-12
3.2 Boggabri Coal Project: “Analysis of Social and Economic Aspects- Gunnedah, Boggabri, Narrabri District”, 1982.....	9-13
3.2.1 Scope	9-13
3.2.2 Population and Employment	9-13
3.2.3 The Region’s Economy.....	9-13
3.2.4 Community Services and Recreation	9-14
3.2.5 Housing Stock, Vacant and Rental Housing and Residential Land.....	9-14
3.2.6 Multiplier Effects	9-15
3.3 “Whitehaven” Coal Mine Proposal, March 2000	9-15
3.4 East Boggabri Joint Venture: Socio Economic Assessment of the Proposed Mine Site, May 2005.....	9-16
3.4.1 Scope	9-16
3.4.2 Demographic and Community Profile.....	9-16
3.4.3 Qualitative Research.....	9-17
3.4.4 Potential Impacts	9-17
3.4.5 Recommendations.....	9-18
4. SERVICES AND FACILITIES	9-18
4.1 General Facilities.....	9-18
4.2 Educational Facilities and Childcare	9-23
4.3 Healthcare Facilities	9-24
4.4 Local Capacity: Demand and Supply.....	9-26
5. COMMUNITY CONSULTATION	9-29
6. QUALITATIVE RESEARCH.....	9-30
7. OPPORTUNITY FOR COMMUNITY CONTRIBUTIONS.....	9-31
7.1 Introduction	9-31
7.2 Opportunities.....	9-31
7.2.1 Partnership with Narrabri TAFE	9-31
7.2.2 Cooperation and open communication with Narrabri Council.....	9-32
7.2.3 Contribution to Town Facilities	9-32
7.3 Constraints.....	9-33
8. CONCLUSIONS	9-33
9. REFERENCES	9-36

CONTENTS

Page

APPENDICES

Appendix 1	2006 TAFE Courses offered in Narrabri.....	9-39
Appendix 2	TAFE Proposal for a National Innovation Centre.....	9-49
Appendix 3	Key Community Stakeholder Telephone Interviews	9-55
Appendix 4	“An Introduction to the Narrabri Coal Project” Community Newsletter	9-69
Appendix 5	Surrounding Landowner Consultation Log – Narrabri Coal Project	9-77
Appendix 6	Coverage of Environmental Assessment Requirements and Environmental Issues in the Socio-Economic Assessment	9-83

FIGURES

Figure 1	Project Site Location	9-10
----------	-----------------------------	------

EXECUTIVE SUMMARY

The Narrabri Coal Project (“the project”) has been separated into two stages, with Stage 1 targeting the resource to be mined by continuous miner and Stage 2 targeting the resource to be mined through potential longwall mining. This report examines the socio-economic impacts associated with Stage 1 of the project. This has been done through analysis of previous social and economic assessments in the region, research into available local services and facilities, research into housing and land availability and exploration of education and training strength through qualitative research with key community stakeholders.

Literature Review

The three previous Social Assessments (from the Boggabri Coal Project, the Whitehaven Coal Mine Proposal and the East Boggabri Joint Venture) yielded some common themes. It was noted that the Narrabri/Gunnedah regions had been experiencing declining populations over recent decades. There had been net out-migration from rural areas, especially as a result of young people moving to regional centres in search of further work and educational opportunities.

Wide community support for mining in the area was a theme that emerged from the assessments. Residents apparently welcomed the economic and employment benefits that would flow through to the areas as a result of expanded mining activity. The communities saw mining as a positive way to bring population growth and much needed diversity to the local economy. The reports themselves also document the flow-on economic benefits to the area that would result from an expansion in mining activity.

The issue of housing supply was raised in the reports. Separate houses are the overwhelmingly dominant form of housing in the area. While there is land that would accommodate population increase in both Narrabri and Gunnedah, an influx of new workers may provide short-term stress on the market.

The reports portray the Narrabri and Gunnedah economies as being chiefly driven by agriculture. Subsequently, the labour market and skills pool is not particularly deep. The labour market is quite tight in the areas of professionals and skilled trades. These structural conditions of the labour market may mean that it is necessary to import a considerable proportion of the workforce, notably those with highly developed, mining related skills. There may also be a transfer of workers from the agriculture sector to the better paid mining sector. However, high levels of youth unemployment suggest a considerable pool of young workers, who would be available to engage in low-skill jobs or participate in structured training.

Qualitative Research

The qualitative research for this report has been shaped by the trends identified in the literature review. With housing, employment and education the consistent themes over the last 20 years this research concentrates on gathering input from professionals working in those areas.

Narrabri and Gunnedah were identified as the towns that most mine workers would be inclined to live in. Although Narrabri is further away from the mine site than Baan Baa, it has a higher level of services than the villages of Boggabri and Baan Baa. The people who participated in the interviews felt that most miners would be willing to make the longer drive to work in exchange for the convenience that is offered in the larger centre of Narrabri. Respondents also highlighted the quality and quantity of local services and facilities as an attractor of new workers to the area.

Interviews with local educators highlighted the quality and capacity of the local school education systems in both Gunnedah and Narrabri. The local school at Baan Baa was closed at the end of 2005 with the remaining students now travelling to Boggabri. This situation was to be under review for 18 months from the time of closure with the potential to re-open the school if the population increases within that time.

Real estate agents from the Narrabri Shire area confirmed the findings of the social assessments analysed. They described a reasonably static, although shallow, housing market. They believed that a population increase associated with the opening of a new mine would cause a short term shock, but that there was enough developable land to meet demand in the medium term. They also identified a cohort of entrepreneurs ready to build housing in anticipation of new mining ventures. It was the general view that new settlement would be limited in Baan Baa because of the lack of a town water supply.

Interviews with Narrabri Shire Council officers revealed an optimistic outlook for a healthy, well serviced community. Issues such as housing supply and unemployment were highlighted, but there was an understanding that these issues could be addressed.

Narrabri TAFE, part of the New England Institute, is at the forefront of innovation in manufacturing and engineering-related trade courses. There is an excellent opportunity for any new mines to joint venture a range of training and business development programs with TAFE that would enhance local skills growth and sustainable employment development.

Conclusions

It is estimated that employment generation associated with the project would lead to a moderate population increase, chiefly impacting the township of Narrabri. Social Infrastructure and community facilities will be able to cope with increased demand on services. Further, population growth will contribute to the vitality and sustainability of various community groups and facilities.

The key areas evident throughout this research that raise capacity issues as a result of this project, and the cumulative impact of other mining in the area, are:

- **Education & Training Capacity**
 - For mining personnel
 - To support local employment
 - For the families of miners (children, teenagers and partners)

- **Housing Capacity**
 - To support population growth
 - Local government support through LEPs and zoning.

- **Economic Development and Employment Capacity**
 - Ability to attract local supply industries
 - Ability to staff and train local workers in the supply industries
 - Career pathways, particularly for young locals
 - Local government support through zoning and development programs

In view of the range of available services and particularly the courses and expertise offered by the local TAFEs, combined with the positive attitude of the local Councils, the region should be confident that it currently has, or will quickly develop, capacity in the three main areas highlighted above to meet the demands of a potentially rapidly growing population of mine workers and related trades.

In addition to opportunities in education and training, population growth will also increase the numbers of local people available to work for service and sporting organisations and generally enhance the viability of local voluntary groups. The range of clubs, service organisations, facilities and government services available in Narrabri and Gunnedah Shires indicate a well serviced community with high levels of social capital. It is a strong community that will be strengthened further by new workers coming to the area and hopefully by a higher retention rate of its young people.

This report finds that the development of the Narrabri Coal Project (Stage 1) will deliver the following positive social impacts.

- Reduction of social stress through provision of local jobs and enhanced economic well being.
- Training opportunities for local people, including young people and indigenous people, in a growth industry (mining).
- Contribution to the diversity of the economic base in Narrabri and Gunnedah Shires therefore enhancing the sustainability of rural communities within the Shire.
- Stimulus to local businesses, particularly in Narrabri, including motel and hotel trade, cafes and restaurants, mining related engineering and surplus spending activity such as gyms, cinema, recreational goods and services, beauty salons, and hair dressers.
- Increased population to participate in locals clubs, sporting groups, cultural activities, and organisations, therefore contributing to stronger social networks and social capital.
- More volunteers for community service organisations.

In terms of **social constraints**, very few were identified throughout this research. Careful attention should be given to the following.

- Minimising the negative effects of noise associated with additional coal trains travelling through Baan Baa.
- Minimising and managing environmental impacts, particularly on near neighbours (note that an ongoing consultation strategy is currently being undertaken with near neighbours by the Proponent and a community newsletter appears at **Appendix 4**).

There have been **opportunities** identified for the Proponent to contribute to the local community at a number of levels. Given the importance of skill training, a strategic partnership with one of TAFE's innovative programs could be of mutual benefit to the community and to the Proponent. Preliminary suggestions that seem to have the most resonance with those interviewed were:

- partnering with Narrabri TAFE to ensure courses being offered are appropriate for the needs of the mine;
- contribution to the TAFE Business Incubator (high-tech manufacturing/engineering related);
- contribution to the TAFE Innovation Centre (encouraging inventors and manufacturing from around Australia); and
- partnering with Narrabri Council in order to promote business in the region, particularly to businesses that may supply the proposed coal mine.

1. INTRODUCTION

1.1 Outline

This socio-economic assessment has been prepared by Key Insights Pty Limited. The report analyses the social and economic characteristics of the Narrabri and Gunnedah Shire communities and assesses the likely socio-economic impacts arising from the proposed Narrabri Coal Project and the community's capability and capacity to cope with the impacts.

The location of the proposed underground workings and surface facilities of the project ("the Project Site") is located on the Kamilaroi Highway between the towns of Baan Baa and Narrabri. **Figure 1** presents the location of the Project Site, and its relationship to the nearby centres of Gunnedah and Narrabri and the townships of Baan Baa and Boggabri.

1.2 Scope

1.2.1 Report Objectives

The objective of this report is to assess the socio-economic impacts associated with the project, primarily the impacts of population growth upon housing, employment and demand for services. Identification and analysis of these impacts will lead to a series of opportunities being identified for the consideration of the Proponent.

The primary objective of the report is achieved through the analysis of previous social and socio-economic assessments undertaken for mining projects in the area, assessment of service demand and supply in Narrabri and Gunnedah Shires and qualitative research undertaken by Key Insights. This qualitative research consists of interviews with stakeholders from the relevant Local Council, local government agencies and key representatives of the wider community.

1.2.2 Report Format

The format of the report is as follows.

	Executive Summary
1	Introduction
2	Description of the Project
3	Literature Review of Previous Socio-economic Assessments
4	Existing Services and Facilities
5	Community Consultation
6	Qualitative Research
7	Opportunities for Community Contributions
8	Conclusions

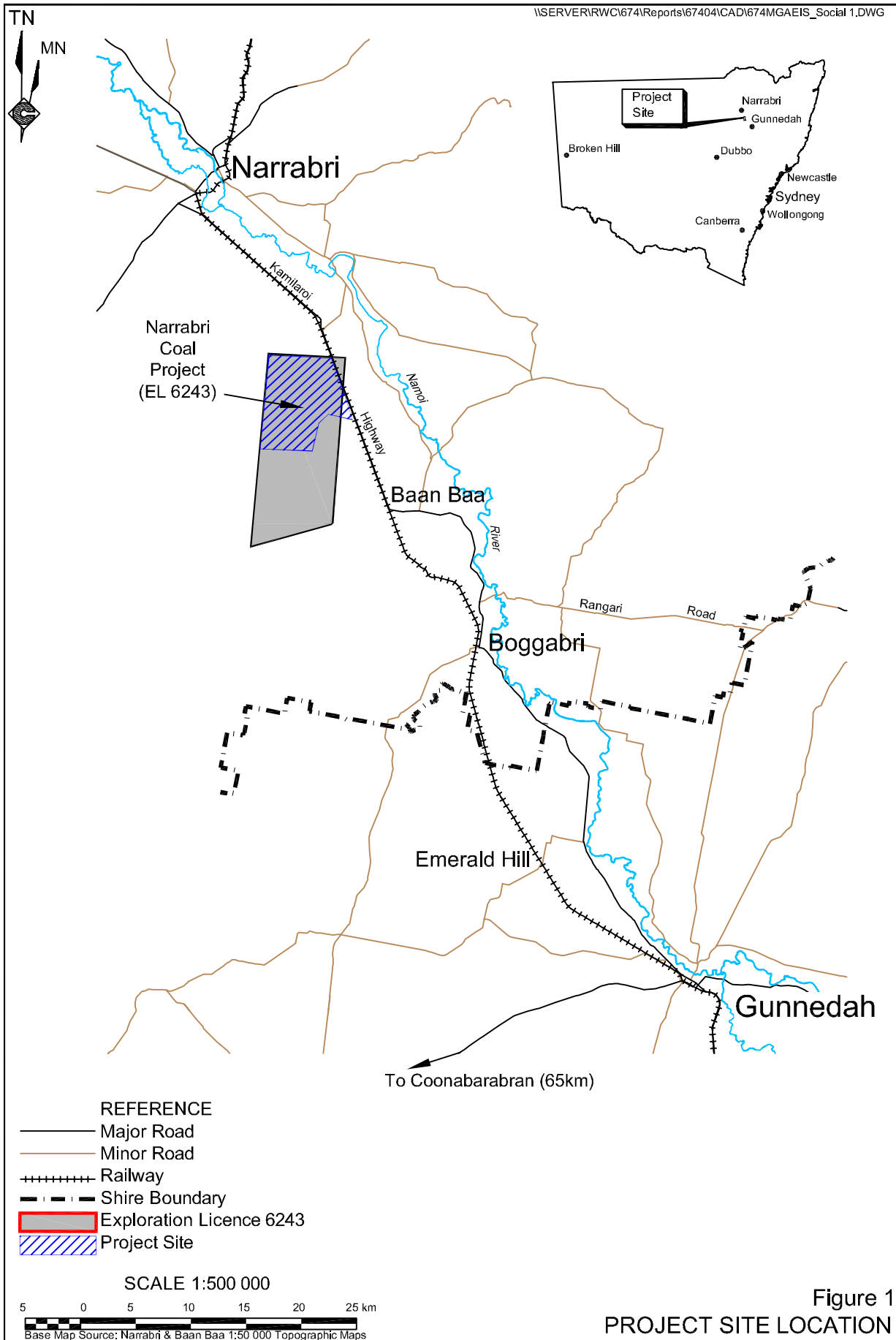


Figure 1
PROJECT SITE LOCATION

Note: A colour version of this figure is included on the CD for the Narrabri Coal Project

2. DESCRIPTION OF THE PROJECT

The Narrabri Coal Project has been designed in two stages. Stage 1 is to consist of continuous miner operations, involving the following activities.

- Site Establishment
 - Establishment of a Pit Top Area incorporating surface infrastructure related to offices, workshops, amenities, crushing / sizing, stockpiling and train loading.
 - Construction of a transport drift and a conveyor drift to provide access to the Pit Bottom Area.
 - Establishment of the pit bottom area.
 - Establishment of a vertical ventilation shaft.
 - Construction of four evaporation ponds to store groundwater dewatered from the underground workings.
- Operations
 - Mining of coal from the Hoskissons Coal Seam using underground continuous miner methods in Mining Areas A, B and C at a maximum rate of 2.5Mtpa.
 - Transportation of the mined coal to the ROM stockpile via a conveyor system.
 - Crushing and sizing of the ROM coal through the crushing / sizing plant and stockpiling on the product stockpile.
 - Loading of product coal into train wagons via the rail load-out bin for transportation to the Port of Newcastle.

During the operation of Stage 1 of the project, the Proponent intends to evaluate the feasibility of converting the continuous miner operation with an annual production of 2.5Mtpa to a longwall mining operation with an annual production of approximately 6Mtpa. The longwall mining operation would effectively be Stage 2 of the Narrabri Coal Project. In reality, this evaluation is likely to take at least 3 years from the commencement of Stage 1 and would require the preparation of a separate environmental assessment.

As the Project Site is located within the Narrabri Local Government Area, the potential socio-economic effects are expected to relate principally to the town of Narrabri, and to a lesser extent, the nearby villages of Baan Baa and Boggabri and the town of Gunnedah.

The bulk of the social impacts associated with the project would be as a result of new employment created by the mine, and through the secondary effects of supplying these workers and their families, and the mine itself, with goods and services as well as the contributions these families will make to community life.

Employment levels for the project are anticipated to be as follows for the site establishment and operations phases of the project.

Site Establishment

Construction of the Site Access Road and intersection with the Kamilaroi Highway, Pit Top Area infrastructure, drift development and establishment of the stockpiling areas and crushing / sizing plant would be undertaken prior to the mining and crushing / sizing of any coal. An estimated workforce of up to 80 full-time equivalent persons would be employed during the site establishment period.

Operations

The mining workforce would be employed directly by the Proponent, with some specialist services contracted. A total of 94 persons would be employed by the Proponent based upon two continuous miners operating. In the event a third continuous miner is introduced, total employment would rise to approximately 113 persons.

A number of technical, professional and mine support service personnel would also be expected to visit the mine site on an “as needs” basis including cleaners, rubbish removal contractors, specialist tradespersons and sales representatives, environmental, mine planning and geotechnical consultants, as well as the Proponent’s senior management personnel.

The operational mine workforce would comprise a core workforce with experience in coal mining or related industries supplemented by suitable local persons. In order to ensure sufficient numbers of qualified and trained local personnel are available for employment at commencement of Stage 1, the Proponent intends to initially utilise existing employees with relevant mining experience to initiate operations and assist in the training of other employees. The Proponent would, however, support employment of local district personnel, with arrangements for training and certification put in place to ensure suitable applicants can acquire the necessary skills. The local indigenous community would be encouraged to be involved in this program.

While the Proponent would implement a training and employment program for suitably qualified local applicants, experienced mine workers from the Hunter region would be sourced as those mines close. The number of relocating mine workers from the Hunter region is not, however, anticipated to make up a major proportion of the workforce.

3. LITERATURE REVIEW: PREVIOUS SOCIAL ASSESSMENTS

3.1 Introduction

There have been numerous reports compiled in recent years addressing the social impacts of various mining proposals. The following review highlights the pertinent points from three of these reports undertaken on mining projects in the Narrabri-Gunnedah area.

3.2 Boggabri Coal Project: “Analysis of Social and Economic Aspects- Gunnedah, Boggabri, Narrabri District”, 1982.

3.2.1 Scope

In February 1982, Nexus Environmental Studies undertook the socio-economic study as a component of the Environmental Impact Statement for the AMAX BHP Boggabri Coal Project. The study examined Boggabri, Narrabri and Gunnedah across a range of topics including population demographics, the region’s economy, community facilities, housing/rental/land supply and input/output multipliers. The study provides detailed information on each topic, but does not draw any conclusions or put forward any recommendations.

3.2.2 Population and Employment

Even in the early 80s substantial portions of the Gunnedah/Narrabri region were experiencing population decline. Over the decade from 1971-1981, across the region, there had been a growth rate of just 0.6% per year. This growth occurred mainly in the Gunnedah and Narrabri townships, with most outlying towns experiencing out-migration.

The study notes a reasonable degree of distribution across different industries of employment. This diversity of employment gives the economy some resilience in the event of failure of one industry.

The region exhibited only slow creation of full-time jobs. Additionally, many job opportunities are seasonal, relating to the harvesting seasons of the area’s extensive agricultural industry. Many of these jobs are unskilled and low-paid. The agriculture industry is highly sensitive to drought conditions. The flow-on effect of this is that a poor season can mean hardship for workers relying on casual farm jobs.

The study revealed a tight labour market in terms of skilled work. It was suggested that there was already full employment of professionals and skilled workers. Advertising in Sydney papers for skilled labour had become the norm, due to the lack of skilled workers in the region. Unemployment in the region was affecting young and unskilled workers. The study notes the need for youth employment training programs in areas such as machinery operation, irrigation and farming skills.

The report acknowledges that the employment impact of the proposed mine would depend upon the mix of skilled, semi-skilled and unskilled workers required. The report identifies an adequate pool of local unskilled labour, but a need to import semi-skilled and skilled labour in the short term. Training schemes may lead to a progressive upgrade of the availability of more highly skilled workers.

3.2.3 The Region’s Economy

The report makes the expected observation that agriculture provides the driving force behind the region’s economy. Town based retail and service industries service the population centres and outlying properties. The study notes that the building and engineering industries are on a

smaller scale and currently operate at or near capacity. Any rapid increase in building activity or mine related engineering would be beyond the current capacity of these industries. Mining activity in the region was, at the time of the report, centred upon the Gunnedah area; employment and economic benefits flowed to Gunnedah and not Narrabri.

3.2.4 Community Services and Recreation

The report provides an extensive list of health, education, recreational and community services in the districts. While Gunnedah and Narrabri appear to have a reasonable level of service provision the following shortfalls are acknowledged:

Narrabri:

- Shortage of non-sporting activities for teenagers
- Social activities for youths could be improved
- Concern was expressed over the “unsettling effect” on communities due to the shifting seasonal work population, and alcohol problems associated with this group

Gunnedah

- There is a need for more accommodation for the aged
- Shortage of employment and recreational opportunities for those aged 18-25 years
- Shortage of non-sporting activities for teenagers
- Social activities for youths could be improved

Boggabri

- “Considerable expansion of community facilities will be required for any substantial population increase.”

3.2.5 Housing Stock, Vacant and Rental Housing and Residential Land

These chapters identify the general theme of a limited capacity for housing growth associated with population growth as a result of a new mine. Figures detailing the availability of vacant houses reveal only a limited supply in Narrabri, Gunnedah and Boggabri townships.

Boggabri, Gunnedah and Narrabri were all experiencing a tight rental market at the time of the study. Across each area there had also been a recent surge in the real estate market, putting upward pressure on the cost of housing.

The report also analyses the availability of residential land. Across Narrabri and Gunnedah, there is very little land available for infilling of the existing towns, necessitating new releases on the fringes. In Gunnedah and Narrabri, the main barrier to this was the cost of servicing new blocks, while in Narrabri the major constraint was flood prone lands. At the time of the report, Boggabri was identified as having considerable scope for infill development.

3.2.6 Multiplier Effects

The report uses input/output multipliers from a study of the Hunter Region in an attempt to estimate the flow-on effects from increased economic activity associated with a new mine. The estimates suggest that for every 100 coal mine jobs there will be a further 40-60 jobs employed providing equipment and services to the mine, and a further 90 or so employed providing services of all kinds to them. In the case of construction jobs as a result of population increase, between 40 and 80 jobs will be created providing equipment and services to the construction industry. A further 90 or so jobs will be created providing all types of services to them.

3.3 “Whitehaven” Coal Mine Proposal, March 2000

Key Insights was furnished with relevant sections from the Environmental Impact Statement for the Whitehaven Coal Mine Proposal. Sections one and four contain information relevant to the social impacts of the proposal.

Section 1.9 outlines the consultation undertaken during the preparation of the Environmental Impact Statement. In addition to representatives from a range of government departments, community members from within close proximity to the site were consulted. During these consultations, the nature of the proposal was conveyed, issues of concern were ascertained and discussed and the satisfaction, or otherwise, of residents with the mine’s activities during the trial mining exercise was determined.

Although a number of issues were identified by residents, they were supportive overall of the proposal and recognised its potential to generate local employment. The issues identified by residents included the behaviour of truck drivers, road safety, dust and the potential damage to houses from blasting.

Section 4.10 outlines the social and economic setting of the proposal. It identifies a number of potential positive and potential negatives for the proposal. The positive impacts included the following.

- The project will lead to increased employment for the area. The report predicts that 24 site based jobs, 8 fulltime-equivalent and 44 contractor jobs will be created. Some of these jobs would be sourced from the Narrabri / Gunnedah / Boggabri areas, potentially relieving unemployment of mining workers in the area. An estimated \$45,000 would be spent on wages per week. A considerable proportion of this money would be spent locally.
- There will be positive flow-on effects to the local community and businesses. It is noted that the community has been in a state of decline in recent years.

- Improved standards of some roads, notably Hoads Lane and Quia Road.
- Financial contribution to local, state and national economies.

Some potential negative effects were identified.

- The study notes that the proposal would lead to the loss of up to 288Ha of agricultural land for farming purposes, for a period of up to 9 years. However, this agricultural land is used predominantly only for grazing or rotational cropping.
- There may be a short-term perception that property values may decrease. The report explains that such views are unfounded, citing the relatively small effects from noise, dust and other impacts, which are balanced by the positive impacts such as improved roads.
- The impact of heavy vehicles on the local road system is noted. The negative impacts, however, would be ameliorated through maintenance agreements between the Company and the local Council. The company's transport policy would ensure that the effects on local residents of dust and coal dislodgement would be minimal.

Section 4.13.5 of the EIS outlines ongoing consultation strategies to be employed by the Company. These included the proposal that neighbours regularly be invited to the mine to review the performance of the operation. The Company has also established, and intends to maintain, a complaints/comments register. The register would keep track of comments and complaints from the public and the responses and actions initiated in response to them.

3.4 East Boggabri Joint Venture: Socio Economic Assessment of the Proposed Mine Site, May 2005

3.4.1 Scope

In May 2005, Key Insights Pty Ltd and Castlecrest Consulting undertook a social and economic assessment of the then proposed East Boggabri Coal Mine (now, approved and operational as the Tarrawonga Coal Mine). The report assesses the social and economic characteristics of the Narrabri, Boggabri and Gunnedah communities. It assesses the impacts likely to arise from the proposed East Boggabri mine. It also assesses the community's capacity and capability to cope with these impacts.

3.4.2 Demographic and Community Profile

The report identifies that the areas within the locality have been in decline for the past 20 years. The Local Government Areas (LGAs) of Gunnedah and Narrabri have sought to correct this by actively seeking new businesses and services. The report recognises the potential for the East Boggabri Coal Mine to provide an economic driver, and support for the regional areas around Boggabri, Narrabri and Gunnedah.

The demographic profile reveals characteristics typical of a NSW regional area. There is a high proportion of children, and of elderly residents. An out-migration of young people in the “transition to work” years occurs in the area, which is typical for NSW regional areas. This is the result of young people leaving the area in search of greater educational and employment opportunities available only in the major centres and coastal cities.

The census reveals that the main form of housing in Narrabri and Gunnedah is separate houses. Although this is the case across the state, the trend is more pronounced in the areas in question. Access to other forms of housing, for example attached housing or units, is very limited. At the time of the report, there had recently been a period where housing demand had outstripped supply, witnessed anecdotally by a tightening of the rental and purchase markets within many townships.

3.4.3 Qualitative Research

Qualitative research conducted for the report took the form of interviews with key stakeholders from Boggabri, Narrabri and Gunnedah. A town meeting in Boggabri, attended by approximately 160 people, was also documented in this section.

There were a number of trends emerging from the qualitative research. Generally, there was a strong level of support for the proposal. Respondents exhibited an understanding that the economic and social flow-on effects from any mining development were likely to be positive for the area. It was noted that the increase in population as a result of the mine would lead toward a critical mass for services and facilities.

The research indicated that educational characteristics of the area, as well as the nature of the pool of unemployed means that the area could supply a significant labour resource for the mine, and other mining projects in the region.

Research revealed that there was a strong perception that if the East Boggabri Coal Mine were to proceed, the result would be some short term stress on the local housing and labour markets.

3.4.4 Potential Impacts

The study noted a number of positive social and economic impacts including:

- reduction to social stress through provision of local jobs;
- training opportunities for young people;
- contribute to the diversity of the economic base in the subregion;
- increased population to assist in underwriting stronger local social networks and the development of social capital; and
- stimulus to business, particularly the services sector.

A small number of negative impacts were identified, including:

- reduction in peaceful rural amenity due to coal product transport trucks; and
- short term housing stress before the market responds to new demand

3.4.5 Recommendations

The report outlines a number of recommendations to ensure optimal social outcomes for the project. These included the following.

- That the Community Consultative Committee formed for the proposal be supported and consulted, thereby keeping the community informed and providing an effective communication channel.
- That job opportunities for partners of mine workers be promoted, potentially finding workers in the medical and allied health industries for the region. It was also recommended that an induction kit be provided for workers who are new to the area, providing contact details and information about community organisations and services in the region.
- The need for short term worker accommodation is acknowledged. This may only need to occur in the initial stages.
- That Government bodies at local and state levels are kept informed, allowing them to institute effective plans and service provision for the area.
- The report recommends that the Mine adheres to its declared policy of using skilled staff at the outset with a view to training and developing local people throughout the life of the mine.

4. SERVICES AND FACILITIES

Local people interviewed as part of the qualitative research of this report (see Section 6) indicated that the area has the capacity in terms of services and facilities to cater for the influx of population that the new mine would bring. Generally it was felt that people would access services in Narrabri and Boggabri, but also the facilities and services available in Gunnedah would support population growth in the regional area. An overview of services and facilities is provided below.

4.1 General Facilities

Narrabri Shire

Narrabri Shire has many services and facilities to meet the needs of mine workers. These are predominantly centered in the Narrabri township, though a range of services and facilities are also available in towns such as Boggabri and Wee Waa. Narrabri prides itself on being

“Australia’s sportiest shire”. Sporting clubs form an important part of recreational pursuits in the shire.

Three public libraries operate across the shire, in Narrabri, Boggabri and Wee Waa. These facilities include access to printing and internet.

Narrabri’s recently renovated cultural centre, the “Crossings Theatre” is a \$6 million development that now houses twin cinemas, large auditorium/conference room and a large exhibition room. The Narrabri Shire’s art collection is housed there. The centre operates 5 days a week (closed Monday and Tuesday) and is open 7 days a week during the school holidays.



The Crossings Theatre

The following businesses and services operate in Narrabri.

- 2 supermarkets plus a new Woolworths “super store”
- 8 Pubs and 3 licensed clubs
- Rugby, squash, tennis and netball courts
- Gardens and sporting ovals
- 8 hole golf course
- 2 Chemists
- Police Station, Ambulance, Fire Brigade
- Mechanics
- Dentist
- Optometrist
- Doctors
- Restaurants
- McDonalds franchise
- Kentucky Fried Chicken franchise
- Eagle Boys Pizza franchise
- Sports store
- Real estate agents

Gunnedah Shire

Although workers from the proposed mine will most likely live and work in the Narrabri Shire, economic benefits from the project will affect both shires due to the vicinity of Gunnedah (approximately 68km). As such, a brief overview of Gunnedah and its social infrastructure is provided.

Gunnedah residents also engage in sport and sporting clubs as a common recreational activity. There is a great variety of established sports and sporting facilities provided by over 50 sporting clubs. These clubs include:

Aero Club	Physical Culture Club	Touch Football Club
Amateur Athletics Club	Picnic Race Club	Volleyball Club
Amateur Fishing Club	Pistol Club	Water Polo Club
Australian Rules Club	Police Youth Club	Women's Bowling Club
Baseball Club	Polo Club	Little Athletics Club
Basketball Club	Pony Club	Men's Bowling Club
BMX Club	R.S.L. Men's Bowling Club	Motor Cycle Club
Bowhunters Club	R.S.L. Women's Bowling Club	Netball Club
Bushwalking Club	Rifle Club	Paintball
Coursing Club	Rugby League Club	Junior Tennis Club
Cricket Club	Rugby Union Club	Tennis Club
Cycling Club	Runner's Club	Tent Peggers & Polocrosse Club
Go Cart Club	Small Bore Rifle Club	Tae Kwon Do Club
Golf Club	Soaring Club	Junior Rugby League Club
Gun Club	Soccer Club	Junior Soccer Club
Gymnastics Club	Softball Club	Junior Cricket Club
Hockey Club	Speedway Club	Swimming Club
Indoor Cricket Club	Sporting Shooters Club	
Jockey Club	Squash Club	

Gunnedah has many sporting facilities suitable for major sporting events on a regional, state, national or even international scale. These include:

- The R.S.L. Tennis Club courts
- The Lyle Griffith Gymnasium
- Blue Vale Motor Speedway
- Balgary Race Track, Go-Carts and Motocross
- Gunnedah Memorial Pool
- Gunnedah Indoor Heated Pool
- A total of 7 playing fields; Football, Soccer, Baseball etc
- Netball Courts

- Skate park
- Gunnedah Show Ground, which has rodeo soft-fall arena, paceway track
- Dressage and tent pegging arena, which can be illuminated
- BMX Bike Track
- Fitness Factory, Squash Courts
- Gunnedah Servicemen's Club Squash Courts
- Police Boys Club, Basketball and Gymnasium
- Indoor Cricket Centre
- Indoor Basketball Stadium
- Gunnedah Golf Club
- Greyhound Race Track
- Gunnedah Racecourse
- Paintball

The Gunnedah Cultural Centre is the focal point for activity of a cultural nature within the town of Gunnedah. It includes the Civic theatre, which houses new cinema/theatre facilities. Also included are the original town hall and the creative arts centre. The creative arts centre displays the shire's art collection. Music tuition is available from private teachers and from a branch of the NSW Conservatorium of Music while the Gunnedah Eisteddfod is one of the biggest in country NSW. The Dorothea Mackellar Poetry Competition for young people attracts international entries and is the biggest of its kind in the world. More than 200 special interest and leisure groups including sporting organisations cater for many types of indoor and outdoor recreational interests.

Gunnedah also boasts a swimming centre which includes a 50m Olympic pool, 25m indoor heated pool, children's wading pool, kiosk and BBQ facilities.

From a commercial and retail viewpoint, Gunnedah is self sufficient with residents having little need to travel to larger centres for goods and services. In 1996 there were over 150 retail establishments with a turnover being around \$80 to \$100 million. A wide variety of businesses includes supermarkets, pharmacies, banks, printers, bakers, drycleaners, fashion clothing and gift shops as well as real estate, stock and station agents, travel agents, motor dealerships and machinery service centres. The four major banks, the St George bank, one building society and two credit unions have branches in Gunnedah and offer all usual banking and credit facilities.

Most of the commercial activity in the town is concentrated in two or three blocks either side of Conadilly Street and offers professional and retail services to the community both within and outside the Shire.

Professional services in the town include four medical, three dental and two veterinary practices. Also included are accountants, agricultural consultants, a pathologist, solicitors and surveyors plus several ancillary services including pathology, physiotherapy, and chiropractic and podiatry practitioners.¹

Gunnedah brands itself as the “Koala Capital of the World” and is trying to develop its tourism infrastructure. There is also a golf course. The people’s markets operate once a month and there is DA approval for a new BiLo behind the main street. This development is well advanced and there is potential for redevelopment in the area involving a third supermarket on the previous Bi-Lo site. As discussed in the qualitative research, Gunnedah Council intends to spend \$4 million on improving the main street.

Gunnedah sees itself as attractive to business because of its rail and road transport links. There is an airport at Gunnedah with daily connections to Sydney, but it is expensive compared to flying in and out of Sydney and Brisbane from Tamworth.



Gunnedah has the following business and industry groups:

- Gunnedah and District Chamber of Commerce and Industry
- Gunnedah Stock and Station Agents Association
- New South Wales Farmers Association
- Tourism Gunnedah (Gunnedah Visitors Information Centre)
- Gunnedah District Unlimited. (Main Street Program)

Boggabri:

For a small town, Boggabri enjoys a reasonable level of service from local organisations. Facilities include:

- Service station
- Court House:
- Caravan park
- Motel

¹ Gunnedah Council website (and picture following)

- Supermarket
- Take away food store
- Post office
- RSL club, Bowling Club and Hotels:
- 9 hole golf course
- Bowling club
- Police station
- NRMA offices and service centre
- Library
- Fire brigade
- A variety of churches
- Sporting fields

4.2 Educational Facilities and Childcare



Boggabri Primary School

Boggabri is serviced by 1 preschool, 1 public primary school and 1 catholic primary school. Generally students living in Boggabri will travel to Gunnedah to attend High school. Boggabri also has a playgroup and a Family Day Care service.

There are 3 primary schools, and 1 high school serving **Narrabri**. Narrabri High School is fed by a number of other primary schools operating in small villages around the Narrabri Shire. The Narrabri township has a range of occasional and daycare centres and pre-schools.

Narrabri TAFE College operates from Barwon St Narrabri. The TAFE is innovative and a recognised leader in engineering and manufacturing training. It is currently “gearing itself up” for an anticipated growth in the mining sector in the area. TAFE courses being offered in Narrabri in 2006 are detailed overleaf.



Narrabri TAFE Campus

2006 Narrabri TAFE Courses

In 2006 Narrabri TAFE will offer a range of courses suitable for mine workers (engineering, manufacturing, reception skills, payroll, bookkeeping, IT) as well as courses that may be of interest to mine workers' partners (childcare, business skills, digital photography etc). The options are extensive and will provide support to the emerging mining and related supply industries in the region. A full list of 2006 courses appears at **Appendix 1**.

In **Gunnedah** there are four primary schools: 2 state schools, 1 Catholic and 1 Christian Community School. There are also two high schools in Gunnedah, a state school and a Catholic High School; St Mary's College. Gunnedah Township is served by a range of childcare centres and preschools, comprising one long day care, four preschools and one occasional care centre.

Gunnedah TAFE operates from Hunter Street, also providing a range of state approved courses, and local content. Gunnedah TAFE, like Narrabri TAFE, will benefit from mining growth in the region and is likely to provide flexible delivery options to new and young workers.

The nearest university campus is the University of New England, which has a campus in Armidale.

4.3 Healthcare Facilities

Boggabri



Boggabri Rural Hospital and Health Service.

The new Boggabri Hospital and Health Service was officially opened in August 2002. The hospital provides multiple health services under one roof. Services at Boggabri include the hospital and health service, 16 aged care accommodation places and associated facilities, 4 inpatient beds, emergency, day care, radiology, community health services and an ambulance

service. Visiting community health staff offers foot clinics, diabetes education, blood pressure clinics, baby health, dietician, and aged care assessment. There is a seven days per week Meals on Wheels service provided by the Health Service.

Boggabri residents have access to 2 local GPs. There is no chemist in Boggabri, but a script drop off / pick up service operates through the post office. (Conversations with local people indicate a strong desire to regain a local chemist shop, even though the script delivery service is much appreciated)

Home and Community Care also runs programs in the town for elderly residents.

Narrabri Shire

Narrabri is serviced by a District Group Level 2 (community acute) Health Service. This service provides:

- Acute care
- Medical
- Surgical
- Maternal
- Pediatric Services
- 24hr emergency department.

In addition to the service at Boggabri, Community Health Services are located at Narrabri and Wee Waa.

There are a number of Aged Care residential facilities in Narrabri. The Jessie White Nursing Home has 60 nursing home places, while the Namoi Valley Aged Care Hostel has 33 hostel places.

Home and Community Care programs operate from Maitland Street, Narrabri, and include community transport.

Gunnedah Shire

Gunnedah has a hospital providing 50 beds. The hospital provides a high standard of general medical and surgical services including a Slow Stream Rehabilitation Unit and a day surgery care facility together with a Public Health Dental Clinic and a Physiotherapy Unit.

Gunnedah Community Health Service provides:

- Adult mental health
- Aged health
- Alcohol and drug services
- Child health

- Community nursing
- Counseling
- Dental services
- Domiciliary nursing
- Family health services
- Health promotion
- HIV/AIDS services
- Speech therapy
- Women's health

In addition to the Gunnedah Health Centre, other health centres are located in Tamar Springs and Premer. There is an Aboriginal Health Service in Gunnedah as well.

A range of aged care facilities are available in Gunnedah. The Gunnedah Nursing Home has 58 nursing home places. The Alkira has 32 hostel places and McAuley Aged care has 22 hostel places. Yalambi has 13 units. The Frail Aged hostel provides 24 hour-a-day care.

Other health care options in Gunnedah include:

- NSW Ambulance
- Baby health centre
- X-ray facilities
- Pathology services.

Home and Community Care (HACC) provides services to the aged community. These include frail-aged care, home care service, community transport and Meals on Wheels.

4.4 Local Capacity: Demand and Supply

As shown above, the range of clubs, service organisations, facilities and government services available in Narrabri and Gunnedah Shires indicate a well serviced community with high levels of social capital. This also true in Boggabri, however the small population in that community makes a full range of services unsustainable and commercially unviable (the loss of the Chemist in recent years being a relevant example). This is even more evident in the much smaller village of Baan Baa which closed its school at the end of last year. A potential increase in population associated with the establishment of the Narrabri Coal Project could help communities establish critical mass and attract more services and facilities.

The section below will endeavour to estimate a likely profile of new residents being drawn to the area as a result of employment, or employment of an immediate family member, and the subsequent extra demand placed on local services. Estimates are intended to be indicative only as a number of factors confound any attempt to more clearly predict extra demand placed on social services. These are as follows.

- There is no clear indication where new residents may choose to live. It is predicted that most will choose to reside in Narrabri, due to its higher levels of servicing than smaller towns such as Boggabri and Baan Baa. Subsequently, analysis below will centre upon Narrabri, and assume that 80% of all incoming residents will reside there.
- There is no indication what proportion of workers will be sourced locally. Many mining jobs require skills that may not be immediately available. However, it is likely that the number of local residents employed would rise in the future as initiatives to provide locals with skills lead to the coming online of an appropriately skilled local workforce.

Bearing in mind the caveats above, an estimate as to the incoming population can still be formulated. The greatest influx of population will be associated with the mine commencing its operational stage, employing an estimated 94 persons. Construction stages of the mine are projected to employ fewer workers, and such workers would have a higher propensity to be sourced locally. The following calculations will conservatively assume that 60 workers (around two thirds of total employment) will be sourced from outside Narrabri, and that 48 (80%) of these will choose to live in Narrabri. It will also assume that these incoming workers will reside in a household with an average 2.6 persons, which was the state mean in 2001. Using these figures, an estimated incoming population as a result of direct mine employment would be 125 persons. The table below estimates the likely number of children under 5 and school children associated with the incoming population

Estimated population increases as a result of direct mine employment:

Incoming Workers:	48
NSW mean household size	2.6
Projected incoming population:	125
Estimated children under 5 (NSW average, 7%)	9
Estimated primary school children (NSW average, 9%)	11
Estimated high school children (NSW average, 7%)	9

The estimates above reveal an essentially modest increase in population associated with the project. Accordingly, increased demand on social infrastructure such as schools and medical services will be manageable:

- Estimated figures of an additional 11 and 9 primary and high school children, respectively, are a very small proportional increase in school enrolments. In Narrabri in 2001² there were reportedly, 639 primary school children and 421 high school aged students, most of whom were presumably attending a local school.
- The Barwon Division of General Practice (BDGP) reports that the Narrabri LGA has 10.1 general practitioners servicing a population of 13,932³, giving a FTE GP ratio of 1:1,393. The addition of another 125 people would only marginally alter this ratio to 1:1,405. Both of these ratios are higher than what the BDGP would like to see and the undersupply of GPs is an issue that affects a majority of regional areas across the state. Importantly, increased economic activity and vibrancy in the area as a result of mining activity may help Narrabri attract more general practitioners, or explore alternative models such as nurse practitioners.
- “Soft” infrastructure such as sporting clubs and community groups will be able to accommodate increases in population as outlined above. In fact, added population may contribute to their increased vitality. Other social infrastructures such as sporting facilities, Narrabri’s theatre and shopping facilities are also well placed to accommodate a modest population increase.
- There is a strong TAFE offering a range of courses and the flexibility to respond to emerging needs.

The key areas evident throughout this research that raise capacity issues as a result of this mine, and the cumulative impact of other mining in the area, are:

- Education & Training Capacity
 - For mining personnel
 - To support local employment
 - For the families of miners (children, teenagers and partners)
- Housing Capacity
 - To support population growth
 - Local government support through LEPs and zonings.
- Economic Development and Employment Capacity
 - Ability to attract local supply industries
 - Ability to staff and train local workers in the supply industries
 - Career pathways, particularly for young locals
 - Local government support through zonings and development programs

² ABS 2001 Census. Narrabri Urban Centre/locality, Table B11.

³ Barwon Division of General Practice, Planning & Report Summary for the year 2004 - 2005

In view of the range of available services detailed in this section and particularly the courses and expertise offered by the local TAFE, combined with the positive attitude of the local Council, the region should be confident that it currently has, or would quickly develop, capacity in the three main areas highlighted above to meet the demands of a growing population of mine workers and related trades.

5. COMMUNITY CONSULTATION

Both the Department of Primary Industries (Mineral Resources) (DPI - MR) and the Narrabri Shire Council have indicated the need for community consultation as part of the project. Such consultation will provide adequate information for residents, and an appropriate forum to express opinions or concerns.

The Proponent has undertaken local consultations with near neighbours and community people. A log of consultations appears at **Appendix 5**. The following is a summary of consultation undertaken by the Proponent.

Consultation with Surrounding Landowners

Consultation with the surrounding landowners (within an approximate 4km to 6km radius of the Pit Top Area) commenced in March 2004 with representatives of the Proponent meeting with the owners of nine local properties and NSW Forests to discuss the project in a general / conceptual manner. Several landowners were contacted on more than one occasion during this time (March to June 2004). Between June 2004 and November 2005, follow-up consultation, focussed upon negotiating the purchase of the properties required for the surface facilities of the project was undertaken.

Since November 2005, and following the purchase, or agreement to purchase a number of properties within the Project Site, consultation has subsequently focussed on one-on-one discussions with local landowners regarding the specific project design, the possible environmental impacts and the approvals process. The contacted landowners have expressed their concerns over the project with most indicating possible impacts on groundwater availability and property values were of greatest concern.

Consultation with the Local Community

In June 2004, the Proponent held preliminary discussions with a number of people within the village of Baan Baa, outlining the project. Those consulted were generally in favour of the then proposed project. The wider local community was kept informed through a number of newspaper articles in the local press (the Land, Namoi Valley Independent, North West Magazine and The Courier) since 2004 with respect to the project. These articles have largely been supportive of the project and the potential economic and social benefits to the local area that would result from the development of the project. Community newsletters, providing information on the project and the approvals process, have also been circulated.

The Community Newsletter No. 1 appears at **Appendix 4**.

Consultation with Government Authorities

A Planning Focus Meeting was held for the project on 29 September 2005. The meeting was attended by representatives from all relevant government agencies and included a site visit and a presentation about the project.

A number of issues to be covered in the *Environmental Assessment* were identified during the meeting and these issues were subsequently formalised in correspondence from each government agency. This correspondence was forwarded to the Department of Planning (DoP) and was distilled into the Director-General's requirements (DGRs), issued by the DoP. The DGRs identify key assessment requirements which are required to be included in the *Environmental Assessment* along with a description of what measures would be implemented to avoid, minimise, mitigate, offset, manage and/or monitor these impacts, as follows.

- Subsidence.
- Soil and Water
- Noise.
- Air Quality.
- Greenhouse Gases
- Traffic and Transport.
- Flora and Fauna.
- Heritage.
- Visual Amenity.
- Socio-economic.
- Cumulative Impacts.

6. QUALITATIVE RESEARCH

The qualitative research for this report has been shaped by the trends identified in the literature review. With housing, employment and education the consistent themes over the last 20 years this research concentrates on gathering input from professionals working in those areas.

A series of phone interviews with key stakeholders was undertaken by Key Insights. These included interviews with Rob Gilbert and Paul Thomas (real estate agents from Narrabri), Pete Smith from Narrabri TAFE, Rod and Juline Young (representing the NSW Farmers Association) and Viv Fouracre, the principal of Baan Baa Public School. The Narrabri Shire Council was also represented in these interviews by Councillor Ken Bates and Bill Birch, the Narrabri Council Economic Development Officer.

The interviews yielded quite similar opinions and themes. These are outlined below. More complete accounts of each interview can be viewed at Appendix 3.

The most common theme in the interviews was a broad support for this and other coal mining proposals in the area. There was an understanding that mining in the area will lead to increased economic and social benefits for the area. Mining represents a welcome diversification of the economic base in the Narrabri. This is especially true given that the number of people employed in agriculture, traditionally the Shire's strongest sector, is declining due to improved technology.

Key Insights' discussions with real estate agents from the area revealed a housing market that had plateaued after a number of years of strong growth. Even with static prices, the purchase and rental markets were described as tight, due chiefly to the relative shallowness of the

market. However, the potential for a quick adjustment was identified, if an increase in population due to an influx of mine workers occurred. The potential for this adjustment comes from a reasonable quantity of subdivided vacant land in Narrabri, and latent entrepreneurial energy that would quickly react to increased housing demand in the area.

Narrabri was identified as the most likely place of residence for workers on the Narrabri Coal Project (Stage 1), although a number of potential employees are already residents of Gunnedah. This was due to the higher level of services and facilities in Narrabri than other villages such as Boggabri and Baan Baa. However, there was a level of satisfaction in the services level in each of the towns of Boggabri and Baan Baa, even with the lower levels of service (for example the lack of town water in Baan Baa). Interviewees were of the opinion that a majority of workers would be willing to make the drive to the site from Narrabri (approximately 30km) in order to take advantage of the town's higher levels of social infrastructure.

The issue of skilled workers for the mine was raised by a number of interviewees. It was recognised that mining is a skill intensive industry, and that these types of skills may not be sourced locally, at least in the short term. There was, however, the desire that, wherever possible, workers be sourced locally; "commitment to employing locals must be there". The Narrabri TAFE was identified as important infrastructure in ensuring the skilling of local workers. The TAFE was identified as having capacity to take on mine related students. It is important to encourage young people in to the "blue collar trades"; many young people leave the area to pursue a university education. It was identified that some people with skills had moved away from the area for employment, but would welcome the opportunity to return.

Rod and Juline Young from the NSW Farmers' Association raised issues mainly of an environmental nature, dealing with the number of proposed mines in the area and potential effects on groundwater. The loss of a relatively small parcel of agricultural land for the pit top was not seen as a major issue.

7. OPPORTUNITY FOR COMMUNITY CONTRIBUTIONS

7.1 Introduction

There have been **opportunities** identified for the Proponent to contribute to the local community at a number of levels. The community is generally very supportive of proposed mine activity in the area and keenly anticipates the range of social and economic benefits that can accrue to the community through mining activity.

7.2 Opportunities

7.2.1 Partnership with Narrabri TAFE

The Proponent should look to partner with Narrabri TAFE in ensuring the demand for skilled labour can eventually be sourced locally. A cooperative approach could ensure that appropriately focused training is taking place. This would have benefits accruing to both the Proponent and the local community.

- The Proponent would receive benefit through contributing to the supply of locally sourced skilled and semi-skilled labour. In the current environment of skills shortages in the mining industry this would reduce costs associated with recruitment and retention.
- The community would also benefit. There is a considerable pool of underutilised labour in the form of unemployed young people. The existence of structured training with clear career outcomes would also help reduce the out-migration of the area's young people, leading to a more diverse, vibrant community.

The Narrabri TAFE also has a number of specialised programs that the Proponent could contribute to, and benefit from:

- the National Centre for Innovation (NCI) operates through the TAFE, linking young innovators with the expertise and capital to commercialise their ideas. The proposed mine would be in a position to make available various individuals with skills relevant to this program: for example, engineering skills, marketing skills and international business skills. Involvement with this program would also give the mine “ground-level” access to innovations which may have marketable application within the mining industry; and
- “Business Incubator” programs that may be run through the TAFE. Once again, the Proponent would be in a position to contribute financial or personnel resources to the program.

7.2.2 Cooperation and open communication with Narrabri Council

Key Insights' discussion with Bill Berch, the Economic and Development Officer from Narrabri Council revealed that Council was keen to foster open communication with the Proponent in order to use the mine as a “benchmark” for the area. Key Insights recommends that open communications be fostered between the mining company and Council. This would enable the targeting and establishment of appropriate supply-related businesses for the area. This, in-turn, would provide further economic and employment related benefit to the area, and would also provide efficiencies for the mining operation.

7.2.3 Contribution to Town Facilities

During Key Insights' qualitative research, the idea of funding a level of community infrastructure was raised. Further community and Council consultation may yield appropriate ideas on the level and type of services that would be beneficial for the local area. The funding of community facilities would both enhance the Proponents standing in the local community and enhance the reputation of the local towns and villages as desirable places to live and work.

7.3 Constraints

In terms of **social constraints**, very few were identified throughout this research. Careful attention should be given to the following.

- Minimising the negative effects of noise associated with additional coal trains travelling through Baan Baa.
- Minimising and managing environmental impacts, particularly on near neighbours.

8. CONCLUSIONS

The Narrabri/Gunnedah regions have been experiencing declining populations over recent decades. While cotton production has been a fairly resilient industry for Narrabri (although new water management legislation may affect its viability), Gunnedah has been particularly hard hit by the drought. There has been net out-migration from rural areas, especially as a result of young people moving to regional centres in search of further work and educational opportunities.

However there seems to be an emerging sense of renewal present in the area related to new developments in mining and gas projects. Community capacity building projects such as new aged care facilities are also creating employment and a more positive outlook for the region. The communities tend to see mining as a positive way to bring population growth and much needed diversity to the local economy.

Recent studies for new mines in the area have identified the issue of housing supply. Separate houses are the overwhelmingly dominant form of housing in the area. While there is land that would accommodate population increase in both Narrabri and Gunnedah, an influx of new workers may provide short-term stress on the market.

However, interviews with Narrabri real estate agents reveal a responsive sector of entrepreneurs willing to develop land and build houses on the possibility of new mines opening up. Local government has identified areas in Boggabri for development and several estates in Narrabri have vacant land available for purchase now. Baan Baa's capacity for growth is limited by the lack of a town water supply.

It is the view of this researcher that there is likely to be sufficient housing capacity to support population growth associated with this project, even in the light of cumulative demand associated with other mines in the area.

The reports reviewed for this research portray the Narrabri and Gunnedah economies as being chiefly driven by agriculture. Subsequently, the labour market and skills pool is not particularly deep. The labour market is quite tight in the areas of professionals and skilled trades. These structural conditions of the labour market may mean that it is necessary to import a considerable proportion of the workforce, notably those with highly developed, mining related skills. There may also be a transfer of workers from the agriculture sector to the better paid mining sector. However, high levels of youth unemployment suggest a considerable pool of young workers, who would be available to engage in low-skill jobs or participate in structured training.

Qualitative research with the local TAFE Institute reveals an organisation that is “gearing up” to train local people for work in the mines and related industries. Courses on offer next year fit with the skills mix required by mining and related industries. One challenge will be to encourage young people into that sector.

It is the view of this researcher that the local training capacity is sufficient to meet the needs of the Project and would over time equip local people with the necessary skills to contribute to the growing economy. An innovative and entrepreneurial attitude has been demonstrated by TAFE which stands the region in good stead for capitalising on mining and related industry growth.

It has been documented that the establishment of supply industries in Boggabri is planned. This will support the economic development of that town and is welcomed by local people. The qualitative research has also revealed anticipation of general increases in trade for most businesses in the area, for example the local pub at Baan Baa.

In addition to opportunities in education and training, population growth will also increase the numbers of local people available to work for service and sporting organisations and generally enhance the viability of local voluntary groups. The range of clubs, service organisations, facilities and government services available in Narrabri and Gunnedah Shires indicate a well serviced community with high levels of social capital. It is a strong community that will be strengthened further by new workers coming to the area and hopefully by a higher retention rate of its young people.

In summary, the development of the Narrabri Coal Project (Stage 1) would deliver the following positive social impacts.

- Reduction of social stress through provision of local jobs and enhanced economic well being.
- Training opportunities for local people, including young people and indigenous people, in a growth industry (mining).
- Contribution to the diversity of the economic base in Narrabri Shire therefore enhancing the sustainability of rural communities within the Shire.
- Stimulus to local businesses, particularly in Narrabri, including motel and hotel trade, cafes and restaurants, mining related engineering and surplus spending activity such as gyms, cinema, recreational goods and services, beauty salons, and hair dressers.
- Increased population to participate in locals clubs, sporting groups, cultural activities, and organisations, therefore contributing to stronger social networks and social capital.
- More volunteers for community service organisations.

In terms of **social constraints**, very few were identified throughout this research. Careful attention should be given to the following.

- Minimising the negative effects of noise associated with additional coal trains travelling through Baan Baa.
- Minimising and managing environmental impacts, particularly on near neighbours (note that an ongoing consultation strategy is currently being undertaken with near neighbours by the Proponent and Community Newsletter 1 appears at **Appendix 4**).

9. REFERENCES

1. Environmental Impact Statement AMAX/BHP Joint Venture. Boggabri Coal Project: “Analysis of Social and Economic Aspects- Gunnedah, Boggabri, Narrabri District”. Nexus Environmental Studies, February 1982.
2. Environmental Impact Statement for the Whitehaven Coal Mine Proposal. March 2000
3. “East Boggabri Joint Venture: Socio-Economic Assessment of the Proposed Mine Site” Key Insights and Castlecrest Consulting, May 2005

Appendices

(No. of pages excluding this page = 36)

- Appendix 1: 2006 Narrabri TAFE Courses**
- Appendix 2: National Innovation Centre Proposal**
- Appendix 3: Key Community Stakeholder Telephone Interviews**
- Appendix 4: “An Introduction to the Narrabri Coal Project” Community Newsletter**
- Appendix 5: Surrounding Landowner Consultation Log – Narrabri Coal Project**

This page has intentionally been left blank

Appendix 1

2006 TAFE Courses offered in Narrabri

(No. of pages excluding this page = 7)

This page has intentionally been left blank

Appendix 1: 2006 TAFE Course

The following courses will be offered by Narrabri TAFE in 2006:

[683:SEAFOOD INDUSTRY \(AQUACULTURE\)](#)(Narrabri)

InlandAquacultureAward:CertificateIII

[797:AGRICULTURE](#)(Narrabri)

IntermediateLevelTrainingforAgAward:CertificateIII

Training in practical skills and underpinning knowledge for people who are working in or have had some experience in the Agricultural sector. This course is also offered as a traineeship course.

[923:RURAL BUSINESS](#)(Narrabri)

CreditWhereCredit'sDueAward:CertificateIV

Evidence based pathway for women involved in administering a farm business to improve business management skills and gain accreditation for current competence.

[1586:HORTICULTURE](#)(Narrabri)

PracticalBasicHorticulturalTrainingAward:CertificateIII

[3299:CHILDREN'S SERVICES](#)(Narrabri)

SOAinChildrenAward:StatementofAttainment

This course is for people currently employed in the Children's Services industry or those seeking employment in the industry. All modules offered are included in the Certificate III and Diploma in Children's Services.

[3445:ENGINEERING PRODUCTION](#)(Narrabri)

EngineeringProductionAward:CertificateII

This is a Traineeship Course. The course aims to provide: * training which is flexible and which meets the needs of industry and individuals. * training for persons under New Apprenticeships (apprentices or trainees) in the manufacturing, engineering and related industries. * training and skill development in production/process areas and other related fields. Specifically, the course aims to provide students with the opportunity to gain skills and knowledge in: - a group of foundation competency units including: * Undertake interactive workplace communication * Apply principles of occupational health and safety in work environment * Apply quality procedures * Plan to undertake a routine task - a core competency unit which is necessary in the industry. - a range of specific industry competency units at operator level. The course includes provision for any necessary on-the-job training and assessment. Training in the course is mainly student centred and involves the integration of theory, demonstration and practice.

[3449:ENGINEERING FABRICATION TRADE](#)(Narrabri)

Manufacturing&EngineeringTrainingProAward:CertificateIII

This is an Apprenticeship Course. This course meets the Engineering Tradesperson(Fabrication) Vocational Training Order. The course is made up of a bank of national competency units. Specifically, the course aims to provide students with: - a range of broad base generic skills which includes communication, occupational health and safety and other basic trade skills - a range of fabrication and forging electives which allow for the

acquisition of skills and knowledge in either the casting and moulding, fabrication or forging areas. - a range of electives from other metals streams, allowing for some cross-skilling amongst the different trade areas - recognition of on the job training and assessment, for the purpose of course completion The course is designed to be competency based, with delivery being mainly student centred and involving integration of theory, demonstration and practice.

[3650:INFORMATION TECHNOLOGY](#)(Narrabri)

HardwareandSoftwareInstallationAward:CertificateII

This course is a nationally recognised qualification in the Information Technology Training Package. The course provides the foundation skills for people entering various areas of the information technology industry. This course covers the basic setting up and use of computing equipment and a range of applications selected from word processing, spreadsheet, database, presentation graphics and use of the internet including email. In addition to these technical skills the course also develops those skills required to operate successfully in the workplace.

[3650:INFORMATION TECHNOLOGY](#)(Narrabri)

Award:CertificateII

This course provides basic computer skills required in an increasing proportion of contemporary job roles. It covers basic skills required to successfully operate a personal computer and operate a range of application software including word processing, spreadsheets, database, presentation packages, email and Internet browsers. The outcomes provide a foundation for developing higher order computing and information technology skills.

[3651:INFORMATION TECHNOLOGY \(SOFTWARE APPLICATIONS\)](#)(Narrabri)

SystemsHardware/NetworkingAward:CertificateIII

This course is a nationally recognised qualification in the Information Technology Training Package. The course provides skills in the advanced use of software applications and intermediate use of hardware. A person with these competencies could provide basic software support to a unit or branch within an organisation. This course covers advanced use of software applications and customising of software for specific business requirements.

[3655:INFORMATION TECHNOLOGY \(CLIENTSUPPORT\)](#)(Narrabri)

SystemHardware/NetworkingAward:CertificateIV

This course is a nationally recognised qualification in the Information Technology Training Package. The course provides skills in the advanced use of hardware and software applications. A person with these competencies could provide basic hardware and software support to a unit or branch within an organisation. This course covers advanced use of hardware including network setup and support and is aimed at supporting clients and their specific needs.

[3659:INFORMATION TECHNOLOGY \(PROGRAMMING\)](#)(Narrabri)

Award:CertificateIV

The course provides skills in programming for commercial systems. You will achieve high-level programming skills in one programming language and learn about two other computer programming languages, including at least one object-oriented language. You will be able to produce correct, tested and documented programs.

[3666:INFORMATION TECHNOLOGY](#)(Narrabri)

SoftwareApplicationsAward:StatementofAttainment

This course is made up of a bank of modules drawn from the Information Technology (IT) Foundation and Training Package courses. It has been designed as a general-purpose course intended for people who want specific training in a range of IT areas related to their work or training needs. Subjects: Develop macros and templates for clients; Migrate to new use of technology; Customise packaged software applications; Advanced operations of computer applications.

[3666:INFORMATION TECHNOLOGY](#)(Narrabri)

HardwareandSoftwareInstallationAward:StatementofAttainment

This course is a nationally recognised qualification in the Information Technology Training Package. The course provides the foundation skills for people entering various areas of the information technology industry. This course covers the basic setting up and use of computing equipment and a range of applications selected from word processing, spreadsheet, database, presentation graphics and use of the internet including email. In addition to these technical skills the course also develops those skills required to operate successfully in the workplace.

[3750:INFORMATION TECHNOLOGY](#)(Narrabri)

Award:CertificateI

This course teaches you how to use computers. You learn about different computer systems, use word processing, spreadsheets, database and presentation applications software. You will gain competence in the use of Windows and accessing the Internet. This course is for people who have a little computer experience and is a first step towards other IT Certificates and Diploma courses. This course incorporates Computers, A First Course (3771) and on completion you will be eligible to sit for the ICDL (International Computers Driving Licence).

[3771:COMPUTERS, A FIRST COURSE](#)(Narrabri)

Award:CRSIN

This course teaches you how to use computers. You learn about different computer systems, use word processing, spreadsheets, database and presentation applications software. You will gain competence in the use of Windows and accessing the Internet. This course is for people who have no computer experience and is a first step towards IT Certificate Courses.

[4190:GENERAL AND VOCATIONAL EDUCATION \(CGVE\)](#)(Narrabri)

Equivalenttoyear10Award:CertificateII

This course provides you with a year 10 equivalent. However, it is also useful for mature people who wish to enter into study for the first time or after a long break.

[4460:COMMUNITY SERVICES WORK](#)(Narrabri)

SOACertificateIIinCommunityServiceAward:StatementofAttainment

This course is designed for people who are interested in improving their skills at working in communities. It covers areas such as communication, liaising with individuals, groups and communities and project work within communities. These modules when completed will provide advanced standing in further community services studies.

[4480:AGED CARE WORK](#)(Narrabri)

CertificateIIIinAgedCareWorkAward:CertificateIII

This course is for people who want to enter the workforce as Nursing Assistants in the aged care industry.

[6518:LANGUAGE, LITERACY AND NUMERACY](#)(Narrabri)

ReadingandWritingskillsforadultsAward:CertificateIII

This course is designed to improve your reading ,writing, numeracy, conversation and basic computing skills. It will give you skills that may help you find employment or to go onto further study.

[6518:LANGUAGE, LITERACY AND NUMERACY](#)(Narrabri)

WritingandSpellingforworkingmenAward:CertificateIII

This course is designed to improve your reading ,writing, numeracy, conversation and basic computing skills . It will give you skills that may help you find employment or do further study.

[7698:COTTON GINNING](#)(Narrabri)

CottonGinningAward:CertificateIV

The aim of this course is to allow ginner technicians in the Cotton Ginning sector to acquire and apply competencies required for safe, effective work practices.

[8429:RECEPTION SKILLS](#)(Narrabri)

Award:StatementofAttainment

This course is for people who want to enter the workforce or to retrain as receptionists. You will learn skills relating to business technology, wordprocessing, telephone operations, interacting with clients, writing business documents, processing financial documents, handling mail, organising daily work activities and participating in workplace safety procedures. You may choose elective modules in spreadsheets, databases, designing and developing texts, accessing the Internet, organising schedules and arranging business travel.

[8898:BUSINESS SKILLS](#)(Narrabri)

ComputerSoftwareIntermediate/AdvancedAward:StatementofAttainment

This very popular course is for those people who have passed the beginner stage of learning about software and are ready to advance. You are able to choose which software you would like to learn and study at a self-paced mode to fulfil your own learning needs.

[9347:SPECIALIST WORD PROCESSING](#)(Narrabri)

Award:StatementofAttainment

This course is for people who want to work as specialists or supervisors in an office or business environment, or for people who want to extend their skills or retrain in computer applications for a range of executive administrative occupations. You will develop a range of advanced business technology skills and become familiar with word processing, database and spreadsheet software used in business.

[9488:BOOKKEEPING](#)(Narrabri)

Award:StatementofAttainment

This course is for people who want to learn bookkeeping skills. You learn clerical financial procedures, bookkeeping and computer accounting. Career Opportunities: Junior accounts clerk, accounts receivable or accounts payable clerk, bookkeeper.

[9682:INTRODUCTION TO MICROSOFT OFFICE](#)(Narrabri)

Award:StatementofAttainment

This course is for people who want to work as clerical or office assistants or for people who need to improve their skills and retrain in computer applications for clerical jobs. You will learn about office technology used in business, including keyboarding practices and the main features of word processing, database and spreadsheet software packages.

[9684:COMPUTING SKILLS FOR THE OFFICE](#)(Narrabri)

Award:StatementofAttainment

This course is for people who want to work as clerical/office assistants in an office or for people who need to improve their skills or retrain in computer applications for clerical jobs. You will learn about office technology, including keyboarding and the main features of word processing or spreadsheet software packages used in business. When you finish this course you may be eligible to do Business Certificate II 9764.

[9685:WORDPROCESSING](#)(Narrabri)

Award:StatementofAttainment

This course is for keyboard operators who want to become word processing operators. You learn how to apply the features of a word processing package to prepare correspondence and design standard forms. You also learn about audio input, changing technology and how to produce office documents using a range of software such as spreadsheets, presentation software and databases. When you finish this course you can apply for advanced standing in Business Administration Certificate III 9768.

[9764:BUSINESS](#)(Narrabri)

Award:Certificatell

This course is for people who want to work in businesses as a clerk or administrator or Small Business Trainee. You will acquire the skills and knowledge needed to work in different business situations. You will learn about a range of business equipment, procedures and technology.

[9768:BUSINESS ADMINISTRATION](#)(Narrabri)

Award:Certificatelll

This course aims to provide participants with skills, knowledge and attitudes to meet the National Administration Competency Standards at Levels II and III. This course is recognised by the Institute of Professional Secretaries and Administrators (IPSA). The course includes comprehensive tuition in numerous computing areas (typing, word processing, spreadsheets, database, internet, email etc) plus training in office, communication, team and financial related areas. When you have successfully completed this course you can enrol with advanced standing in the CIV in Business (Administration).

[9770:BUSINESS ADMINISTRATION](#)(Narrabri)

Award:CertificateIV

This course aims to provide learners with the skills and knowledge required for employment at the team leader level in administrative business operations. The course emphasises developments of skills including: - developing complex business documents - administering projects - producing complex databases and spreadsheets - building and leading teams and provides for development of a range of specialist skills, including: - arranging business travel - preparing routine financial reports. This course provides articulation into 9771 Diploma of Business Administration and 9767 Diploma of Business.

[9799:COMPUTER APPLICATIONS FOR THE OFFICE](#)(Narrabri)

Award:CertificateII

This course provides computer training to Certificate II level. It includes typing, computer operations using Windows XP, word processing, spreadsheets, internet, email, electronic commerce and banking, OH&S, desktop publishing. You are also provided with training in Job Seeking skills. After completing this course, you can enrol in Certificate III in Business should you wish to study further.

[9877:MANUFACTURING AND ENGINEERING](#)(Narrabri)

MultipleweldingandfabricationmodulesAward:StatementofAttainment

This training program is made up of individual modules (subjects) which are recognised throughout Australia. Modules completed successfully can be used to gain higher qualifications in the Metal Fabrication & Welding Industry. The skills and processes covered include: Manual Metal Arc Welding (electric). Gas Metal Arc Welding (MIG) Gas Tungsten Arc Welding (TIG). Oxy-acetylene Welding. Hand & Power Tools Advanced Cutting Gouging & Shaping. Occupational Health & Safety Material Science. Metal Fabrication. Engineering Drawing.

[9877:MANUFACTURING AND ENGINEERING](#)(Narrabri)

MultipleweldingandfabricationmodulesAward:StatementofAttainment

This training program is made up of individual modules (subjects) which are recognised throughout Australia. Modules completed successfully can be used to gain higher qualifications in the Metal Fabrication & Welding Industry. The skills and processes covered include: Manual Metal Arc Welding (electric). Gas Metal Arc Welding (MIG) Gas Tungsten Arc Welding (TIG). Oxy-acetylene Welding. Hand & Power Tools Advanced Cutting Gouging & Shaping. Occupational Health & Safety Material Science. Metal Fabrication. Engineering Drawing. Learners will gain skills and credit in a number of welding techniques. Recognised in trade certificates and the workplace.

[9877:MANUFACTURING AND ENGINEERING](#)(Narrabri)

MultipleweldingandfabricationmodulesAward:StatementofAttainment

This training program is made up of individual modules (subjects) which are recognised throughout Australia. Modules completed successfully can be used to gain higher qualifications in the Metal Fabrication & Welding Industry. The skills and processes covered include: Manual Metal Arc Welding (electric). Gas Metal Arc Welding (MIG) Gas Tungsten Arc Welding (TIG). Oxy-acetylene Welding. Hand & Power Tools Advanced Cutting Gouging & Shaping. Occupational Health & Safety Material Science. Metal Fabrication. Engineering Drawing.

[9877:MANUFACTURING AND ENGINEERING](#)(Narrabri)

WeldingandFabricationmodulesAward:StatementofAttainment

This is a beginning class of welding and fabrication studies in both theory and practical lessons.

[9938:RETAIL OPERATIONS](#)(Narrabri)

Award:CertificateII

This course provides the training required by anyone wishing to perform the role of an entry-level employee in the retail industry under direct supervision or as part of a team. In particular, it addresses problem-solving, communication, assessing and recording information, working with others, as well as the technical skills needed by a competent retail employee. This course can be undertaken as part of a traineeship.

[9943:PAYROLL](#)(Narrabri)

Award:StatementofAttainment

This course is for people who want to learn about the computation and bookkeeping procedures associated with payroll. You will learn how to calculate payroll transactions and post journal entries to payroll clearing account.

[9997:COMPUTER ACCOUNTING](#)(Narrabri)

Award:StatementofAttainment

This course provides comprehensive tuition in computerised bookkeeping using MYOB or QuickbooksProaccountingsoftware.

[32000:SELECTED STUDY](#)(Narrabri)

DigitalImagesandPhotoshopAward:PROG

This course contains a selection of modules from Training Packages. This course will provide participants with the knowledge and skills to use graphics software to create, store, modify and display specified graphics. Participants will use cameras and scanners to capture digital images, and graphics software to edit, modify and enhance photographic images. This course is for people who want to learn how to use a digital camera and scanner and to edit and organise their digital images on the computer and store them onto compact discs.

[32000:SELECTED STUDY](#)(Narrabri)

DigitalImagesandPhotoshopAward:PROG

This course contains a selection of modules from Training Packages. This course will provide participants with the knowledge and skills to use graphics software to create, store, modify and display specified graphics. Participants will use cameras and scanners to capture digital images, and graphics software to edit, modify and enhance photographic images. This course is for people who want to learn how to use a digital camera and scanner and to edit and organise their digital images on the computer and store them onto compact discs.

[32000:SELECTED STUDY](#)(Narrabri)

WebDesignAward:PROG

Create your own fully functional web site using Dreamweaver web development tool. Deploy to your very own in-house web domain. HTML and PHP code investigated.

This page has intentionally been left blank

Appendix 2

TAFE Proposal for a National Innovation Centre

(No. of pages excluding this page = 3)

This page has intentionally been left blank

Appendix 2: A National Centre for Innovation

A Centre for Innovation

The proposal is to create a **National Centre for Innovation** using the existing TAFE infrastructure as a foundation. Building on the success of the staff at the Narrabri campus, the National Centre for Innovation (NCI) would focus on helping innovators to succeed in world markets. In addition the NCI would provide education and training in the area of innovation commercialisation as well as foster innovation and creativity among students and provide industry partners with a viable commercialisation pathway.

The Centre will take a broad view, recognising that innovation is not restricted by industry or geography. However innovation is hampered by the lack of knowledge, skills and finances. By removing barriers to innovation the Centre is expected to become a both magnet and breeding ground for innovation.

Services delivered

1. The NCI will provide a range of services that assist innovators from their very first concept stage right through to commercialisation of their idea into world markets. This commercialisation could be by manufacture and/or licensing. The most significant of the services will be project co-ordination advice, links to experts and links to financiers.
2. The NCI will facilitate training to assist innovators develop and commercialise their ideas.
3. The NCI will take contracts to solve problems using its network of associates.

Structure of the NCI

The NCI will be a not-for-profit incorporated entity sponsored by the New England TAFE and the community. It will have at its core a Secretariat with a surrounding partner network. The role of the secretariat will be to assist the innovator move down the path to commercialisation by explaining the requirements at each step and providing assistance to find appropriate expertise. The partner network will include:

1. Referral agencies including:

- Private sector accountants, management consultants and lawyers.
- The NSW Department of State & Regional Development's Business Development Managers
- Business Incubators
- BECs
- AusIndustry
- Local Government Business Development Officers.

2. Service providers and "Experts"

These service providers and experts will provide the innovators with assistance and advice. Sometimes there will be a direct contract between the innovator and the service provider, in other cases to the innovator will obtain the service through the NCI.

The experts and service providers will include patent attorneys, taxation specialists, management consultants, accountants, lawyers, engineers, materials specialists, scientists, venture capitalists, model makers, fabricators, machinists, draftsmen, market researchers, financiers, graphic artists and designers. It is planned that experts will be sought to cover a wide range of industries, applications and technologies so as to be able to support innovators.

In appropriate circumstances the service providers may be students of the TAFE working for the innovator, through the NCI, doing such things as preparing CAD drawings, making prototypes or market research. The students gain by working on real life projects and the innovator gains by having the work done at a low cost.

3. Parallel agencies

The NCI will form links with similar agencies across the globe so as to share expertise and methodologies.

Funding of the NCI

Many of the services provided by the NCI will be fee-for-service but where appropriate it will also consider taking a royalty on the final outcome of the commercialisation and/or success fee based on achieving appropriate milestones such as finding an investor or arranging an IPO. The fee-for-service will be a combination of a fixed price quote or time based fee. In addition it will facilitate innovators making application to a range of support services for finance to develop and commercialise their ideas.

The NCI's clients

The NCI will have a number of different types of client. The three main groups will be innovators, students and persons wanting to learn how to commercialise their ideas and companies or industries with problems that need solutions.

The most numerous group will be **innovators with ideas**. The niche that the NCI will address for this group is:

- The NCI will primarily assist rural and regional innovators although it will also service city and metropolitan innovators, but its marketing will be directed towards the rural and regional areas. The NCI will aim to help innovators succeed in their own area so as to build regional industries.
- The NCI will support innovators in the very early stages of the development of their idea right through to commercialisation. There are a number of venture capitalists and other groups that assist companies in the latter stages of their path to commercialisation, but the NCI will offer services to all stages of development.
- The NCI will offer more “hands-on” support than a referral agency. That is it will not be just a place where innovators go to find out who will give them the information they require. It will provide the co-ordination function to assist the innovator move from step to step along the path. The NCI will be able to provide a lot of information, services and advice from within its network of partners and its own resources.

In the area of **education and training** the NCI will offer courses, both web based and classroom type to innovators, educators and industry. Training based around the concept of innovation and commercialisation will assist on-going industrial development. Students can be

drawn into the Centre from a number of sources. Funding will be sought to provide Contractor Training Programs (CTP) for people already employed and the unemployed. Vocational Education programs for high school students will improve opportunities for young people in rural and regional areas and expand the base of skilled tradespeople within these communities.

A number of countries, particularly developing nations, have also recognised the need to build the knowledge and skills of people who are required to develop their own blue-collar agricultural, manufacturing, transport and other industries. There is therefore a huge pool of potential international students for the Centre. The international marketing of TAFE activities through TAFE Global will help draw these students into the National Centre for Innovation and provide an additional income stream. TAFE education and training programs are a powerful, established and respected tool for transferring new technologies to industry and the community, which enables rapid and effective dissemination of information and innovation.

The NCI will also offer a **problem solving** service using its large network of experts. It will contract to firms and industry associations to bring the expertise of its partners to the problem.

*For more information, contact Peter J Smith, TAFE Narrabri Campus,
87 Barwon St Narrabri NSW 2390 or phone (02) 6792 8840, mobile 0429 923 845 or email
peter.j.smith@tafensw.edu.au*

This page has intentionally been left blank

Appendix 3

Key Community Stakeholder Telephone Interviews

(No. of pages excluding this page = 11)

This page has intentionally been left blank

Appendix 3: Telephone Interviews

The qualitative research for this report has been shaped by the trends identified in the literature review. With housing, employment and education the consistent themes over the last 20 years this research concentrates on gathering input from professionals working in those areas.

Interview with Rob Gilbert, Reg Gilbert Real Estate

Mr Gilbert was asked about the state of the real estate market in the area, including sales, rentals and vacant land. He offered the following comments.

Narrabri:

- A stable market. Slow, steady growth. Grows for a while, then stability
- A bit dependant on the crop. A bad season flows through to the town
- At the moment, there are ½ a dozen flats, and 2 houses for rent. This is a little more than usual. The market is usually fairly tight.
- By the time an announcement is made regarding the opening of a mine, people would be building houses and flats to cater for the new population. People are generally quite aware of the proposed mines, and understand that they will mean an increase in demand for rental accommodation.
- A few people are considering commencing developments of a number of units or small houses.
- There are a number of subdivisions that currently have vacant blocks around the town:
 - “Braylock” has 17 or 18 blocks, around 1200m²
 - “Riverbend” has a number of ¼ acre and 2-3acre blocks on the edge of town
 - “Highfield” has blocks of about 5 acres just out of town
- You can get a decent home on acres for around \$250-400,000, around 8-10km from town
- The “executive” market is catered for in Narrabri. Well paid mining workers looking for something nice can find accommodation, both in houses or units.

Baan Baa:

- It’s a “pleasant enough little village”.
- There are a dozen houses and a pub, it’s just a village

Boggabri:

- Around 1000 people
- It’s well serviced

- The market is tight there. Around 2 years ago, every second house was for sale. Since then, everyone has bought there expecting mines to go ahead at some stage in the future
- There is a lot of land there, although not much has gone ahead at this stage
- There are rumours that someone is looking to undertake a development in the area

Mr Gilbert was asked about where he thought mine workers would want to live, and what their demand for rental or purchased properties would be like. He offered the following comments.

- Narrabri would probably be a place of choice, due to its level of services.
- Gunnedah might be appealing for some workers, especially if they are on shorter tenures and come from the Cessnock or Muswellbrook areas. In this case, Gunnedah might seem closer to home
- Generally people want to travel for the least amount of time to get to work.
- Boggabri would most definitely be a desirable place for mineworkers.

Interview with Paul Thomas, Cramsie McRae Thomas Real Estate

Key insights consulted with Mr. Paul Thomas regarding the state of the real estate market in the Narrabri area, and the ability of the area to cope with increased population as a result of a new mining venture.

Mr Thomas identified the housing market as being fairly static at present, after a few years of strong growth. There are a moderate number of houses available for sale in Narrabri and surrounding areas. Mr Thomas believed that the Narrabri area had an ability to cope with increased population, dependant on the actual size and timing of the increase. If it was 50-100 people, all at once, then this would be a considerable shock to the area.

The rental market is somewhat similar in Mr Thomas' opinion; there are a number of properties available. This number wouldn't be sufficient to accommodate a large, sudden impact. However, Mr Thomas was of the opinion that the rental market would be quick to adjust to increasing demand, meaning that any great mismatch in supply and demand would be soon rectified.

The property market itself is not particularly deep. At any one time, there are probably about 20 serious buyers looking for a house. One hundred potential new buyers in the market would certainly be a huge proportional increase.

Mr Thomas commented that there were a number of new subdivisions supplying vacant land to the local market. The first stage of “Riverbend Estate” is now selling; there are a few blocks still available. The developer has plans for a second stage of about 40-50 blocks. At the moment these aren’t going ahead, as there isn’t sufficient demand, but once the market demand is there they will be released. “Braylock” has around 20 blocks available, toward the south of the town.

Mr Thomas commented that Narrabri was developing. There is a new Woolworth’s store, which is bigger than the one in Gunnedah. The new cultural centre across the road from Woolworths is a big thing, too. It creates a “hub” for Narrabri.

Key Insights questioned Mr Thomas about the housing market in Boggabri. He acknowledged that some miners would want to live there, although there is much less infrastructure and facilities. If people were going to live in Boggabri, they would have to do their shopping somewhere else, for example Narrabri or Gunnedah. It was the opinion of Mr Thomas that most mine workers would rather live in Narrabri with its easy access to clubs, cinemas and a vibrant main street.

Interview with Cr Ken Bates, Narrabri Council

Cr Bates was faxed a list of questions prior to the interview to facilitate his input and therefore the interview follows this questionnaire format.

1. Are you aware of the project?

Yes – the local Council has been briefed – the issues are the same as the previous time we spoke on the East Boggabri Coal Mine proposal; namely:

“Council was very supportive of developing mining in the area as it needed the associated economic growth.”

However, Cr Bates emphasised that because of the location of Narrabri Stage 1 it likely that the benefits will be more focused on Narrabri than Gunnedah.

2. What are the current social and economic issues facing Baan Baa?

Cr Bates reported that Baan Baa was really a very small village without a reliable water supply. The potential for growth was limited and he understood that the local school was closing at the end of the year (2005).

Hopefully the mine will encourage the establishment of related mechanical and supply industries at Boggabri. Previous indications from the mining company suggest a depot for the Repair electric motors will be established at Boggabri and this will be most welcome.

Cr Bates indicated that land is available at Baan Baa, but it lacks a town water supply. The small rate base makes supplying water cost prohibitive. Modelling has been done and the cost of supplying town water to Baan Baa is estimated to be around \$1.3M. That would involve piping water from Boggabri, which has excellent ground water reserves. There is a town dam in Baan Baa but it is only used for gardens. The other option is to put down a bore about 6 kilometres for town.

Cr Bates identified the possibility of a joint project – Private Public Partnership (PPP) – for the supply of water on Crown land at Boggabri.

3. What are the current social and economic issues facing Narrabri?

Cr Bates identified the current social and economic issues:

- Availability of land for housing – this is an issue in Narrabri.
- Finding skilled workers will be a big issue – how will we address it?
- Narrabri is flood prone (in the middle of doing an LEP at the moment) and this needs to be taken into account when planning for new housing.
- The housing market is steadily going up – it is fairly expensive.
- Narrabri is a strong community with few social problems. There is a need for extra police sometimes (problems come up from Moree).
- Employment is good – skills shortage a problem – nurses etc.
- Cotton has done quite well, the all round economy is strong and this project will build our strength further.

4. What are the opportunities and constraints from your point of view from the proposed new mine (Narrabri Coal Resource)?

Trucks on the road wouldn't be an issue – they will come straight off the highway and onto private land. The coal loader will be situated on the property they are mining on. We are pushing for a flashing light crossing of the rail track because it is currently dangerous at the road crossing where the mine entrance is.

5. What opportunities are there for the mining company to contribute to the local community?

Some of the possible opportunities identified by Cr Bates were:

- Joint venture on water supply to Baan Baa.
- Skills training. Very difficult to train yourself on the off-chance that you will get a job – the commitment to employing locals must be there. TAFE in Narrabri (Peter Smith) is worth commending.

6. What issues do you think new employees will face (e.g. accommodation)? Do you have any recommendations to address identified issues?

Finding accommodation will be an issue. Plans are coming along for Boggabri since we last spoke [East Boggabri Coal Mine SIA May 2005]. We are exploring subdivisions to the West of Boggabri – 5 acre lots. Water would be dams – electricity not a problem.

7. What issues do you think local people will have (e.g. trucks, amenity, and new jobs)? Do you have any recommendations to address identified issues?

Baan Baa School is six km from the mine site and due to be closed at the end of 2005. It is 30 km by school bus to Narrabri. It is far more likely that miners with families will settle in Narrabri because of the facilities and services there.

Gunnedah has been let down a lot of times – there have been plans for mines before. They need some good economic development. Narrabri however is doing very well. Narrabri does their homework and plans carefully for developments such as these and we reap the benefits.

Doctors shouldn't be an issue. Generally people can get to a doctor the same day or the next day. Boggabri is very fortunate in that it has 2 doctors (husband and wife). However the books are closed except to locals.

Bill Birch, Narrabri Council Economic Development Officer

Mr Birch welcomed the growth in mining for the area and made the following points.

- Baan Baa – very few people would want to live there anyway – it is too small and doesn't have the services.
- Most people would want to live in Narrabri – it is not a huge distance to travel every day to this particular site.
- Narrabri is a go ahead place – this is emphasised now that mines are starting up especially. There are a couple of brand new housing developments, one in its second stage. A number of houses around the town are available. It could easily accommodate 80 employees at this point in time. Land is available. There are also lots of houses to renovate.
- Up to 4 hectare lots are available for under \$100,000.
- We have an airport – this is an asset for a growing community and is attractive to workers relocating here.
- Narrabri is also “upgrading” its image. We are changing Council logo – this goes with promoting local industry and to industries outside the Shire. We are making use of Newsletters as well.

- A whole lot of energy and planning is going into economic development. Council has recently made a new appointment of Alice Cole – Community Development Worker. This shows our commitment to community services and facilities.⁴
- DSRD (Department of State and Regional Development) funding has been obtained for a business expansion / retention plan.
- Stand-out growth areas: nothing specifically – the area has been very successful in wheat, cotton, sorghum. Some people have started wineries, olives – boutique agriculture that would also attract tourism.
- Narrabri has historically ridden out weather situations because it is on top of a huge aquifer. Cotton farmers have good access to a major water supply.
- We want to get a portion of industrial land – just outside Narrabri. We are right in-between the Newell and Kamilaroi Hwys (north/south and east/west connector highways).
- Supply services would be welcome at Boggabri. [Council need a list of potential new businesses related to mining]

Suggestions for community contributions / benefits:

- Keep open communication between Council and the Mining Company – use them as a bench mark for the area. Use the mining company as a promotional tool and an attractor for some of the types of industry Council is trying to attract.
- Training and Skills Gap – talk to Peter Smith (TAFE) about training opportunities.
- The NSW Gov't have decided to wind up saw milling and forestry activity – this has seen the loss of about 60 jobs – a body of labour is sitting there at this point in time waiting to be utilised.

Services and Facilities:

- There are 7 doctors and a hospital in Narrabri – we are well served in the medical area.
- There is a theatre with live shows and an art gallery.
- There are also lots of sporting and rugby fields.
- We have lakes and natural beauty / mountains behind town
- We have all the banks and building societies available in most towns
- Woolworths have just opened a new store in Narrabri – doubled the size of the existing store. It is a stand alone store at the end of the main street. It is acting as an attractor for other business.

⁴ Ms Cole is currently working in Council in another position and was contacted for this research. She was not in a position to make comments at this time as she had yet to take up her position as Community Development Officer.

In the pipeline:

- There is talk of putting an inland rail that will come through Gunnedah – and go through Narrabri and arc across to Gladstone in Qld. Still on the drawing board but a very desirable project for us.
- The Namoi is sitting on coal that is “gold” and on monumental amounts of natural gas. High quality gas (potentially could supply NSW at current use rates for in excess of 50 years) – capability of bringing organisations that are very energy reliant. A number of these things are long term things.
- Coal fits with the economic development direction of the area. It is crucial. It can be a benchmark industry for our Shire. We need diversification to even out some of the ebbs and flows in the economy. Coal represents diversification.
- Small business sector: it is part of the equation as well. The Area Consultative Committee is holding seminars with home-based businesses.
- On Dec 1st we have a workshop here that indicates the direction we are heading: Making e-business Work for You Workshop (DSRD, Austrade and Council)
- There is scope to develop child minding and childcare / nurseries / aged care – small business would be great.
- Ultimately we would like to get to a population of 20,000 by 2020. Currently we are just over 14,000.

Peter Smith, Narrabri TAFE

Again a question and answer format was used for ease of interview completion. Mr Smith was able to answer questions as a key person for TAFE in the region and also from his perspective as an involved local citizen serving on a variety of committees relating to the Arts and sport.

1. Are you aware of the project? [proposal described]

Yes – it’s been in the paper. We know about it.

2. What are the current skills and training issues facing the Narrabri area?

Our section is commissioning a new engineering shop in anticipation that mining is coming. We are recruiting top-level staff from Newcastle University and BHP.

(Peter is a leader in plastic welding in Australia). 85% of pipes in mines are plastic now. New legislation says welders must be certified. Narrabri is the centre of plastic welding – we are internationally recognised. We are expecting to see an increase in students seeking certification and we have the capacity to meet this demand.

TAFE has capacity – but the problem is getting kids into blue collar-trades. Most students in the area go off to university and don’t take trade training. There is enormous opportunity to promote engineering and related trades as attractive to young people. There are some indicators that the situation is changing:

- 35 kids have come to do welding in 2005 – this is the best numbers in 10 years. It has to do with mining promotion, and career's advisors support.

Cotton has been shrinking in terms of employees, because of technology (there was a recent Land newspaper article on this issue).

Rural workers may make the shift from agriculture to mining, but this creates new jobs in the rural sector – new workers go into rural / agriculture. Miners are multi-skilled.

Existing skills: there are some at a high level and some skills at a training level. Some people with skills have moved away from the area for work and would like to get back here. This may provide an opportunity for some local people to get home.

There is a growth in traineeships (as evidenced through the local TAFE's own network of employers) – this growth is generally coming from local firms that are tendering for contract work with mining.

TAFE is now providing high-level engineering training and this will continue and grow.

It was Mr Smith's view that workers will be sourced for new mines from Moree, Wee Waa, Gunnedah, and all across the Narrabri shire.

Narrabri is a steady shire, Gunnedah struggles more than Narrabri.

3. What are the current issues facing TAFE and the delivery of education in the area?

Tamworth has a downturn in fitting and machining – it has a capacity to pick up work from the mines. We have capacity for plant mechanics etc.

TAFE is pretty strong in the area; we are innovative and go-ahead.

TAFE Narrabri is a centre for Inventors and we have IP development centre.

We are introducing a new training package next year on competitive manufacturing. Our goal is to make sub contractors competitive.

4. What are the opportunities and constraints from your point of view from the proposed new mine (Narrabri Coal Project)?

TAFE IT is very strong. Unemployment is below the national average. We are in a very strong position to benefit from this proposal.

In terms of our new gas projects we have no problems – gas pipeline is going very well. We have the capacity to deliver locally, both in terms of education and in terms of broader facilities and services.

Narrabri is very self-contained in terms of community services. The cultural centre that has just been built is a social hub for the town. Our Innovation Conferences are held there.

5. What opportunities are there for the mining company to contribute to the local community (particularly the education and employment sectors)?

There are two key opportunities for contribution that the Mining Company may wish to consider:

- Contribution to a heated swimming pool with hydro therapy. This has happened in Muswellbrook and would be welcomed here.
- TAFE business incubator proposal. Mining could support this: CAD design / high tech / mechanical and electrical engineering. Mr Smith also kindly supplied information about the proposed Innovation Centre which appears at **Appendix 2**.

Interview with Viv Fouracre – Principal, Baan Baa School

Interview questions were e-mailed to Ms Fouracre for her consideration prior to the interview. Ms Fouracre has been living in Baan Baa for the last 4 years. Ms Fouracre confirmed that the school would be closing at the end of 2005.

1. Are you aware of the project?

Yes.

2. What are the current social and economic issues facing Baan Baa?

Baan Baa is a quiet little community. It could do better economically with more people, but by and large there are no major issues facing this area. People are serviced quite well. Mostly services are sourced from Boggabri and Narrabri. There is a good little hospital in Boggabri and doctors, we have access to dentists, childcare and all the services we need. There are ample sporting facilities and clubs for young people in Boggabri, Narrabri and Gunnedah.

3. What are the current issues facing the school community?

The school is to close at the end of this year (2005). While it is good for a small community to have a school it is important that there are enough students for there to be quality interactions to support the learning environment. Baan Baa had got to a stage where there were not enough students be certain the best learning in the classroom was taking place. School children from Baan Baa will now go to Boggabri.

There are excellent schools in Narrabri and Boggabri – plenty on offer in terms of education, sport and culture.

Education has been provided for 120 years in Baan Baa. The closure of the school will be under review for 18 months. So if there is population surge in the next 18 months there is a possibility that the school could be re-opened. After 18 months when the decision is finalised it is unlikely that there will be a school at Baan Baa again. We would need enough numbers to make it educationally viable.

Schools do offer stability for a small community. They offer the major social events of the year; such as a ball. Schools are also a centre of community development. Boggabri will now continue this function for Baan Baa; it is not all that far for students to travel and it should work well.

4. What are the opportunities and constraints from your point of view from the proposed new mine (Narrabri Coal Resource)?

Increased trains may be a noise issue. (Ms Fouracre is a resident of Baan Baa). We have trains coming through town day and night during the wheat season – we are used to it. We don't need the added noise of bells at a rail crossing every time a train goes through. The speed limit of trains coming through town should be 60 – 80 km per hour the same as cars – this is a more sensible way to go than lights or boom gates. During wheat season trains go day and night.

The new mine might increase a bit of trade at the pub which would be good.

The lack of water means that people won't settle in Baan Baa. If water comes on it would be different but we understand from Council that it will be cost prohibitive, especially for the small rate base in the area. A small number of workers may appreciate the Baan Baa lifestyle and want to settle here, but the bulk will live in Narrabri or Boggabri and some may even come from places like Tamworth.

5. What opportunities are there for the mining company to contribute to the local community (particularly the local school)?

Ms Fouracre identified a number of opportunities for the mine to be involved in the local community:

- Assisting with the town water supply
- Joint venturing with TAFE to encourage education and economic development (business incubator or innovation centre)

6. What issues do you think new employees will face (e.g. accommodation)? Do you have any recommendations to address identified issues?

There are cheap blocks in Baan Baa. Shopping is good. There are major stores (Coles, Woolworths etc) in Narrabri and Gunnedah. Really the area has everything it needs.

Interview with Rod and Juline Young – NSW Farmers Association

Key Insights spoke with Rod and Juline Young. Rod is an Executive Councillor of the NSW Farmers Association. Mr. and Mrs. Young were given a brief description of the proposal, and were asked about any possible social and economic issues that the proposal may create. A number of points were raised, and these are listed below:\.

- Mr. and Mrs. Young identified that the number of underground mining proposals in the area were a concern to farmers. People in the area are worried about adverse environmental effects of the mine, which will impact upon farming.
- Mine subsidence is an issue which concerns many people in the region.
- Underground mining activity may damage the aquifers in the area. These are essential for agriculture.
- There is a danger in putting short term gain, in the form of a mine, ahead of a long-term, sustainable industry such as agriculture.
- It is hard to understand Government reasoning. They have recently made decisions which effectively cripple the timber industry, but they seem keen on mines which may have just as adverse an environmental effect.
- Effective public consultation is essential.
- The operation of coal mines poses economic and health threats to nearby agricultural operations. Pollution in the form of coal dust may compromise produce quality standards. The pollution may also pose health threats for local farming families, especially infants.

This page has intentionally been left blank

Appendix 4

“An Introduction to the Narrabri Coal Project” Community Newsletter

(No. of pages excluding this page = 6)

This page has intentionally been left blank

Appendix 4 “An introduction to the Narrabri Coal Project” Community Newsletter



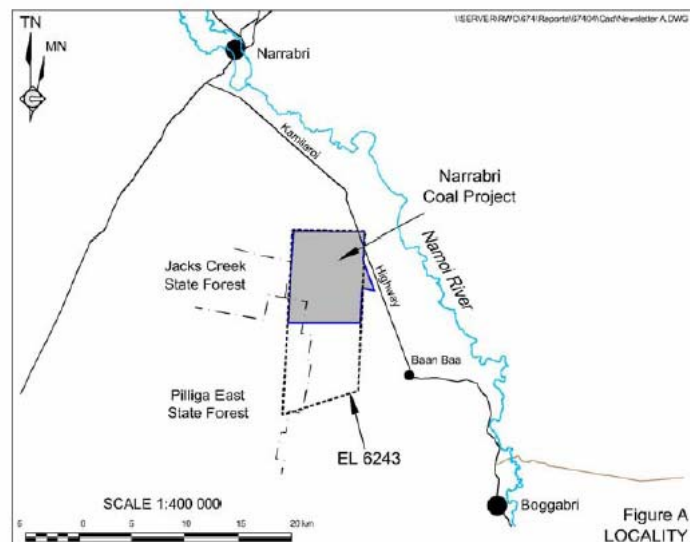
An Introduction to the Narrabri Coal Project

Narrabri Coal Pty Ltd (the Company) has been exploration drilling on a coal deposit located approximately 25km south of Narrabri and 5km north of Baan Baa (Figure A) for the past 18 months. This deposit is located entirely within the boundaries of Exploration Lease 6243, held by the Company.

Following the initial encouraging results, the Company began the process to evaluate a feasibility study and design an underground coal mine to mine the Hoskisson Coal Seam in that area. This project has been named the Narrabri Coal Project.

This newsletter has been produced to ensure that all neighbouring residents and community in the local area are informed of:

- the process that is being followed with respect to the environmental assessment and determination of the planning application;
- the broad design of the Narrabri Coal Project;
- the status of mine planning and the environmental investigations being undertaken as part of the environmental assessment process; and
- how residents and members of the surrounding communities can comment on the project or obtain further information.



Inside this issue:

An Introduction to the Narrabri Coal Project	1
Planning Approval Process	2
Environmental Impact Assessment Process	3
The Narrabri Coal Project	3
What Stage are We Up To?	5
Specialist Consultant Studies	5
Community Consultation	6
Indicative Timing	6

*Keeping you informed
of a proposed
underground coal mine
development in your
local area*

Planning Approval Process

All coal mines are classified as a Major Project under the 2005 *State Environmental Protection Policy (Major Projects)*. As such, the Narrabri Coal Project is to be assessed in accordance with the Part 3A *Environmental Planning and Assessment Act 1979* process. A summary of this approvals process is explained below.

1. A planning application and Project Description Report has been submitted to the Department of Planning requesting that the project be assessed as a Major Project. Once this application has been accepted, the project must be advertised in the local paper. Notification of the Narrabri Coal Project was advertised in the *Namoi Valley Independent* (5 January 2006) and *The Courier (Narrabri)* (3 January 2006).
2. A Planning Focus Meeting was held (29 September 2005) involving all relevant government authorities. The project was described and the site inspected.
3. Following the Planning Focus Meeting, the government authorities provided the Department of Planning with the issues that they require to be covered through the environmental assessment process. The Department of Planning then collated these issues and provided them to the Company as Director-General's Requirements, dated 6 January 2006.
4. The Company has used these Director-General's Requirements as a guide to the environmental assessment process. The outcome of this process will be an Environmental Assessment report that details the project, the existing environment and the operational and management safeguards that would be implemented to minimise any predicted impacts. Any residual impacts predicted following the implementation of all management and design safeguards will also be documented.



5. A draft of the Environmental Assessment report will be submitted to the Department of Planning for their review. Any comments or criticisms the Department may have with the draft will be provided to the Company and they will have the opportunity to amend these issues before the final report is submitted.

6. Final Environmental Assessment will be submitted to the Department of Planning.



7. The project will be advertised and available for public review at a number of locations throughout the local area (for example, Narrabri Shire Council chambers and Boggabri library) for a period of 30 days. During this 30 day period, any interested person may make a submission to the Department of Planning in relation to the project.
8. The Department of Planning may request a response to submissions from the Company.
9. Following receipt of the response to the public submissions, the Department of Planning will assess the project in relation to the information provided in the Environmental Assessment report, the issues raised in submissions and input from other government agencies and local Councils and provide the Minister with an assessment report. The Minister then either approves or refuses the project. If approved, the planning approval would generally include a number of conditions that must be complied with during the life of the operation.

*"The Minister either
approves or refuses the
project."*

Environmental Assessment Process

1. The environmental aspects that could potentially constrain the project have been identified (through the Director-General's Requirements and desktop assessment of the Project Site) and specialist consultant studies commissioned to investigate those aspects.
2. The first stage of the specialist consultant studies is to investigate the constraints that the environment could pose on the project. This stage has been completed.
3. The project was then preliminarily designed to avoid constraints where possible.
4. The specialist consultants are currently continuing their assessments using the preliminary project design as a basis for their impact assessment. This is an iterative process as the project design will be refined in response to the impact predictions to further reduce predicted impacts where possible.
5. The result of the specialist consultant studies will be compiled into the Environmental Assessment report.

The Narrabri Coal Project

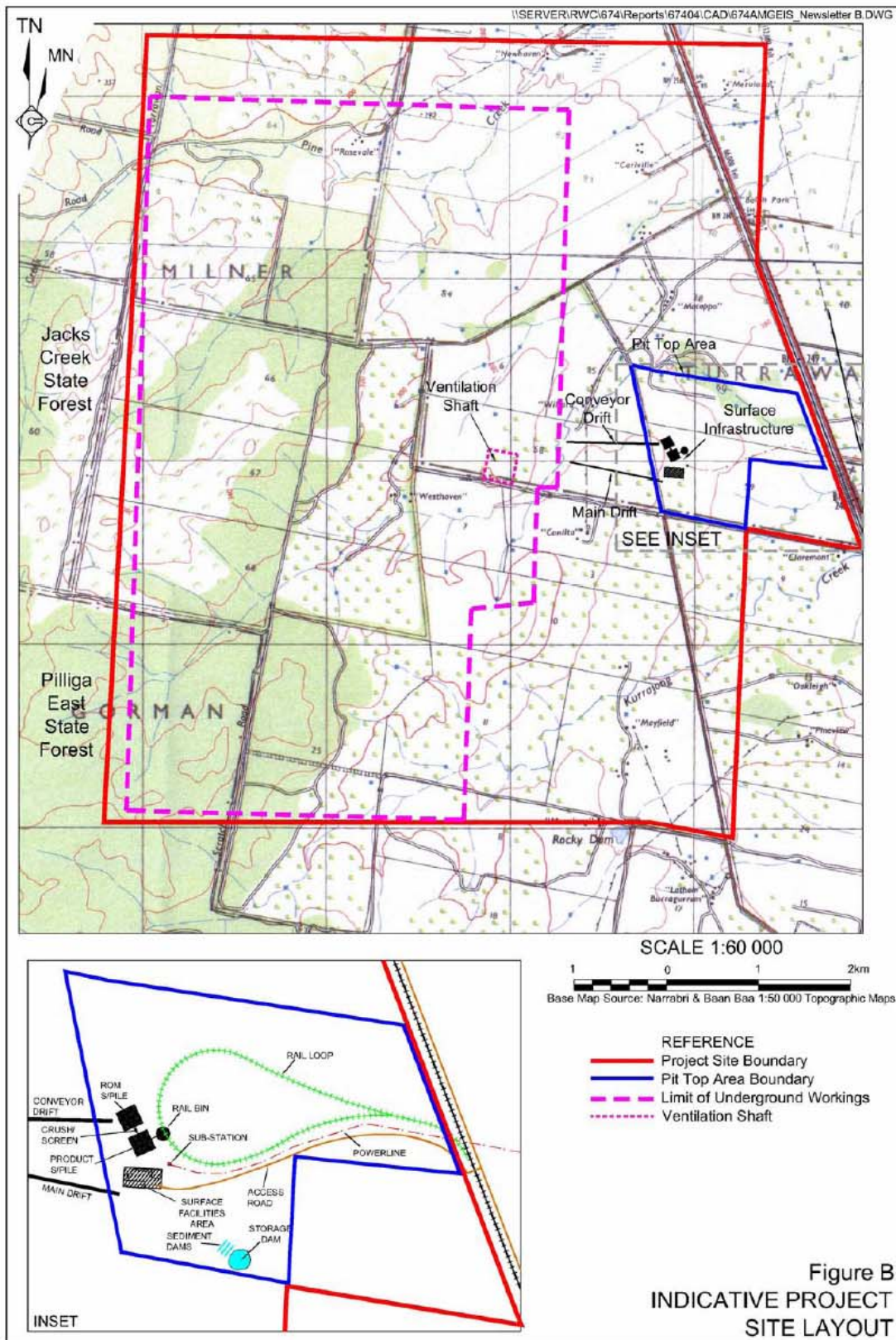
The Narrabri Coal Project is an underground coal mine targeting the coal resources of the Hoskisson Coal Seam. The project involves the following basic processes.

- Establishing two small surface box cuts to provide portals for two drifts to intersect the Hoskisson Coal Seam from the surface.
- Establishment of surface infrastructure including a workshop, offices, ablutions, site access road, coal crushing and stockpiling area and rail loop.
- Developmental underground mining of coal using continuous miners at a maximum rate of approximately 1.8M tonnes per annum.
- Conveying the coal to the surface stockpiles via conveyor belt where it will be crushed and stockpiled.
- Loading of the stockpiled coal onto trains via a load-out bin and rail loop off the existing adjacent rail line for transport to Newcastle.

The underground mining with continuous miner has been designed in such a way that surface subsidence would be less than 20mm.

Important components of the project include the following and these are illustrated on **Figure B**.

- Surface disturbance would be generally limited to a Pit Top Area encompassing the portals for the main access drift and the conveyor drift, the offices and amenity buildings, workshop, coal stockpiles and crushing plant, the rail loop and train load out facility and water management structures.
- The other small area of surface disturbance would be for the ventilation shaft and fan, likely to be located within a disused borrow pit area.
- The site would be accessed via the existing access road intersecting with the adjacent Kamilaroi Highway.
- The project is anticipated to employ approximately 100 people on a full time basis.



What Stage Are We Up To?

The Company has commissioned RW Corkery & Co Pty Limited, an environmental consulting firm, to assist them to manage the environmental impact assessment process and prepare the Environmental Assessment. A number of specialist consultants have subsequently been commissioned and have identified initial constraints to the project posed by the environment. The Company has then completed the preliminary design of the project and the specialist consultants are currently in the process of undertaking their impact assessments based on that preliminary design. As described in Step 4 of the Environmental Impact Assessment Process, the design will be modified and refined in response to the impacts predicted

"(Narrabri Coal Pty Ltd) has commissioned RW Corkery & Co. Pty Limited to prepare the Environmental Assessment"



Specialist Consultant Studies

Eight specialist environmental investigations have been commissioned and are currently completing their impact assessments. Each of the principal investigations is listed below together with a brief statement about the status of the assessments.

Groundwater: An investigation of the existing groundwater environment and potential impact of the proposed mine is currently being undertaken. This investigation includes field work associated with groundwater quality monitoring and strata permeability testing.

Noise and Vibration: A noise and vibration assessment, assuming low background levels, is underway to identify the potential for noise and vibration to impact on the surrounding residences.

Surface Water: The field assessment for the surface water assessment has been completed and the impact assessment is underway. The focus of the surface water assessment is to manage any water dewatered from the underground mine and to appropriately manage any

surface water runoff from the Pit Top Area that may contain sediment from disturbed areas.

Air Quality: Modelling of dust emissions and an assessment of combustion emissions is currently being undertaken to identify any potential impact on surrounding residences.

Ecology: A field assessment has been completed over the areas of potential disturbance and the impact assessment is currently underway. This assessment includes all aspects of flora and fauna on the Project Site.

Aboriginal Heritage: An Aboriginal heritage field assessment has been completed and the impact assessment is currently being completed.

Soils and Land Capability: The field soils and land capability assessment will be undertaken in the week commencing the 6 February in the areas of proposed surface disturbance. Following the interpretation of the field results, the impact assessment will be completed.



All investigations are being undertaken by independent and qualified professionals with additional investigations on traffic, visual amenity, economics and land use to be undertaken by R.W. Corkery & Co. Pty. Limited and the Company.

Community Consultation

To date, the Company has undertaken consultation with the prior landowners of the Pit Top Area, the Company has subsequently purchased the land, and a number of the surrounding land owners. A specialist social assessment consultant has been commissioned and has undertaken consultation with the Council and a number of business within Narrabri to determine potential impact on the town's services and infrastructure. RW Corkery & Co Pty Limited and the Company have also undertaken consultation with various government agencies.

It is planned to undertake broader community consultation, this newsletter being the initiation of this plan. It is understood, however, that the biggest concern for the surrounding land owners and local communities is the potential impact on them – a question which we cannot answer completely until the specialist consultants have completed their impact assessments and the project design has been refined. Once the specialist consultants have completed their impact assessments, there will be further consultation to provide additional information in the form of meetings with individual landowners and community representatives and distribution of a further newsletter.

Indicative Timing

The planning application has been submitted and the Planning Focus Meeting held. Specialist consultant studies are underway and it is anticipated that the draft Environmental Assessment report will be submitted to the Department of Planning in the second quarter of 2006, with determination of the application expected in the fourth quarter of 2006. If approved, site establishment and the underground construction phase would commence in early 2007 and would last for approximately 12 months. As such, it is anticipated that mining would not commence until late 2007 / early 2008.

The submission of the Environmental Assessment report in the second quarter of 2006 would provide for the public exhibition period of the document to be in either the second or third quarter of 2006.

Further Information

The Company will continue to provide information to the local residents and community as it becomes available. Should you wish to discuss the project in the meantime, please do not hesitate to contact either Chris Burgess, Area Manager of Narrabri Coal Pty Ltd on (02) 6742 4337, or Kim Ferguson, Senior Environmental Consultant of RW Corkery & Co Pty Limited on (02) 6362 5411.

NARRABRI COAL PROJECT

Narrabri Coal Pty Limited
P.O. Box 600
GUNNEDAH NSW 2380
Phone: 02-6742 4337
Fax: 02-6742 3607

R.W. Corkery & Co. Pty Limited
P.O. Box 80
ORANGE NSW 2800
Phone: 02-6362 5411
Fax: 02-6362 3622

Appendix 5

Surrounding Landowner Consultation Log – Narrabri Coal Project

(No. of pages excluding this page = 3)

This page has intentionally been left blank

Appendix 5 Surrounding Landowner Consultation Log – Narrabri Coal Project

DATE	SURROUNDING LANDOWNER		ISSUES RAISED
	NAME	PROPERTY	
24/3/2004	Alan Grumley	Mayfield	Preliminary discussion.
5/4/2004	Alan Grumley	Mayfield	General discussion on proposal – nothing specific.
5/4/2005	David Hudson	Yarranabee	Preliminary discussion – he has been included with Idemitsu and understands things.
6/4/2004	G. Clarke	Longsight	Preliminary discussion
6/4/2004	M. Lennox	Kurrajong	Preliminary discussion
6/4/2004	S. Chappell	Merrilong	Her only concern at this time is whether the mine will affect her water supply.
6/4/2004	Tom Newby	NSW Forests	Re: Access to forests to drill
13/4/2004	Geoff Scutt	Mattopo	Keen on proposal – is willing to sell us land if we need it.
13/4/2004	Ron Cooke	Barton Hedge	Preliminary discussion – generally indicated support.
19/4/2004	Peter Lennox	Willara	General discussion – would like information on water if we find any.
19/4/2004	Joe White	Greylands	Preliminary visit.
20/4/2004	David Hudson	Yarranabee	Check ownership of adjoining properties.
20/4/2004 to 17/5/2004	Various people not in EL but nearby		General discussion on proposal.
18/5/2004	M. McLeod	Claremont	Discuss proposal generally
4/6/2004	Various Village People	Baan Baa Village	General discussion – all are or seem to be in favour.
22/6/2004	J. McLeod	Claremont	Discuss drilling and the need to rent a shed for storage of core samples.
28/6/2004	Various people	Outside of EL but felt the need to keep them informed.	General discussion on the proposal.
29/6/2004	J. McLeod	Claremont	Discussion on access agreement for drilling – Chris Burgess also present.
5/7/2004	Ron Cooke	Barton Hedge	Discuss access agreements.
5/7/2004	Peter Lennox	Willara	Discuss access agreements.
5/7/2004	Mark Lennox	Kurrajong	Discuss access agreements.
14/7/2004	Alan Grumley	Mayfield	Discuss access agreements.

DATE	SURROUNDING LANDOWNER		ISSUES RAISED
	NAME	PROPERTY	
21/7/2004	Various	EL	Pick up signed agreements.
28/9/2004	Mr Di Santi	No name	Discuss access agreements and proposal generally.
21/10/2004	Various	EL	General discussion with interested people
1/11/2004	A. Webb	Turrabaa	Preliminary discussion on proposal – no problems – his wife is not well.
17/12/2004	A. Grumley	Darjeeung	Visit drill sites on Mayfield
17/12/2004	J. Beckett	Mayfield	Visit drill sites on Mayfield
<i>From this time until May 2005 efforts were concentrated on East Boggabri and Werris Creek – started back talking to EL people in May 2005</i>			
16/5/2005	M. Bish	Kamilaroi Highway	Access agreements.
18/5/2005	M. Bish	Kamilaroi Highway	Sign agreement.
15/8/2005	D. Hudson	Yarrabee	General discussions.
15/8/2005	G. Clarke	Springfield	General discussions.
16/8/2005	G. Clarke	Springfield	General discussions.
23/8/2005	J. McLeod	Claremont	Preliminary discussions on purchase.
31/8/2005	J. McLeod	Claremont	Further discussions on purchase.
2/9/2005	G. Scutt	Mattopo	Discussions on purchase.
14/9/2005	G. Scutt	Mattopo	Discussions on purchase.
16/9/2005	Various	Various	General discussions.
26/9/2005	D. Hudson	Yarrabee	General discussions.
26/9/2005	G. Clarke	Yarrabee	General discussions.
27/9/2005	A. Webb	Turrabaa	Discussion on purchase.
4/10/2005	A. Webb	Turrabaa	Discussion on purchase.
10/10/2005	A. Webb	Turrabaa	Discussion on purchase.
10/10/2005	Jeff McLoughlin	Naroo	General discussion.
17/10/2005	G. Clarke	Longsight	Discussions on driving.
3/11/2005	A. Webb	Turrabaa	Negotiation re: purchase.
9/1/2006	P. Lennox	Willara	Re: meeting.
19/1/2006	Girken Bates	Ascot	Discussed project and its potential benefits.
19/1/2006	Peter and Sandra Lennox	Willara	Meeting to discuss their concerns re: land values.
Various Dates	Over the time access agreements were obtained from absentee landowners (one resident in Antarctica) including Mr F. DeSanti, Mr D. Grncarski, Mr A. Locastro, Mr P. Mato, Mr Alan Day (Antarctica) and State Forests.		

DATE	SURROUNDING LANDOWNER		ISSUES RAISED
	NAME	PROPERTY	
13/2/2006	Various	Various	3 day visit to EL – handed Newsletter to all who were at home in EL including many outside area. Visited Baan Baa to talk to residents.
2/3/2006	John Collins	High Range	Discuss and advise on his property. He is a long way from the mine (5km)
23/3/2006	Mark Lennox	Kurrajong	R. Corkery and K. Ferguson (both of RW Corkery & co Pty Ltd) attended meeting with Mark Lennox and Terry Hogan. Issues raised included visual amenity, noise, dust, property values and the impact on their proposed farmstay “Celtic Caves”.
<p>Since March 2006, a representative of the Proponent has maintained contact with a number of residents within and surrounding the Project Site providing updates on the status of the Proponent’s plans for the development of the mine.</p>			

This page has intentionally been left blank

Appendix 6

Coverage of Environmental Assessment Requirements and Environmental Issues in the Socio-Economic Assessment

(No. of pages excluding this page = 1)

(To be completed prior to submission of the final EA)

This page has intentionally been left blank

Coverage of Environmental Assessment Requirements and Environmental Issues in the Socio-Economic Assessment

Page 1 of 1

ENVIRONMENTAL REQUIREMENTS RAISED BY THE DIRECTOR-GENERAL RELATING TO SOCIO-ECONOMIC (06.01.06)		
		Relevant Section(s)
Key Assessment Requirements , namely: <ul style="list-style-type: none"> • <i>Socio-Economic</i> - Assess the following potential impacts of the project (including any potential cumulative impacts), and describe what measures would be implemented to avoid, minimise, mitigate, offset, manage and/or monitor these impacts. Particularly with regard to any increased demand for infrastructure and services in the region. 		4, 7
ENVIRONMENTAL REQUIREMENTS RAISED BY GOVERNMENT AGENCIES RELATING SOCIO-ECONOMIC		
Government Agency	Paraphrased Requirement	Relevant Section(s)
Narrabri Shire Council (19 December 2005)	The cumulative socio-economic impacts that the development shall have on the townships within the shire. Community consultation to be undertaken in relation to the mine and the impacts on socio-demographic of these communities.	4, 5, 7

This page has intentionally been left blank