



Whitehaven Coal Mining Pty Ltd

ABN: 65 086 426 253

***Environmental Monitoring
Program***

for the

Rocglen Coal Mine



Whitehaven Coal Mining Pty Ltd

ABN: 65 086 426 253

Environmental Monitoring Program

for the

Rocglen Coal Mine

Prepared by: Whitehaven Coal Mining Pty Ltd
PO Box 600
Gunnedah NSW 2380

Tel: (02) 6742 4337
Fax: (02) 6742 3607
Email: dyoung@whitehaven.net.au

Document Control*					
Edition	Revision	Comment	Author	Date	Authorised by:
1	Rev.0	Initial Document	T Thompson	13/1/2009	D Young
	Rev.1	Amendments to monitoring locations and requirements	J Scealy	June 2009	D Young

*To be revised at least every 2 years or following relevant significant changes

This Copyright is included for the protection of this document

COPYRIGHT

© Whitehaven Coal Mining Pty Ltd, 2009

All intellectual property and copyright reserved.

Apart from any fair dealing for the purpose of private study, research, criticism or review, as permitted under the Copyright Act, 1968, no part of this report may be reproduced, transmitted, stored in a retrieval system or adapted in any form or by any means (electronic, mechanical, photocopying, recording or otherwise) without written permission. Enquiries should be addressed to Whitehaven Coal Mining Pty Ltd.

CONTENTS

Acronyms Used Throughout This Program	iv
1 Introduction	1
2 Requirements of PA_0198	3
3 Environmental Monitoring Program.....	4

TABLES

Table 1 - Environmental Monitoring Program.....	7
---	---

FIGURES

Figure 1 - Rocglen Coal Mine Location	2
Figure 2 - Environmental Monitoring Locations (North).....	5
Figure 3 - Environmental Monitoring Locations (South)	6

BOXES

Box 1 - EMonP - Related Consent Conditions	3
--	---

ACRONYMS USED THROUGHOUT THIS PROGRAM

AEMR	-	Annual Environmental Management Report
CHPP	-	Coal Handling and Preparation Plant
DECC	-	Department of Environment and Climate Change
DoP	-	Department of Planning
EC	-	Electrical Conductivity
EMonP	-	Environmental Monitoring Program
PA	-	Project Approval
TOC	-	Total Organic Carbon
TSS	-	Total Suspended Solids
WCMPL	-	Whitehaven Coal Mining Pty Ltd

1 INTRODUCTION

The Rocglen Coal Mine (the mine), previously known as the Belmont Coal Project, is located approximately 25km north of Gunnedah and 23km south east of Boggabri (Figure 1). The mine is being developed by Whitehaven Coal Mining Pty Ltd (WCMPL), a subsidiary company of Whitehaven Coal Limited, as an open cut mining operation.

The mine lies within a 366ha area covered by a mining lease ("the mine site"), with a limit of open cut mining contained entirely within 114.1ha of this lease

Project Approval (PA) 06_0198 was granted for the mine by the Minister for Planning on 15th April 2008. The approved mine will involve the following activities or features:

- Coal mining by open cut and auger mining methods over an area of approximately 114 ha;
- Crushing, screening and stockpiling of coal;
- Installation and/or construction of Project Site infrastructure and services (eg. power supply, water management structures and internal access roads);
- Upgrading previously closed roads and construction of purpose built roads on Proponent-owned properties as part of a coal transport route;
- Transportation of coal from the mine via a purpose built road to the Whitehaven Coal Handling and Preparation Plant (CHPP) and Rail Loading Facility at the Whitehaven Siding; and
- Final rehabilitation of the areas of disturbance within the mine site following completion of the Project.

It is recognised that the operation of the mine has the potential to impact on various aspects of the local environment on and beyond the boundaries of the mine site. In order to manage these potential impacts, and in compliance with *Condition 5(2)* of Project Approval (PA) 06_0198, the following Environmental Monitoring Program (EMonP) has been prepared. This EMonP represents a consolidated summary of all monitoring activity to be undertaken for the life of the mine.

Section 2 of the EMonP presents the relevant conditions of PA 06_0198 and Section 3, which is presented in tabular form, describes the timing, location and responsibility for all monitoring to be undertaken over the life of the mine.

The monitoring requirements of the mine may change as the mine proceeds and as such, this document will be reviewed and updated each year in conjunction with the preparation of an Annual Environmental Management Report (AEMR).

The EMonP has been prepared with reference to relevant legislation and guidelines and is consistent with the commitments in the following documentation which was prepared prior to the granting of development consent.

- Environmental Assessment - specifically Section 4; and
- Specialist Consultant Studies Compendium – Volumes 1 and 2.

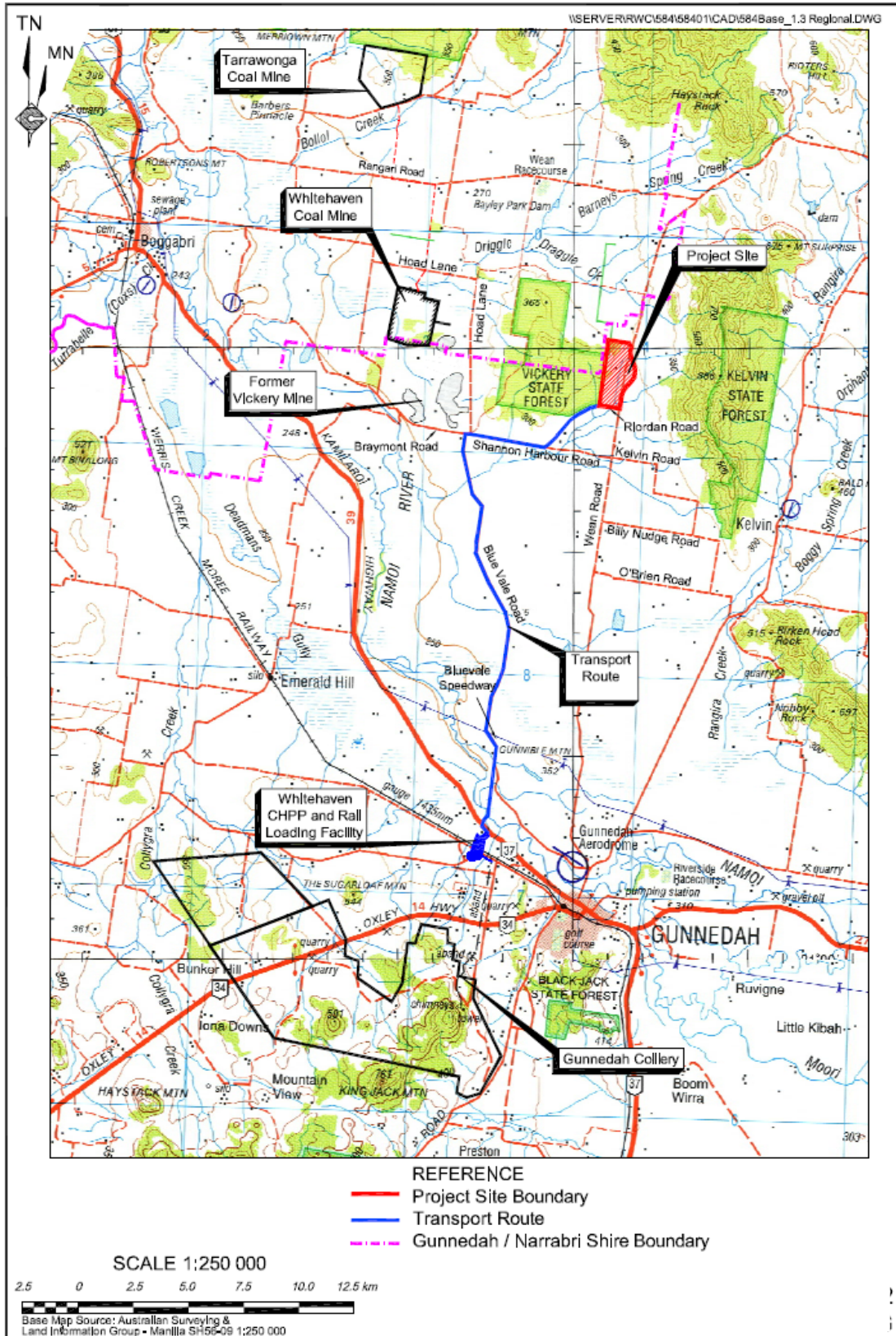


Figure 1 - Rocglen Coal Mine Location

2 REQUIREMENTS OF PA_0198

PA 06_0198 incorporates one condition relating to the EMonP. This condition is presented in Box 1. It is noted that a number of conditions arose from the DECC's recommendations to the DoP and as such will be consistent with conditions of an Environment Protection Licence for the mine.

<p style="text-align: center;">SCHEDULE 5 ENVIRONMENTAL MANAGEMENT, MONITORING, AUDITING AND REPORTING</p> <p><i>Note: This schedule should be read in conjunction with 18 and 19 of the Statement of Commitments</i></p> <p>ENVIRONMENTAL MONITORING PROGRAM</p> <p>2. The Proponent shall prepare and implement an Environmental Monitoring Program for the project to the satisfaction of the Director-General. This program must be submitted to the Director-General by the end of September 2008 and consolidate the various monitoring requirements in schedule 3 of this approval into a single document.</p> <p style="text-align: right;">Box 1 - EMonP - Related Consent Conditions</p>
--

Consultation, with relevant government agencies was undertaken as part of the preparation of the monitoring programs from which the EMonP provides a consolidated summary. These monitoring programs have been approved by the Director-General of the Department of Planning.

3 ENVIRONMENTAL MONITORING PROGRAM

Presented in tabular form, the program consolidates monitoring commitments made in the following documents:

- Aboriginal and Cultural Heritage Management Plan;
- Air Quality Monitoring Program;
- Blasting Monitoring Program;
- Greenhouse and Energy Efficiency Plan (as known as Energy Savings Action Plan);
- Landscape Management Plan;
- Noise Monitoring Program;
- Road Noise Management Plan; and
- Site Water Management Plan

For each environmental aspect, information is provided on relevant project approval conditions, monitoring locations, responsibilities and schedules. Some Management Plans have not yet been finalised. The EMonP will be updated following finalisation of Plans and subsequent reviews.

Figure 2 and Figure 3 present the various monitoring locations on, and surrounding, the Rocglen Coal Mine.

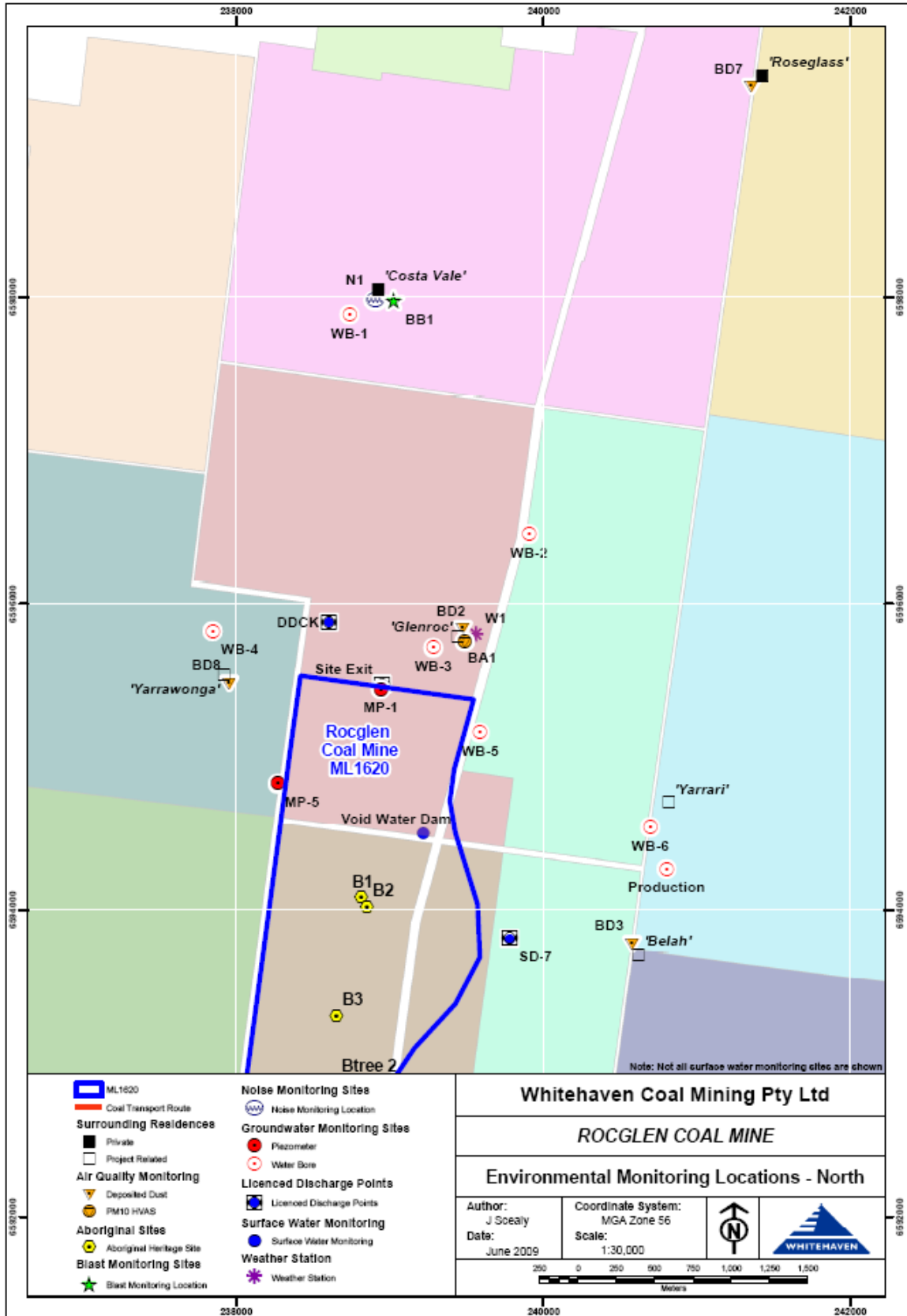


Figure 2 - Environmental Monitoring Locations (North)

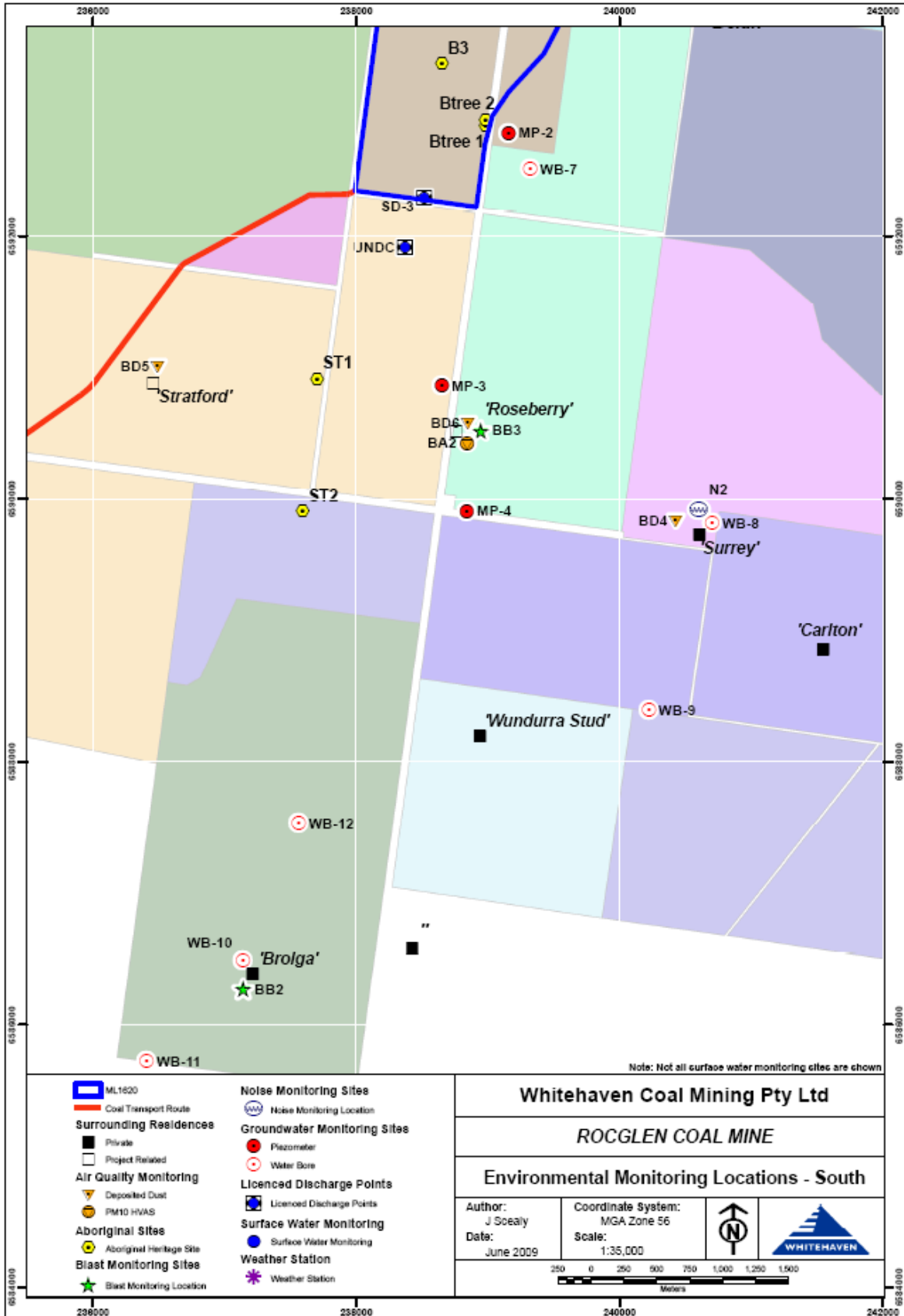


Figure 3 - Environmental Monitoring Locations (South)

Table 1 - Environmental Monitoring Program

		Conditional Requirement ¹	Monitoring Locations ²	By	Jan	Feb	Mar	Apr	May	Jun	Jul	Aug	Sep	Oct	Nov	Dec
NOISE	Operational Noise Attended	3(10)	N1 & N2	Spectrum Acoustic			*			*			*			*
	Operational Noise Unattended	3(10)	N1 & N2	Spectrum Acoustic			*			*			*			*
	Equipment Noise	-		Spectrum Acoustic	SPL of mobile equipment monitored upon request by Mine Manager											
BLASTING	Ground Vibration	3(22)	BB-1 to BB-3	Orica	Blast Monitoring will be undertaken at sites BB-1 and BB-3 for all blasts and as required at BB-2.											
	Air Overpressure	3(22)														
AIR QUALITY	Dust	3(24)	BD-2 to BD-8	WCMLP	*	*	*	*	*	*	*	*	*	*	*	*
	PM10	3(24)	BA-1 & BA-2	WCMLP	Once every 6 days in accordance with DECC state schedule for PM10 monitoring											

¹ Project Approval PA 06_0198 issued by the Minister for Planning, 15th April 2008.

² See Figures 2 and 3.

		Conditional Requirement ¹	Monitoring Locations ²	By	Jan	Feb	Mar	Apr	May	Jun	Jul	Aug	Sep	Oct	Nov	Dec
EROSION AND SEDIMENT CONTROL		3(4)	All water management and erosion and sediment control structures ³	WC MPL	*	*	*	*	*	*	*	*	*	*	*	*
GROUND WATER	Water Quality (Full analysis)	3(6)	MP1-5, WB1-13	WC MPL					*						*	
	SWL, EC, pH	3(6)				*		*		*		*		*		*
SURFACE WATER	Wet Weather Discharge (TSS, TOC, Grease & Oil, pH, EC)	3(5)	SD3 & Northern Boundary Site Exit	WC MPL	As soon as practicable after overflow commences and not more than 12 hours after the commencement of overflow											
	Water Quality (TSS, TOC, Grease & Oil, pH, EC) Off Site	3(5)	DDCK, UNDC, SD7	WC MPL	Quarterly at a time when there is flow and as soon as practicable after overflow commences and not more than 12 hours after the commencement of overflow.											
	Water Quality (TSS, Grease & Oil, pH, EC) On Site	3(5)	All project site storage dams and mining void sump(s)	WC MPL			*			*			*			*
	Water Quality (Representative metals and ions) On Site	3(5)	All project site storage dams and mining void sump(s)	WC MPL												*

³ Monthly inspection or following rainfall of >25mm/24 hours

		Conditional Requirement ¹	Monitoring Locations ²	By	Jan	Feb	Mar	Apr	May	Jun	Jul	Aug	Sep	Oct	Nov	Dec
WEATHER		3(25)	W1	WC MPL	Frequency – continuous Average period – 1 hourly for rainfall, 15 minutes for remaining parameters											
FLORA AND FAUNA	Flora and Fauna	3(30)	TBA	TBA	TBA											
CULTURAL HERITAGE	Ground Disturbance Activities		Mine site Soil Strip Areas	Gunida Gunyah AC, Min Min AC	Representatives invited to monitor all ground disturbing activities											
GREENHOUSE GAS EMISSIONS and ENERGY EFFICIENCY		3(47)	Mine site	WC MPL	Monthly internal reports on fuel and energy consumption, and actions initiated to reduce emissions and increase energy efficiency to be reported in AEMR and Greenhouse and Energy Efficiency Plan											
WASTE MANAGEMENT	Waste Minimisation	3(48)	Mine site	NCPL	Quarterly internal reports on volumes of each waste stream and actions initiated to reduce waste volume and improve recycling practice to be reported in AEMR.											