

An aerial photograph showing a coal mine facility in the foreground, a residential community in the middle ground, and agricultural fields in the background. The mine site includes several large buildings, a parking lot, and a road. The community consists of numerous houses and streets. The surrounding area is a mix of green fields and brown soil.

# Werris Creek Coal Mine

# Community Consultative Committee

22 AUGUST 2006



*Aerial 16 August 05*





*Aerial 23 March 06*





# *Mine Water Storage*





# *Water Management*





# *Rail Siding*





# *Rehabilitation*





## *Progressive Activities*

- *Mine access road complete 13/01/06*
- *Stage 2 commenced 2 weeks later*
- *Demolition of Narrawolga complete following heritage report to Council*
- *Purchased Hillview property*



## *Progressive Activities (cont)*

- *Production to 31 July 2006*
- *Area cleared 98 Ha*
- *Topsoil/subsoil removed 1.1 Mbcm*
- *Overburden removed 6.5 Mbcm*
- *Coal mined 1.03 Mtonnes*



# *Personnel*

## **Werris Creek Coal**

### **Crushing, hauling & train loading**

<b>Tamworth</b>	<b>4</b>
<b>Curlewis</b>	<b>2</b>
<b>Quirindi</b>	<b>1</b>
<b>Werris Creek</b>	<b>4</b>

### **Casuals**

<b>Werris Creek</b>	<b>2</b>
<b>Total</b>	<b>13</b>



# *Personnel*

## **Roche Mining**

### **Mining Operations**

### **Employees at 30 Jul 06**

<b>Tamworth</b>	<b>14</b>
<b>Quirindi</b>	<b>14</b>
<b>Werris Creek</b>	<b>2</b>
<b>Gunnedah</b>	<b>2</b>
<b>Other</b>	<b>5</b>
<b>Total</b>	<b>37</b>



# *Complaints*



# *Complaints*

*07 Excessive dust, North*

*08 Lights pointed at residence, South*

*09 Noise, North*

*10 Noise, North*

*11 Rail crossing & mine dust, LPSC*

*12 Blast 24/07/2006, North*



## *Complaints (cont)*

*13 Noise & lights, East*



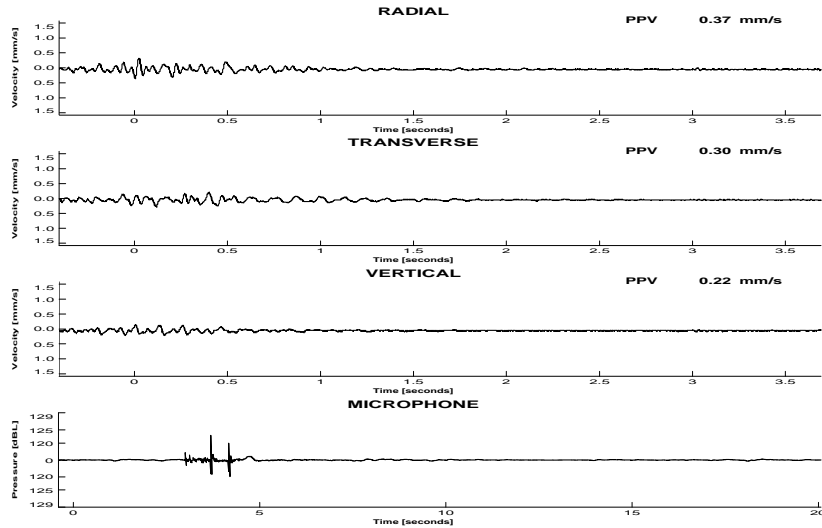
*Blast Overpressure Exceedance*

*Reported to EPA 04/07/06*



# Werris Creek

Time: 13:13:38 Monitor Location: Hillview  
 Date: 04 Jul 2006 Blast No/Id: WC66\_sh63



## Blast Overpressure 04 July 2006

Blast overpressure criteria:  
 Less than 115dB(L) 95% of blasts  
 Not to exceed 120dB(L)

### BLAST SUMMARY

Pattern Type	: Staggered	Max. Inst. Charge	: 240kgs
Pattern Size (m)	: 4.5 x 5	Explosive (Type & Weight)	
Designed Tonnage	: 5708 kgs	a) TM830 @ 1.2 g/cc	
Bench Height (m)	: 1.8 – 7 mtrs	b)	
Number of Rows	: 10	c)	
Number of Holes	: 192	Delay Type - Electronic	
Blasthole Dia. (mm)	: 171mm	- Average Interval (ms):	9.42 ms
Stemming (m)	: 1.8 – 3.0 mtrs	- Duration (ms)	: 1800 ms
Sub Drill	: 0		

Peak Vector Sum Velocity : 0.40 mm/s  
 Peak Overpressure : 123.3 dB(L)

Comments & Observations

Monitoring conducted by: .....Jim Drane....Roche Blasting Services.....  
 Roche Blasting Services

Checked by: .....

TM Serial Number: 3041

Last Calibration: 08 Apr 2006

*Blast Monitoring*



# *Monitoring Results*



- *Blast Monitoring, each blast*
- *Deposited Dust, monthly*
- *PM10 Dust Concentration, 6 day cycle*
- *Water Bore Testing, now 3 monthly*
- *Noise Modelling, monthly*



# *The Future*

- *MOP to be modified to reflect variation in rehabilitation timetable*
- *Discussion with Nungaroo LALC and others regarding relocation of Axe Grinding Grooves*
- *On schedule to produce 1.4 Mtpa*



# THANK YOU



Next Meeting: