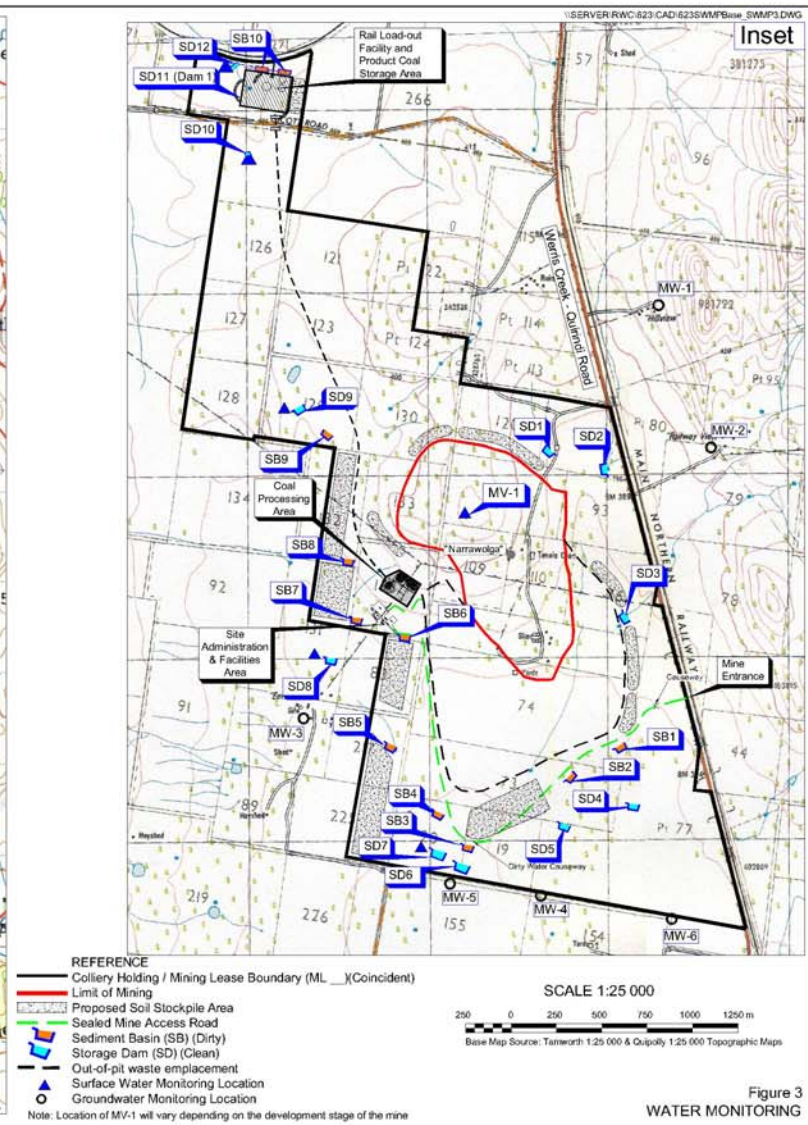
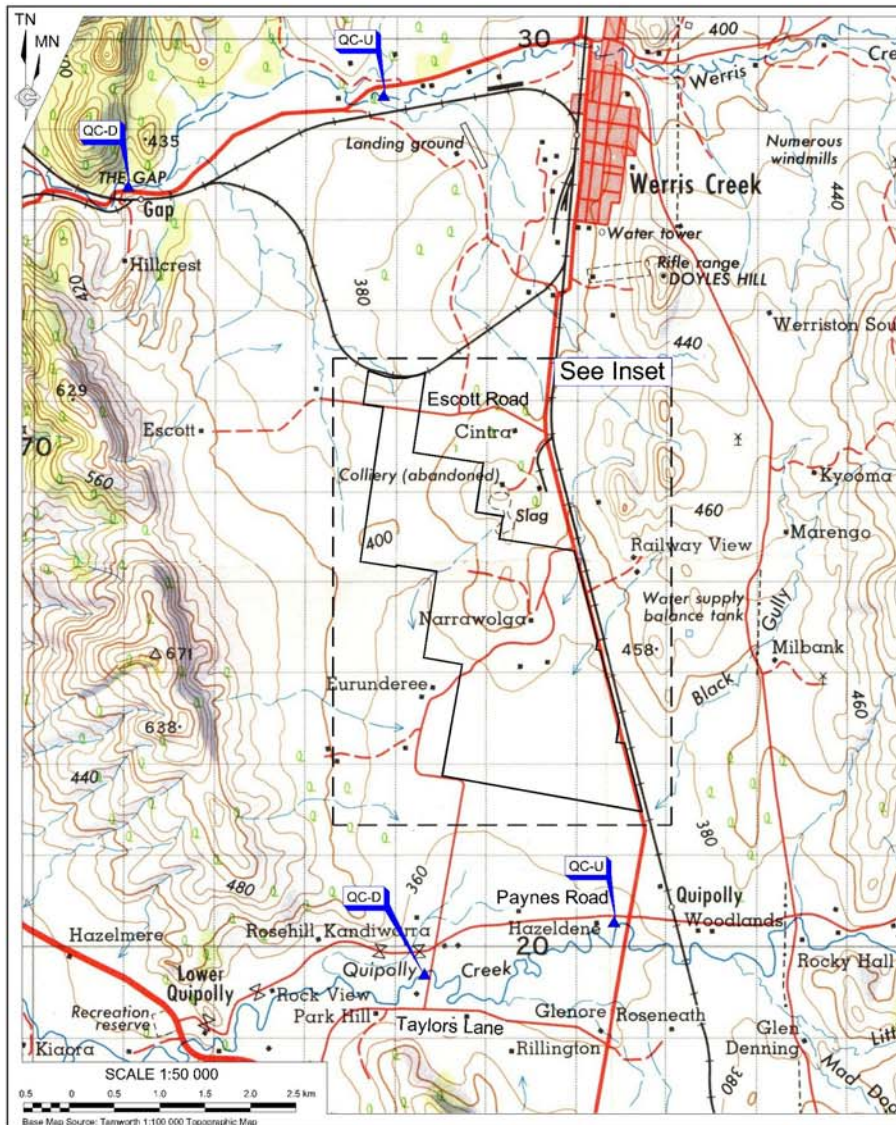


An aerial photograph showing a coal mine site in the foreground, a residential community in the middle ground, and agricultural fields in the background. The mine site includes several large piles of coal, a processing plant, and a road. The community consists of numerous houses and streets. The background features green fields and a road.

Werris Creek Coal Mine

**Community
Consultative
Committee**

13 October 2005



Water Management



Water Management



Looking SW



Water Management



Zuirindi Werris Creek Road



Water Management



Looking SE



Milestones

- *First coal produced – 03/08/05*
- *Stage 1 crushing plant completed*
- *Coal haul road tar sealed – 17/08/05*
- *Roche office facilities completed*



Milestones

- *Train loading bin completed*
- *First train despatched – 01/09/05*
- *Hitachi 1900 excavator commissioned*
- *Roche workshop facilities near complete*



Personnel

Werris Creek Coal

Crushing, hauling & train loading

Tamworth 4

Curlewis 2

Quirindi 1

Werris Creek 1

Casuals

Werris Creek 2



Personnel

Roche Mining

Mining Operations

Employees at 23 Jun 05	New Recruits	Total	
Tamworth	3	2	5
Quirindi	4	5	9
Werris Creek	2	2	4
Gunnedah	3	-	3
Other	3	2	5



Complaints / Inquiries



Complaints

01 Bore Water Level Dropping

02 Highly Turbid Water During Rain

03 Blast 29/07/2005

04 Blast 29/07/2005

05 Blast 29/07/2005

06 Noise reported to EPA



Blast Overpressure Exceedance

Reported to EPA 21/09/05

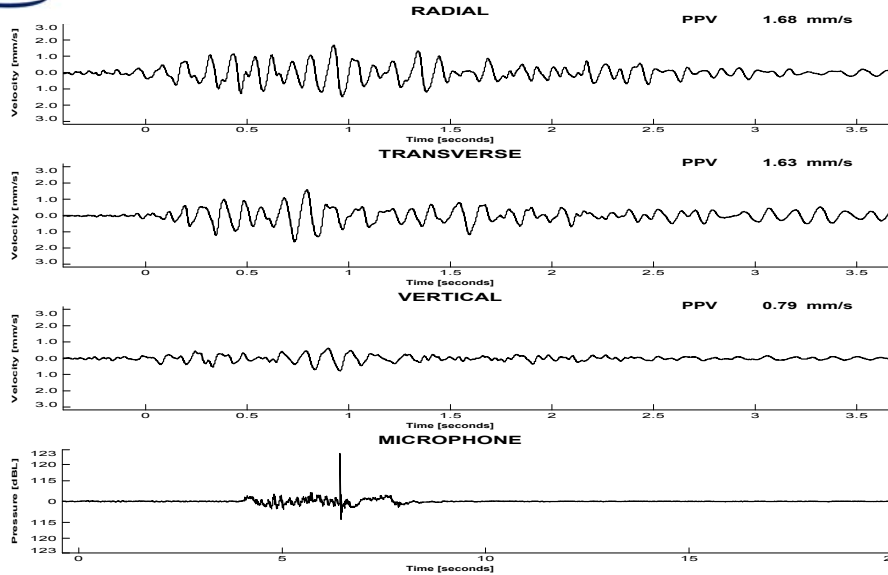


Werris Creek

13:49:07
21 Sep 2005

Monitor Location:
Blast No/Id:

Hillview
WC 15 & WC16



Blast Overpressure

21 Sep 2005

Blast overpressure criteria:

Less than 115dB 95% of blasts

Not to exceed 120dB

BLAST SUMMARY

Pattern Type	: Staggered	Max. Inst. Charge	: 420 kgs
Pattern Size (m)	: 6 x 7.5mtrs	Explosive (Type & Weight)	a)
Designed Tonnage	: 61,563 kgs	b) AnFO at .8	
Bench Height (m)	: 10 - 20 mtrs	c) .	
Number of Rows	: 17	Delay Type - Electronic	
Number of Holes	: 218	- Average Interval (ms):	10ms
Blasthole Dia. (mm)	: 200mm	- Duration (ms) :	2170ms
Stemming (m)	: 4mtrs		
Sub Drill	: 0		

Peak Vector Sum Velocity : 1.81 mm/s
Peak Overpressure : 122.3 dBL

Comments & Observations

.
.
.

Monitoring conducted by:Jim Drane....Roche Blasting Services.....
Roche Blasting Services

Checked by:

TM Serial Number: 3041

Last Calibration: 08 Apr 2005

EL:4.0 Werris Creek\WC Standard.rtf

Werris Creek\Hillview\Hillview - 2005-09-21 13.49.07 - 1.twf

Blast Monitoring



Dept of Planning

Compliance Inspection

22/09/05



Dept of Planning

Section 96 (1a) Application

*Request to vary the Consent to allow a
further 3 months to complete the new access
road*



Monitoring Results



- *Blast Monitoring*
- *Deposited Dust*
- *PM10 Dust Concentration*
- *Water Bore Testing*
- *Noise Modelling*



The Future

- *Acoustic bund completion – 14/10/05*
- *Extension of production hours to 10 pm*
– On completion of bund – 17/10/05
- *Access road completion – 31/01/06*
- *Noise model validation approved - ??*



THANK YOU



Next Meeting: