

# Section 5

## Draft Statement of Commitments

---

---

*This section has been prepared in accordance with the requirements of Part 3A of the Environmental Planning and Assessment Act 1979, and presents a compilation of the actions and initiatives the NMPL commits to implement if the Sunnyside Coal Project is approved. These commitments are designed to effectively manage, mitigate, guide and monitor the Project from initial construction through to full production and eventually rehabilitation of the Project Site.*

*The Environmental Assessment of the Project has identified a range of environmental, social and management outcomes and measures, all required to avoid or reduce the environmental and social impacts of the Project.*

*All parties involved in the design, establishment and operational phases of the Project will be required to undertake their work in accordance with these commitments. The commitments are presented in tabular form (**Table 5.1**) and identify the desired outcome, action and timing of commitments.*

***Figure 5.1** (on Page 5-23) provides the layout of the Project Site and **Figure 5.2** (on Page 5-25) records the locations of surrounding residences and monitoring locations relevant to these commitments. These are intentionally fold-out plans to assist readers when reviewing this section.*

---

---

This page has intentionally been left blank

**Table 5.1**  
**Draft Statement of Commitments for Site Operations and Management**

Page 1 of 19

| Desired Outcome   | Action   | Timing                              |
|---|--|-------------------------------------|
| <b>1. General Project Development</b>   |  |                                     |
| Operate the Project to ensure that all component activities are undertaken in a responsible and proactive manner. | 1.1 All activities will be subject to the Mining, Rehabilitation and Environmental Management Process managed by the Department of Primary Industries – Mineral Resources.   | Ongoing.                            |
|   | 1.2 Operate the mine with comprehensive systems to manage and monitor groundwater, surface water, noise, blasting, air quality, visibility, Aboriginal heritage, flora, fauna, traffic, visual and socio-economic aspects. | Ongoing.                            |
|   | 1.3 Apply for a Mining Lease with boundaries generally coincident with the Project Site.   | Late 2007.                          |
|   | 1.4 Obtain all necessary certifications for all buildings constructed or relocated on site from Gunnedah Shire Council.  | Mid 2008.                           |
|   | 1.5 Seek approval from Gunnedah Shire Council to install a septic system on site.  | Prior to Project commencement.      |
|   | 1.6 Undertake all rehabilitation and site decommissioning within 12 months of the end of mining. This would include re-instating Coccooboonah Lane to its pre-mining alignment   | Approximately December 2013.        |
|   | 1.7 Implement management strategies to minimise the likelihood of spontaneous combustion.  | Ongoing.                            |
|   | 1.8 Construct the out-of-pit overburden emplacement in a manner that would ensure the initial emplaced overburden would form an acoustic barrier around the operating area within the emplacement.                         | During Year 1 of mining operations. |
|   | 1.9 Undertake a geological and geotechnical assessment prior to any auger mining to confirm it is both safe and economic to proceed.   | During mining operations.           |
|   | 1.10 Direct surface runoff water around the final void.  | Ongoing.                            |
|   | 1.11 Potable water would be transported from Gunnedah to supplement rainwater collected off site buildings and stored in tanks. Ablutions water would be transported from Gunnedah.  | Ongoing.                            |

**Table 5.1 (Cont'd)**  
**Draft Statement of Commitments for Site Operations and Management**

Page 2 of 19

| Desired Outcome  | Action                          | Timing   |  |
|--|---------------------------------|--|--|
| <b>1. General Project Development</b>  |                                 |  |  |
| Operate the Project to ensure that all component activities are undertaken in a responsible and proactive manner (Cont'd).   | 1.12                            | Operational water will initially be supplied from water within the Gunnedah Coal Mine N° 5 Entry underground workings. This will eventually augment the pit groundwater inflow and water drawn from the various sedimentation and fresh water dams that would form part of the site surface water management system. | Ongoing.                                   |
|  | 1.13                            | Power will be predominantly generated on site by diesel powered generators.  | Ongoing.                                   |
|  | 1.14                            | There will be capacity to store 68 000L of diesel and 10 000L of oil on site in self-bunded fuel tanks.  | Ongoing.                                   |
|  | 1.15                            | An Environment Protection Licence to be applied for.   | Mid 2008.                                  |
|  | 1.16                            | RTA approval to be sought for proposed roadworks along the Oxley Highway.  | Mid 2008.                                  |
|  | 1.17                            | Road Construction Permit to be applied for from Gunnedah Shire Council prior to modifications and other roadworks associated with re-alignment of Coccooboonah Lane and public road intersections along the coal transport route.  | Mid 2008.                                  |
|  | 1.18                            | A Water Licence be applied for and granted before installation and operation of a water bore into the Gunnedah N° 5 Colliery workings.   | Mid 2008.                                  |
|  | 1.19                            | A licence be applied and granted from WorkCover for the installation of explosives magazine within the Project Site area.  | Mid 2008.                                  |
|  | <b>2. Traffic and Transport</b> |  |  |
| All motorists travel safely to and from the Project Site with minimal disruption to traffic on Coccooboonah Lane, Oxley Highway, Blackjack Road, Quia Road and Torrens Road. | 2.1                             | Ensure all trucks transporting coal are well maintained and that drivers act in a courteous manner at all times.   | Ongoing.                                   |
|  | 2.2                             | Avoid loading trucks that are unroadworthy or not carrying covers.   | Ongoing.                                   |
|  | 2.3                             | Ensure all truck drivers operate in accordance with a Transport Policy and Code of Conduct.  | Ongoing.                                   |
|  | 2.4                             | Contact all potentially affected landowners and surrounding residents prior to initial construction and the commencement of any upgrading works to inform / discuss the proposed works.  | Prior to initial construction and ongoing. |

**Table 5.1 (Cont'd)**  
**Draft Statement of Commitments for Site Operations and Management**

Page 3 of 19

| Desired Outcome   | Action   | Timing   |   |
|---|--|--|---|
| <b>2. Traffic and Transport (Cont'd)</b>  |  |  |   |
| All motorists travel safely to and from the Project Site with minimal disruption to traffic on Coochooboonah Lane, Oxley Highway, Blackjack Road, Quia Road and Torrens Road.<br>(Cont'd) | 2.5  | Liaise routinely with local residents to ensure their satisfaction with all aspects of changed traffic conditions.   | Ongoing.  |
|   | 2.6  | Relocate part of Coochooboonah Lane to avoid disturbing remnant Koala habitat. RTA requested changes will result in approximately three trees being removed.   | Prior to mining commencing.   |
|   | 2.7  | Upgrade parts of the proposed coal transport route beyond Coochooboonah Lane and various intersections to improve traffic flow and safety aspects.   | Prior to coal transportation.   |
|   | 2.8  | The truck fleet will consist of a mix of standard 28t capacity semi-trailers and 40t capacity B-Double vehicles.   | Ongoing.  |
|   | 2.9  | Develop a Road Maintenance and Capital Improvement Agreement with Gunnedah Shire Council.  | Prior to mining commencing.   |
|   | 2.10   | Erect appropriate road signage.  | Prior to coal transportation.   |
|   | 2.11   | Ensure all employees and contractors are regularly informed about the safe driving requirements to and from the Project Site.  | Ongoing.  |
|   | 2.12   | Transport all oversize loads with all necessary permits.   | During transport of oversize loads (primarily during site establishment). |
|   | 2.13   | Erect a blast board at the Project Site entrance and update at least 24 hours prior to each blast.   | Prior to initial blast.   |
|   | <b>3. Operating Hours – Site Establishment</b> |  |   |
| Management of construction activities in accordance with the approved operating hours.  | 3.1  | Undertake on-site construction within the hours of: 7.00am to 6.00pm / Monday to Friday, 7.00am to 4.00pm / Saturday.  | During site establishment.  |
|   | 3.2  | Undertake coal transport route construction within the hours of: 7:00am to 6:00pm / Monday to Friday with the contingency to extend to 8.00pm if light and seasonal conditions permit, 7.00am to 4.00pm / Saturday | During site establishment.  |

**Table 5.1 (Cont'd)**  
**Draft Statement of Commitments for Site Operations and Management**

| Desired Outcome  | Action | Timing  |  |
|--|--------|---|--|
| <b>4. Operating Hours – Operations</b>   |        |   |  |
| Management of operating hours of work in accordance with the approved consent conditions                   | 4.1    | Undertake vegetation clearing / soil removal within the hours: 7.00am to 6.00pm Monday to Friday with a contingency to extend operations to 8.00pm if light and seasonal conditions permit. Saturday activity would be between 7.00am and 4.00pm with contingency to extend through to 6.00pm | During vegetation clearing and soil removal.           |
|  | 4.2    | Undertake drilling within the hours: 7.00am to 8.00pm / Monday to Friday and 7.00am to 6.00pm Saturday.   | During drilling.                                       |
|  | 4.3    | Undertake blasting within the hours: 10.00am to 5.00pm / Monday to Friday and 10.00am to 2.00pm Saturday  | During blasting.                                       |
|  | 4.4    | Undertake overburden / interburden removal and placement within the hours 7.00am to 10.00pm Monday to Friday and 7.00am to 4.00pm Saturday.   | During overburden / interburden removal and placement. |
|  | 4.5    | Undertake internal transport of coal product to ROM stockpile within the hours 7.00am to 10.00pm Monday to Friday and 7.00am to 4.00pm Saturday.  | During internal transport of coal.                     |
|  | 4.6    | Undertake on-site processing within the hours 7.00am to 10.00pm Monday to Friday and 7.00am to 6.00pm Saturday.   | Ongoing.   |
|  | 4.7    | Undertake coal transport to Whitehaven CHPP and Rail Loading Facility within the hours 7.00am to 6.00pm Monday to Friday with contingency to extend to 8.00pm light and seasonal conditions permitting.   | During coal transport.                                 |
|  | 4.8    | Undertake maintenance within the hours: 24 hours over 7 days.   | During maintenance.                                    |
|  | 4.9    | Undertake rehabilitation within the hours: 7.00am to 6.00pm / Monday to Friday and 7.00am to 4.00pm Saturday.   | During rehabilitation.                                 |
| <b>5. Waste Management</b>   |        |   |  |
| Minimisation of general waste creation and maximisation of recycling wherever possible.                    | 5.1    | Place all paper and general wastes originating from the Site Facilities Area, together with routine maintenance consumables from the daily servicing of equipment in garbage bins located adjacent to the various buildings.  | Continuous.  |
| Minimisation of the potential risk of environmental impact due to waste creation, storage and/or disposal. | 5.2    | Collect general waste bins and place contents in large waste skip bins positioned adjacent to the heavy vehicle maintenance building to await removal by licensed contractor.   | Daily - wastebins. As required – skip bins.            |

**Table 5.1 (Cont'd)**  
**Draft Statement of Commitments for Site Operations and Management**

| Desired Outcome   | Action  | Timing  |   |
|---|---|---|---|
| <b>5. Waste Management (Cont'd)</b>   |   |   |   |
| Minimisation of the potential risk of environmental impact due to waste creation, storage and/or disposal. (Cont'd) | 5.3   | Collect industrial waste regularly.   | Fortnightly.  |
|   | 5.4   | Collect waste oils and grease and pump to bulk storage tanks.   | As required.  |
|   | 5.5   | Store waste oils and grease at the maintenance workshop for collection by a licensed waste recycling contractor.                    | Bi-monthly.   |
|   | 5.6   | Collect all parts and packaging and transfer to the maintenance workshop for disposal or recycling.                                 | As required.  |
|   | 5.7   | Install adequate toilet and ablution facilities within the mine facilities area for the site workforce and visitors.                | During site establishment.  |
|   | 5.8   | Direct sewage to a bio-cycle (or equivalent system) with effluent irrigation to land – to be approved by Gunnedah Shire Council.    | Ongoing following installation.   |
|   | 5.9   | Store potentially hydrocarbon-contaminated water in the oil/water separator for regular removal from site by a licensed contractor. | As required.  |
|   | 5.10  | Assemble all proposed waste management practices in a Waste Management Plan.  | Within 6 months of the start of site establishment.                             |
|   | <b>6. Safety and Security</b>   |   |   |
|   | To protect the safety of employees (including contractors), visitors to the mine, the public as well as local land owners and land users. | 6.1   | Ensure compliance with statutory regulations and maintain awareness of changes. |
| 6.2   |   | Eliminate or control safety and health hazards in the work environment.   | Ongoing.  |
| 6.3   |   | Provide relevant occupational health and safe working practices and job training.   | Ongoing.  |
| 6.4   |   | Conduct regular safety meetings and provide open forum for input from all employees.  | Ongoing.  |
| 6.5   |   | Provide effective emergency arrangements for all employees and general public protection.   | Ongoing.  |
| 6.6   |   | Undertake regular employee assessment and counselling if required.  | Ongoing.  |
| 6.7   |   | Ensure all contractors adopt the NMPL's policy objectives and maintain safety standards at all times while working on the premises. | Ongoing.  |

**Table 5.1 (Cont'd)**  
**Draft Statement of Commitments for Site Operations and Management**

Page 6 of 19

| Desired Outcome  | Action | Timing  |                                      |
|--|--------|---|--------------------------------------|
| <b>6. Safety and Security (Cont'd)</b>   |        |   |                                      |
| To protect the safety of employees (including contractors), visitors to the mine, the public as well as local land owners and land users. (Cont'd) | 6.8    | Develop an Occupational Health and Safety Management System and Major Hazard Management System to be approved by the Chief Inspector of Coal Mines.                         | Prior to mining and Ongoing.         |
|  | 6.9    | Erect and maintain all boundary fencing encompassing the Project Site.  | During site establishment.           |
|  | 6.10   | Install lockable mine entrance gate.  | During site establishment.           |
|  | 6.11   | Erect appropriate security fencing signs at key locations in and around the Project Site.   | During site establishment.           |
|  | 6.12   | Erect advisory truck traffic warning signage prior to intersection of private sections of the proposed coal transport route along the re-aligned Coccoofoonah Lane.         | During site establishment.           |
|  | 6.13   | Ensure all equipment complies with Mine Design Guidelines (MDG15).  | Prior to commencement of operations. |
|  | 6.14   | Submit Mining Operations Plan to the Department of Primary Industries.  | Prior to commencement of operations. |
| <b>7. Groundwater</b>  |        |   |                                      |
| Access to groundwater resources within the N° 5 underground as a supplementary water source for mine operations.                                   | 7.1    | Obtain all necessary approvals and construct a groundwater bore (see <b>Figure 5.1</b> ) to withdraw water collected in the void of the Gunnedah N° 5 underground workings. | During site establishment.           |
| Prevention of groundwater contamination.   | 7.2    | Control dirty or contaminated surface water within surface structures (see Commitments in Section 10).  | Ongoing.                             |
|  | 7.3    | Refuel the mining fleet within designated areas of the Project surface facilities.  | Ongoing.                             |
|  | 7.4    | Undertake all maintenance works requiring the use of oils, greases and lubricants within designated areas of the Project surface facilities.                                | Ongoing.                             |
|  | 7.5    | Direct all water from wash-down areas and workshops, except some mobile equipment to oil / water separators and containment systems.  | Ongoing.                             |
|  | 7.6    | Ensure all storage tanks are either self-bunded tanks or bunded with an impermeable surface and a capacity to contain a minimum 110% of the largest storage tank capacity.  | Prior to mining and Ongoing.         |

**Table 5.1 (Cont'd)**  
**Draft Statement of Commitments for Site Operations and Management**

Page 7 of 19

| Desired Outcome  | Action | Timing   |  |
|--|--------|--|--|
| <b>7. Groundwater (Cont'd)</b>   |        |  |  |
| Prevention of groundwater contamination. (Cont'd)  | 7.7    | Construct two turkey's nest dams for the storage of any surplus open cut pit inflows (rather than direct placement into underground workings).   | Ongoing.   |
|  | 7.8    | Preferentially use water in the two turkey's nest dams for on-site dust suppression (rather than placing water from these dams underground).   | Ongoing.   |
|  | 7.9    | Construct a suitable bore and install appropriate pumping equipment to place diluted pit water (from Turkey's Nest Dam N° 2) into the N° 5 underground workings. (All bores would be licenced by DWE).   | Prior to the completion of construction of Turkey's Nest Dam N° 2.     |
|  | 7.10   | Pump water to the N° 5 underground workings only from the second turkey's nest dam (to ensure only diluted water is placed underground). This would occur in the event of excessive wet weather when the second turkey's nest dam is approaching its capacity. | As required.   |
| Preparation of a contingency plan in the event that the availability or quality of groundwater is reduced for local groundwater users. | 7.11   | Undertake remedial action if the available groundwater for existing groundwater users is reduced by over 15% due to mine activities.   | As required.   |
| Implement a groundwater monitoring program to confirm predictions and to identify emerging issues.                                     | 7.12   | Implement the water monitoring programme outlined in Section 4B.1.6.1 including ongoing review and modification as required.   | Before commencement of Project and ongoing throughout life of Project. |
|  | 7.13   | Develop contingency measures identified to address any impacts identified by monitoring.   | Ongoing.   |
|  | 7.14   | Include relevant data in the Sunnyside Mine Annual Environmental Management Report (AEMR)  | Annually.  |
|  | 7.15   | Prepare a monitoring report at the conclusion of mining to outline changes in the local groundwater system.  | At conclusion of mining.   |
|  | 7.16   | Establish and maintain a coverage of piezometers to the satisfaction of DWE in the vicinity of the open pit and the Project Site.  | Within 12 months after the commencement of mining operations.          |

**Table 5.1 (Cont'd)**  
**Draft Statement of Commitments for Site Operations and Management**

| Desired Outcome  | Action   | Timing  |
|--|--|---|
| <b>8. Noise and Vibration</b>  |  |   |
| All activities are undertaken in such a manner as to reduce the noise level generated and minimise impacts on surrounding landholders and/or residents.                                      | 8.1 Seal the re-aligned Coochooonah Lane and all other upgraded road sections.   | Prior to commencement of coal transportation. |
|  | 8.2 Regularly maintain all roads comprising the proposed coal transport route under a contribution plan with Gunnedah Shire Council.   | Ongoing.                                      |
|  | 8.3 Avoid all noisy activities occurring concurrently during construction particularly before 9.00am when the affects of local inversions may be noticeable.   | During construction.                          |
|  | 8.4 Construct the out-of-pit overburden emplacement to provide an acoustic barrier between the open cut and Non-Project-related residences.  | During emplacement construction in Year 1.    |
|  | 8.5 Construct the amenity bund around the coal processing area to act as an acoustic barrier.  | At commencement of overburden stripping.      |
| Noise generated by site establishment, construction and operational activities does not exceed DECC nominated criteria nor significantly impact on neighbouring landowners and/or residents. | 8.6 Adhere strictly to hours of operation, including transport activities, enforced by Mine Management.  | Ongoing.                                      |
|  | 8.7 Use equipment with lower sound power levels in preference to more noisy equipment.   | Ongoing.                                      |
|  | 8.8 Regularly service all equipment used on site to ensure the power sound levels remain at or below the levels used in the modelling to assess generated noise levels and compliance with the criteria.   | Ongoing.                                      |
|  | 8.9 Ensure that bulldozers operate in first gear when reversing on the out-of-pit emplacement.   | During adverse weather conditions.            |
|  | 8.10 Manage scraper operations to avoid operations during inversion conditions and to reduce the number of scrapers operating from two to one when noise becomes problematic.  | Under inversion conditions or as required.    |
|  | 8.11 Confine operations to lower levels of the in-pit overburden emplacement to mitigate noise exceedances under adverse wind conditions, ie. avoid operations on elevated section of the overburden emplacements during inversions and SSW winds. | Under adverse wind conditions or as required. |

**Table 5.1 (Cont'd)**  
**Draft Statement of Commitments for Site Operations and Management**

| Desired Outcome   | Action | Timing  |  |
|---|--------|---|--|
| <b>8. Noise and Vibration (Cont'd)</b>  |        |   |  |
| Noise generated by site establishment, construction and operational activities does not exceed DECC nominated criteria nor significantly impact on neighbouring landowners and/or residents. (Cont'd) | 8.12   | Fit mid-high frequency broadband beepers to mobile mining equipment, decreasing sound power levels by 2dB(A) to 3dB(A).   | At start of Project.                       |
|   | 8.13   | Ensure the on-site road network is well maintained to limit body noise from empty trucks travelling on internal roads.  | Ongoing.                                   |
|   | 8.14   | Maintain dialogue with neighbours and local community to ensure any concerns over construction, operational or transport noise are addressed.   | Ongoing.                                   |
|   | 8.15   | Establish a noise monitoring program, in consultation with the DECC, prior to the commencement of the Project, designed to initially validate the predictions arising from the modelling and then record noise levels against the Project noise criteria. | Prior to construction.                     |
|   | 8.16   | Document all proposed noise management strategies formally in a Noise Management Plan.  | Prior to construction and mining activity. |
|   | 8.17   | Install a blast monitor at all residences within a 2km radius of the active blasting area to monitor blast parameters.  | Ongoing.                                   |
| Noise generated by road and rail transport activities does not exceed DECC nominated criteria nor significantly impact on neighbouring landowners and/or residents.                                   | 8.18   | Monitor construction noise near "Lilydale" when the realignment of Coocooboonah Lane is being undertaken.   | During construction.                       |
|   | 8.19   | Conduct operational noise monitoring monthly for the first six months of mining operations, reverting to quarterly for the remainder of the year.   | Ongoing.                                   |
|   | 8.20   | Instruct all truck drivers to avoid the use of engine brakes when approaching the Project Site entrance and coal transport route intersections and to be mindful when accelerating.   | During inductions and ongoing.             |
|   | 8.21   | Adhere strictly to approved hours of coal transportation.   | Ongoing.                                   |
| Noise generated by blasting activities does not exceed DECC nominated criteria nor significantly impact on neighbouring landowners and/or residents.  | 8.22   | Use aggregates for blast hole stemming to prevent venting of explosion gases.   | During blasting.<br>Ongoing.               |
|   | 8.23   | Use average size blasts (MIC 960kg) when within the range of 150m to 210m of axe grinding groove (AGGI).  | When mining near axe grinding groove.      |

**Table 5.1 (Cont'd)**  
**Draft Statement of Commitments for Site Operations and Management**

Page 10 of 19

| Desired Outcome   | Action | Timing  |   |
|---|--------|---|---|
| <b>9. Flora and Fauna</b>   |        |   |   |
| Minimisation of long term impact on flora and fauna on and around the Project Site. | 9.1    | Re-align Coochoonah Lane to avoid removal of Koala habitat.   | Prior to off-site coal transportation.                          |
|   | 9.2    | Utilise local tree species in revegetation of disturbed areas with an emphasis on Koala feed trees.   | During rehabilitation.  |
|   | 9.3    | Re-establish a small area of the Endangered ecological community Native Vegetation on Cracking Clay Soils of the Liverpool Plains.  | After Coochoonah Lane is re-established in pre-mining location. |
|   | 9.4    | Undertake clearing so the extent is minimised and consistent with operational requirements.   | Ongoing.  |
|   | 9.5    | Clearly define all areas to be cleared.   | Ongoing.  |
|   | 9.6    | Transfer soil material and biomass removed beyond the first 18 to 24 months of mining directly to an active rehabilitation area, where practicable.   | Ongoing.  |
|   | 9.7    | Undertake progressive rehabilitation of all disturbed areas.  | Ongoing.  |
|   | 9.8    | Control noxious weeds at all times.   | Ongoing.  |
|   | 9.9    | Adopt a strategy to rehabilitate specific areas of the Project Site to native vegetation, create and / or improve habitat corridors on and adjacent to the Project Site, and protect areas of native vegetation from agricultural activities on NMPL land external to the Project Site. | Ongoing.  |
|   | 9.10   | Maintain, expand and / or create several Koala habitat corridors to promote the linkage of remnant vegetation in the local area.  | Ongoing.  |
|   | 9.11   | Conserve the existing native vegetation on the Project Site during the life of the proposal and in the final landform.  | Ongoing.  |
|   | 9.12   | Carry out, where possible, tree removal, especially the mature trees in late spring and early autumn to avoid spring nesting birds and over-wintering bats.   | Ongoing.  |
|   | 9.13   | Undertake inspections of mature trees for nesting birds and roosting bats prior to each clearing campaign where mature tree with hollows are to be removed.   | Prior to clearing.  |
|   | 9.14   | Relocate any nesting and roosting hollows, as well as nests, used by listed threatened species to appropriate locations nearby.   | Prior to clearing.  |

**Table 5.1 (Cont'd)**  
**Draft Statement of Commitments for Site Operations and Management**

| Desired Outcome  | Action | Timing  |   |
|--|--------|---|---|
| <b>9. Flora and Fauna (Cont'd)</b>   |        |   |   |
| Minimisation of long term impact on flora and fauna on and around the Project Site. (Cont'd) | 9.15   | Bury all stumps, branches and tree trunks from felled timber within the overburden emplacements.  | Ongoing.  |
|  | 9.16   | Commence post-mining rehabilitation of the Box Cut area as soon as possible. Re-establish the connectivity of habitat corridor along Coochooboonah Lane. Commence post-mining establishment of the Koala habitat corridors between Coochooboonah Lane and the remnant woodlands south of the Project Site as soon as practicable to re-establish and enhance the connectivity of local Koala habitat corridors. | As early as possible during mining activity.          |
|  | 9.17   | Include a vertebrate pest control program as part of the mining operation and management plan.  | Ongoing.  |
|  | 9.18   | Avoid the clearing of native vegetation along the road shoulders where the proposed coal transport route utilizes public roads.   | Ongoing.  |
| <b>10. Surface Water</b>   |        |   |   |
| Prevention of discharge of dirty, saline or contaminated water from the Project Site.        | 10.1   | Securely store all hydrocarbon products in accordance with the approved Hydrocarbon Management Plan.  | Ongoing.  |
|  | 10.2   | Refuel all of the NMPL's mining fleet within designated areas of the Project surface facilities.  | Ongoing.  |
|  | 10.3   | Direct all water from wash-down areas and workshops to oil/water separators and containment systems.  | Ongoing.  |
|  | 10.4   | Ensure all storage tanks are either self-bunded tanks or bunded with an impermeable surface and have a capacity to contain a minimum 110% of the largest storage tank capacity.   | Ongoing.  |
|  | 10.5   | Construct catchment banks / drains directing sediment-laden water to sediment basins.   | Prior to commencing activities in relevant catchment. |
|  | 10.6   | Maintain groundcover on all land that is not being used for processing facilities, administration / maintenance facilities, roads, mining activities and the overburden emplacement.  | Ongoing.  |

**Table 5.1 (Cont'd)**  
**Draft Statement of Commitments for Site Operations and Management**

| Desired Outcome  | Action   | Timing                   |
|--|--|--------------------------|
| <b>10. Surface Water (Cont'd)</b>  |  |                          |
| Prevention of discharge of dirty, saline or contaminated water from the Project Site. (Cont'd) | 10.7 Add flocculants to dirty water within the sediment basins, if required, to expedite the settlement process.                                   | Ongoing.                 |
|  | 10.8 Implement a monitoring program as outlined in Section 4B.4.6 to enable appropriate auditing and management.                                   | Ongoing.                 |
|  | 10.9 Advise of elevated levels of sediment in water discharged from site.  | Ongoing.                 |
|  | 10.10 Enlarge the sediment basins or construct additional sediment basins, if required.  | As required.<br>Ongoing. |
| Minimisation of erosion and sedimentation.   | 10.11 Construct an additional storage dam downstream, if required. This dam would become the new site discharge point and monitoring location.     | As required.<br>Ongoing. |
|  | 10.12 Implement a 3-phase remedial action plan in the event of a major hydrocarbon spill.  | As required.<br>Ongoing. |
| <b>11. Air Quality</b>   |  |                          |
| Site activities are undertaken without exceeding DECC air quality criteria or goals.           | 11.1 Fence off all land which is not to be disturbed to encourage natural regeneration.  | At start of mining.      |
|  | 11.2 Establish ground cover on disturbed areas and emplacement area as soon as possible.   | Ongoing.                 |
|  | 11.3 Undertake soil stripping at a time when there is sufficient soil moisture to prevent significant lift-off of dust.                            | Ongoing.                 |
|  | 11.4 Avoid stripping soil in periods of high wind.   | Ongoing.                 |
|  | 11.5 Use water application for dust suppression to increase soil moisture should stripping occur during periods of high wind or low soil moisture. | As required.             |
|  | 11.6 Utilise water injection on the drill rigs or alternatively fit them with dust collectors.   | Ongoing.                 |
|  | 11.7 Use aggregates for blast hole stemming to prevent venting of explosion gases.   | Ongoing.                 |
|  | 11.8 Conduct blasting both before the establishment, and after the break up of low-level atmospheric temperature inversions.                       | As required.             |
|  | 11.9 Avoid ripping of softer overburden material during periods of high wind.  | As required.             |

**Table 5.1 (Cont'd)**  
**Draft Statement of Commitments for Site Operations and Management**

| Desired Outcome   | Action  | Timing   |                      |
|---|---|--|----------------------|
| <b>11. Air Quality (Cont'd)</b>   |   |  |                      |
| Site activities are undertaken without exceeding DECC air quality criteria or goals. (Cont'd) | 11.10   | Spray low moisture coal with water prior to excavation to raise moisture content to >6%.   | As required.         |
|   | 11.11   | Minimise clearing ahead of construction activities.  | Ongoing.             |
|   | 11.12   | Water cleared areas regularly during construction activities.  | During construction. |
|   | 11.13   | Minimise clearing ahead of road construction.  | During construction. |
|   | 11.14   | Water active construction areas regularly.   | Ongoing.             |
|   | 11.15   | Restrict truck speeds on roads under construction to <50kph.   | During construction. |
|   | 11.16   | Apply water to the coal at the feed hopper, crusher and all conveyor transfer and discharge points at the rate of approximately 2.0L/t coal processed.           | Ongoing.             |
|   | 11.17   | Temporarily cease operation in the event of protracted dry periods, high winds and significant dust generation and dispersal towards the surrounding residences. | As required.         |
|   | 11.18   | Minimise the extent of clearing / site preparation in advance of mining.   | Ongoing.             |
|   | 11.19   | Clearly define any access or haul roads and restrict vehicles and equipment to those roads.  | Ongoing.             |
|   | 11.20   | Routinely apply water with or without chemical dust suppressants.  | Ongoing.             |
|   | 11.21   | Progressively rehabilitate areas of disturbance including topsoil and subsoil stockpiles.  | Ongoing.             |
|   | 11.22   | Install bund walls and wind breaks as required.  | Ongoing.             |
|   | 11.23   | Regularly water haul roads.  | Ongoing.             |
| 11.24   | Avoid coal being loaded above the truck body sides.   | Ongoing.   |                      |
| 11.25   | Cover all trucks carrying product coal from the mine with approved covers and securely fix the tailgates to prevent windblown dust emission or spillages. | Ongoing.   |                      |
| 11.26   | Fit all earthmoving equipment on-site with exhaust controls which satisfy NSW DECC emission requirements.   | Prior to commencing site activity. Ongoing.  |                      |

**Table 5.1 (Cont'd)**  
**Draft Statement of Commitments for Site Operations and Management**

Page 14 of 19

| Desired Outcome   | Action  | Timing           |
|---|---|------------------|
| <b>11. Air Quality (Cont'd)</b>   |   |                  |
| Site activities are undertaken without exceeding DECC air quality criteria or goals. (Cont'd) | 11.27 Ensure all equipment is properly maintained to ensure no unacceptable exhaust emissions occur and commit to the removal of any vehicle or item of mobile equipment from on-site activities which is observed not to comply with NSW DECC guidelines.  | Ongoing.         |
|   | 11.28 Direct the exhausts of all equipment upwards or to the side so as not to impinge on the ground and cause dust lift-off.   | Ongoing.         |
|   | 11.29 Undertake an air quality monitoring program to demonstrate compliance with the nominated goals. <ul style="list-style-type: none"> <li>• Deposited dust at selected residences and strategic locations surrounding the Project Site.</li> <li>• Continuous wind speed and direction at the Project Site weather station.</li> </ul> Refer Section 4B.5.8. | Ongoing.         |
|   | 11.30 Avoid burning vegetation.   | Ongoing.         |
|   | 11.31 Use water injection or dust collectors during drilling.   | During drilling. |
|   | 11.32 Avoid ripping softer overburden material during periods of high wind.   | Ongoing.         |
|   | 11.33 Establish and maintain dust monitoring program in line with recommended locations.  | Ongoing.         |
|   | 11.34 Install and maintain an automatic weather station within the Project Site.  | Established      |
| <b>12. Aboriginal Heritage</b>  |   |                  |
| Provide appropriate protection to identified Aboriginal artefacts.                            | 12.1 Undertake medium sized blasts when open cut pit is near axe grinding groove.   | As required.     |
|   | 12.2 Cover axe grinding groove with straw bales to prevent possible fly rock damage when blasting is nearby.  | As required.     |
| Minimise potential to impact upon unidentified Aboriginal artefacts.                          | 12.3 Invite Aboriginal monitors to site for all soil stripping and ground disturbance activities. Manage any sites detected in accordance with the relevant acts.   | Ongoing.         |
|   | 12.4 Cease work at any area if further Aboriginal objects are uncovered during the course of the Project, and contact the NSW DECC for advice.  | Ongoing.         |

**Table 5.1 (Cont'd)**  
**Draft Statement of Commitments for Site Operations and Management**

| Desired Outcome  | Action  | Timing                                     |
|--|---|--|
| <b>12. Aboriginal Heritage (Cont'd)</b>  |   |  |
| Employees who are sensitive and respectful of possible identified Aboriginal sites and artefacts.  | 12.5 Conduct a Cultural Heritage Awareness Induction Course for staff, contractors and any heritage monitors working on the Project Site to help raise awareness and ameliorate any impact on heritage sites during site establishment and subsequent mining activities.                                | During induction of employees/contractors. |
| <b>13. Visibility</b>  |   |  |
| Restriction of vantage points of Project activities from neighbouring residences and public roads. | 13.1 Minimise cleared or non-vegetated areas by progressively rehabilitating the Project Site.  | Ongoing.                                   |
|  | 13.2 Design the overburden emplacements to as much as possible, replicate existing topographic features.  | During planning and design.                |
|  | 13.3 Minimise the extent of land disturbance / clearing in advance of mining.   | Ongoing.                                   |
|  | 13.4 Implement air quality controls as identified in Section 4B.5.5.  | Ongoing.                                   |
|  | 13.5 Maintain the mine and associated areas of disturbance in a clean and tidy condition at all times.  | Ongoing.                                   |
|  | 13.6 Construct amenity bund around coal processing area to provide visual screening.  | At start of Project.                       |
| The operation of the Siding Springs Observatory is not affected by Project operations.             | 13.7 Use a maximum of six lighting plants for night-time activities.  | Ongoing.                                   |
|  | 13.8 Position and direct floodlights to minimise emissions.   | Ongoing.                                   |
| Ongoing communication with neighbours.   | 13.9 Maintain regular communications with those residents whose visual amenity is affected by the Project and implement any reasonable additional controls to further reduce the impact on their visual amenity.  | Ongoing.                                   |
| <b>14. Soils, Land Capability and Agricultural Suitability</b>                                     |   |  |
| Maintenance of soil value for rehabilitation and minimisation of soil loss through erosion.        | 14.1 Strip topsoil from each SMU to a depth of 15cm. Stockpile topsoil for later retrieval and spreading over specific areas during the first 18 to 24 months of mine operations. Beyond this period, Project Site topsoil would be typically directly transferred onto sections of the final landform. | Ongoing.                                   |

**Table 5.1 (Cont'd)**  
**Draft Statement of Commitments for Site Operations and Management**

| Desired Outcome  | Action  | Timing   |
|--|---|----------|
| <b>14. Soils, Land Capability and Agricultural Suitability (Cont'd)</b>                              |   |          |
| Maintenance of soil value for rehabilitation and minimisation of soil loss through erosion. (Cont'd) | 14.2 Strip subsoil from each SMU to a depth of 50cm below the topsoil. Stockpiles would be available for re-spreading as areas become available for rehabilitation.   | Ongoing. |
|  | 14.3 Strip further subsoil to bedrock and segregate each SMU.   | Ongoing. |
|  | 14.4 Place higher alkalinity soils over the surface of the overburden emplacement to provide neutralising capacity in the event pockets of acid forming rock are encountered.                                     | Ongoing. |
|  | 14.5 Install erosion protection around stockpiles of this material with direct transfer from source to sink commenced as soon as practicable.   | Ongoing. |
|  | 14.6 Topsoil stockpiles not exceed 2m in height and where practicable, be maintained as windrows in preference to larger structures.  | Ongoing. |
|  | 14.7 Seed any stockpiles with a non-persistent cover crop as soon as possible after they have been established to reduce erosion potential and assist in the maintenance of the biological viability of the soil. | Ongoing. |
|  | 14.8 Subsoil stockpiles to generally not exceed 3m in height and typically be placed in larger stockpiles than the topsoil.   | Ongoing. |
|  | 14.9 Maintain and regularly reconcile with rehabilitation requirements an inventory of soil resources present on the Project Site, ie. both in stockpiles and awaiting stripping.                                 | Ongoing. |
|  | 14.10 Utilise water management structures to divert surface water flow away from soil stockpile areas to reduce the potential for erosion.  | Ongoing. |
|  | 14.11 Place silt-stop fencing or similar immediately downslope of stockpiles where required, until stable vegetation cover is established.  | Ongoing. |
|  | 14.12 Monitor erosion from soil stockpiles or rehabilitated surfaces throughout the life of the Project with remedial works undertaken should erosion be observed.  | Ongoing. |
|  | 14.13 Undertake all clearing and topsoil stripping in campaigns on an as-needs basis.   | Ongoing. |

**Table 5.1 (Cont'd)**  
**Draft Statement of Commitments for Site Operations and Management**

Page 17 of 19

| Desired Outcome   | Action   | Timing  |
|---|--|---|
| <b>15. Bushfire Controls</b>  |  |   |
| Avoid fire initiation.  | 15.1 Clear vegetation away from blast (>20m).  | During blasting.                              |
|   | 15.2 Remove all coal from open cut around blast.   | As required.<br>Ongoing                       |
|   | 15.3 Undertake blast design by qualified personnel.  | Ongoing.                                      |
|   | 15.4 Undertake refuelling within designated fuel bays or within cleared area of the Project Site.  | Ongoing.                                      |
|   | 15.5 Turn vehicle engines off during refuelling.   | Ongoing.                                      |
|   | 15.6 Enforce no smoking policy in designated areas of the Project Site.  | Ongoing.                                      |
|   | 15.7 Maintain fire extinguishers within all site vehicles.   | Ongoing.                                      |
| To minimise the potential for spontaneous combustion of the coal stored and handled on site.  | 15.8 Regularly inspect and water stockpiles.   | Ongoing.                                      |
|   | 15.9 Control stockpile height and volume to limit the duration coal is retained in stockpiles.   | Ongoing.                                      |
|   | 15.10 Maintenance of housekeeping by mine management.  | Ongoing.                                      |
|   | 15.11 Ensure water cart is available to assist in extinguishing any fire ignited.  | Ongoing.                                      |
| <b>16. Socio-Economic</b>   |  |   |
| Enhance positive and minimise adverse effects on socio-economic environment. Maintain dialogue with Gunnedah Shire Council and surrounding residents. | 16.1 Implement a policy which encourages employment of local district personnel with training and certification of suitable local persons provided.                  | During recruitment and induction.<br>Ongoing. |
|   | 16.2 Provide a local induction kit to any new workers (from outside the district) including contact details for community groups and services throughout the region. | New arrivals.<br>Ongoing.                     |
|   | 16.3 Inform Gunnedah Council of the predicted increase of population based on employment at the Project.   | During recruitment.<br>Ongoing.               |

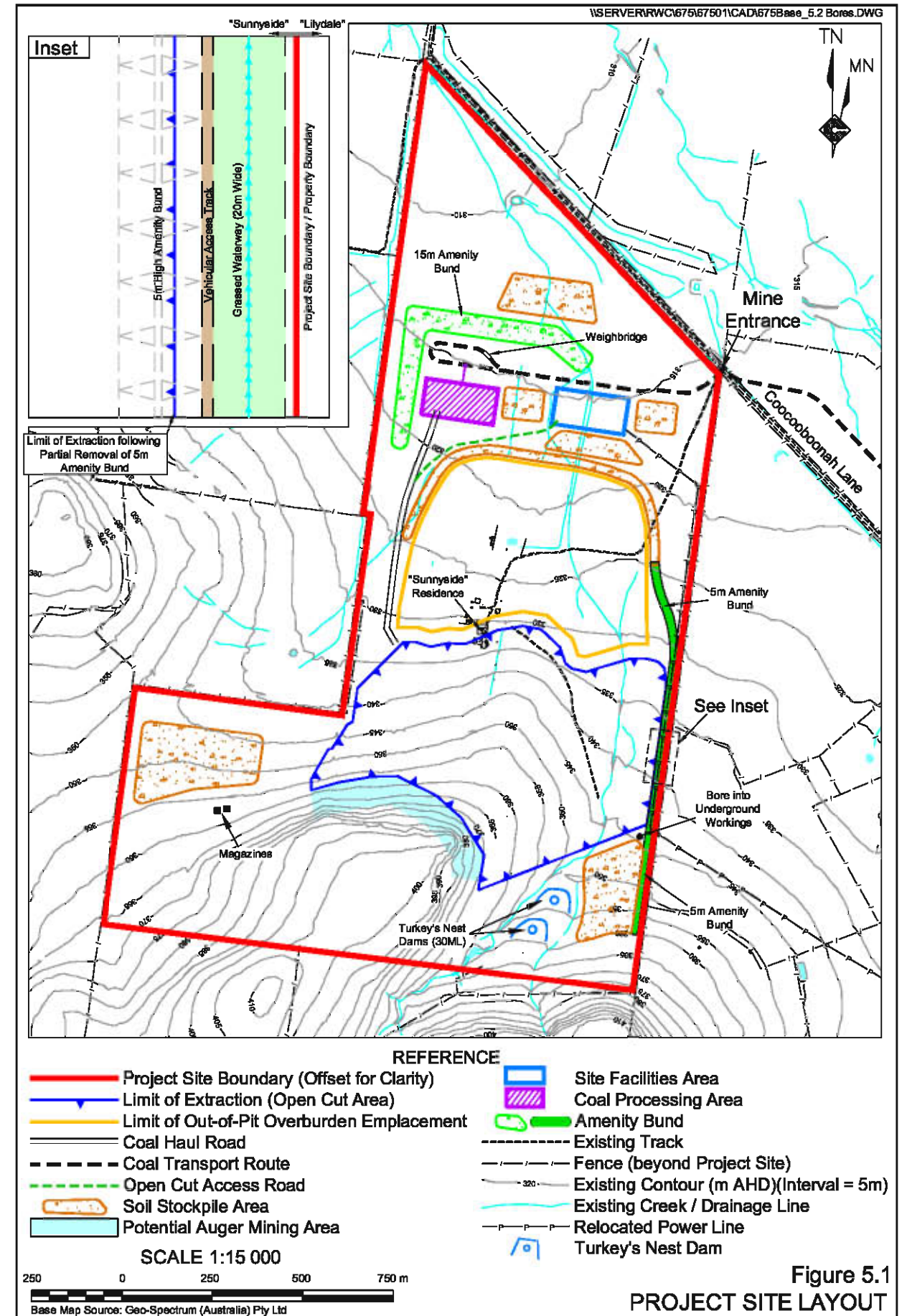
**Table 5.1 (Cont'd)**  
**Draft Statement of Commitments for Site Operations and Management**

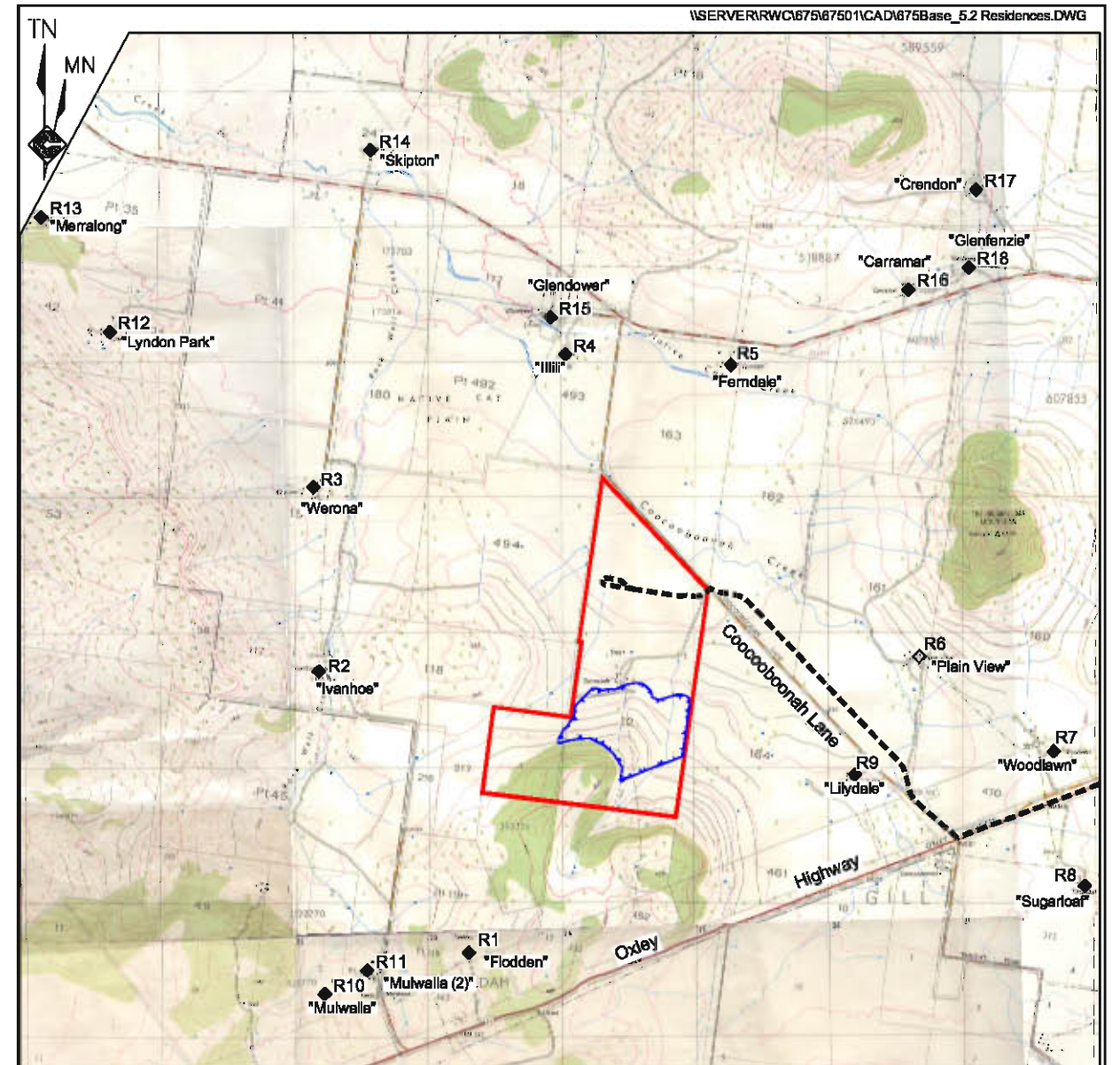
| Desired Outcome  | Action | Timing  |  |
|--|--------|---|--|
| <b>17. Rehabilitation</b>  |        |   |  |
| Ensure ongoing viable landuse post-mining.   | 17.1   | Stabilise earthworks, drainage lines and disturbed areas no longer required for mine-related activities in order to minimise erosion and the associated generation of sediment-laden water, and to reduce the visibility of activities from adjacent properties and the local road network. | Ongoing.   |
|  | 17.2   | Provide a low maintenance, geotechnically stable and safe landform which is commensurate with a variety of agricultural land uses and / or nature conservation.   | Ongoing.   |
|  | 17.3   | Blend the created landforms with the surrounding land fabric as far as practicable.   | Ongoing.   |
|  | 17.4   | Utilise native tree, shrub and grass species and / or pasture species comparable with either the existing vegetation communities or those which occurred in the area prior to mining and agriculture-related disturbance.   | Ongoing.   |
|  | 17.5   | Rehabilitate out-of-pit emplacement with agricultural pasture species and incorporate random tree plantings.  | Ongoing.   |
| <b>18. Management Plans</b>  |        |   |  |
| Develop and implement a series of Management Plans to assist with appropriate control of potentially impacting activities. | 18.1   | Prepare a Traffic Management Plan to ensure appropriate procedures are in place for public traffic during the realignment of Coocooboonah Lane and intersection upgrades – for submission with Section 138 permit applications to Gunnedah Shire Council and RTA.                           | Prior to commencement of the realignment of Coocooboonah Lane and intersection upgrades. |
|  | 18.2   | Mining Operations Plan submitted to the Department of Primary Industries.   | Prior to commencement of any site activities.  |
|  | 18.3   | Construction Noise Management Plan.   | Prior to commencement of site activities.  |
|  | 18.4   | Operations Noise Management Plan.   | Prior to commencing Project Operations stage.  |
|  | 18.5   | Traffic Noise Management Plan.  | Prior to commencement of coal transportation.  |

**Table 5.1 (Cont'd)**  
**Draft Statement of Commitments for Site Operations and Management**

| Desired Outcome   | Action                                       | Timing   |
|---|--|--|
| <b>18. Management Plans (Cont'd)</b>  |  |  |
| Develop and implement a series of Management Plans to assist with appropriate control of potentially impacting activities (Cont'd). | 18.6 Koala Management Plan.                  | Prior to commencing site activities.                         |
|   | 18.7 Vegetation Management Plan.             | Prior to commencing site activities.                         |
|   | 18.8 Blast Monitoring Plan.                  | Prior to blasting commencing and ongoing.                    |
|   | 18.9 Air Quality Monitoring Plan.            | Prior to commencing site activities.                         |
|   | 18.10 Surface Water Management Plan.         | Already produced and to be updated prior to site activities. |
|   | 18.11 Groundwater Management Plan            | Within 6 months of the start of mining operations.           |
|   | 18.12 Archaeological Site Management Plan.   | Prior to blasting commencing.                                |
|   | 18.13 Waste Management Plan.                 | Within 6 months of the start of site establishment.          |
|   | 18.14 Spontaneous Combustion Monitoring Plan | Within 6 months of the start of mining operations.           |
|   | 18.15 Hydrocarbon Management Plan.           | Prior to commencing site activities.                         |
|   | 18.16 Bushfire Management Plan.              | Prior to commencing site activities.                         |

This page has intentionally been left blank





- REFERENCE
- Project Site Boundary
  - Limit of Extraction (Open Cut Area)
  - - - Coal Transport Route
  - R1 ◆ Non-Project-related Residence
  - R6 ◇ Project-related Residence

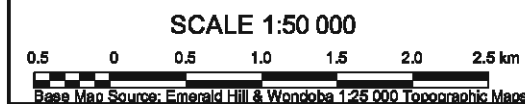


Figure Prepared by R.W. Corkery & Co. Pty Ltd

Figure 5.2  
SURROUNDING RESIDENCES

