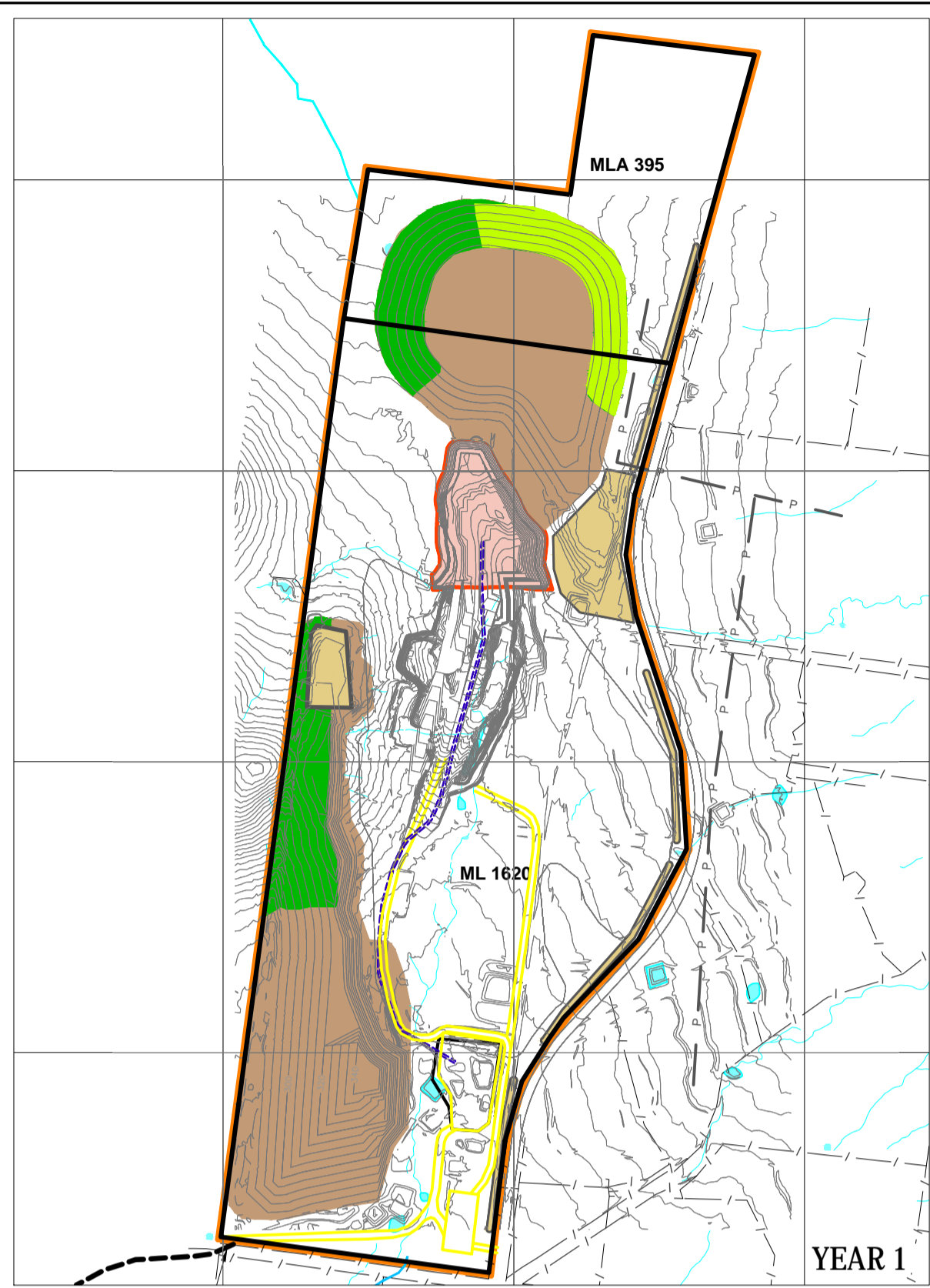
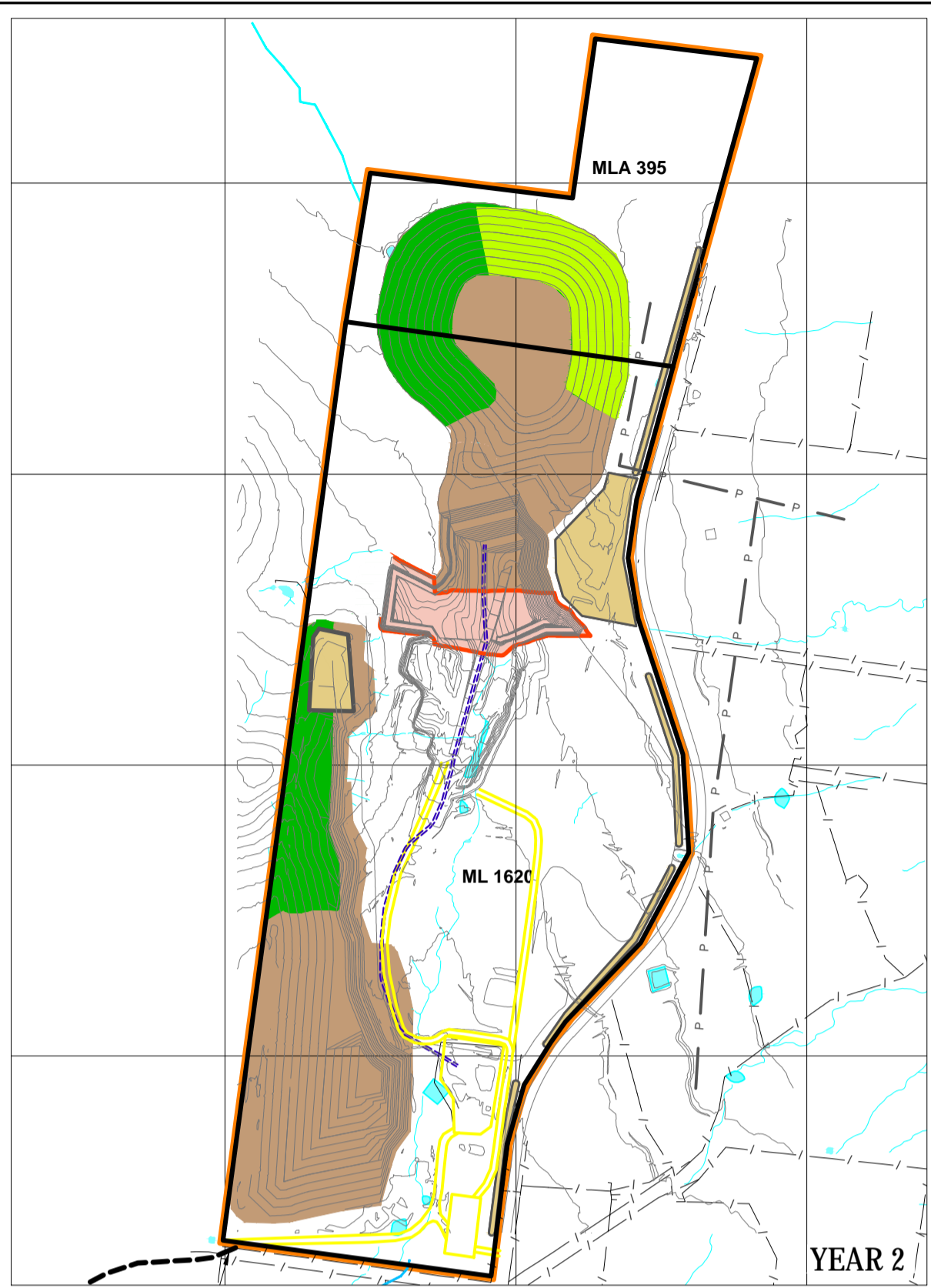


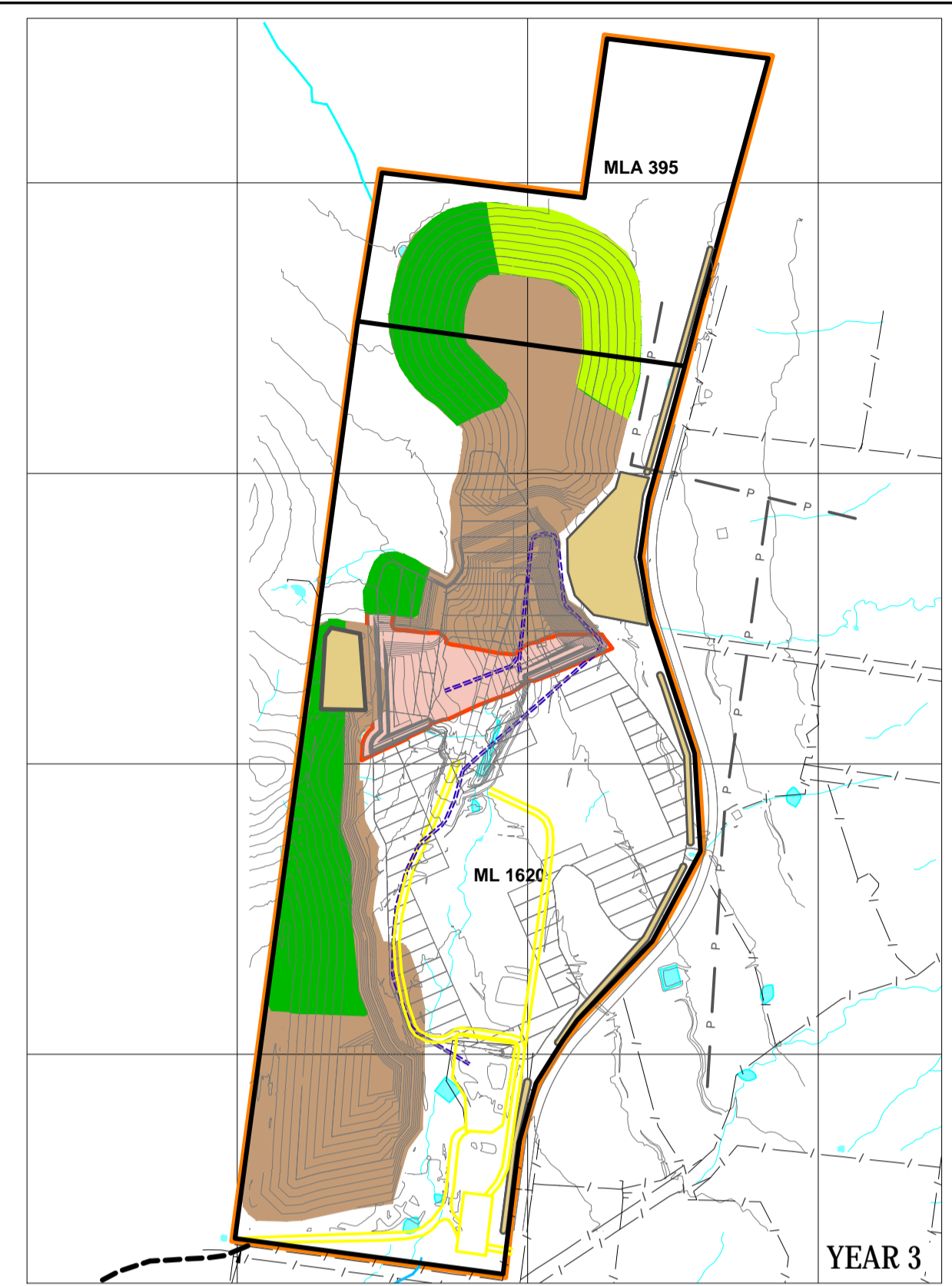
End of MOP Term - YEAR 7



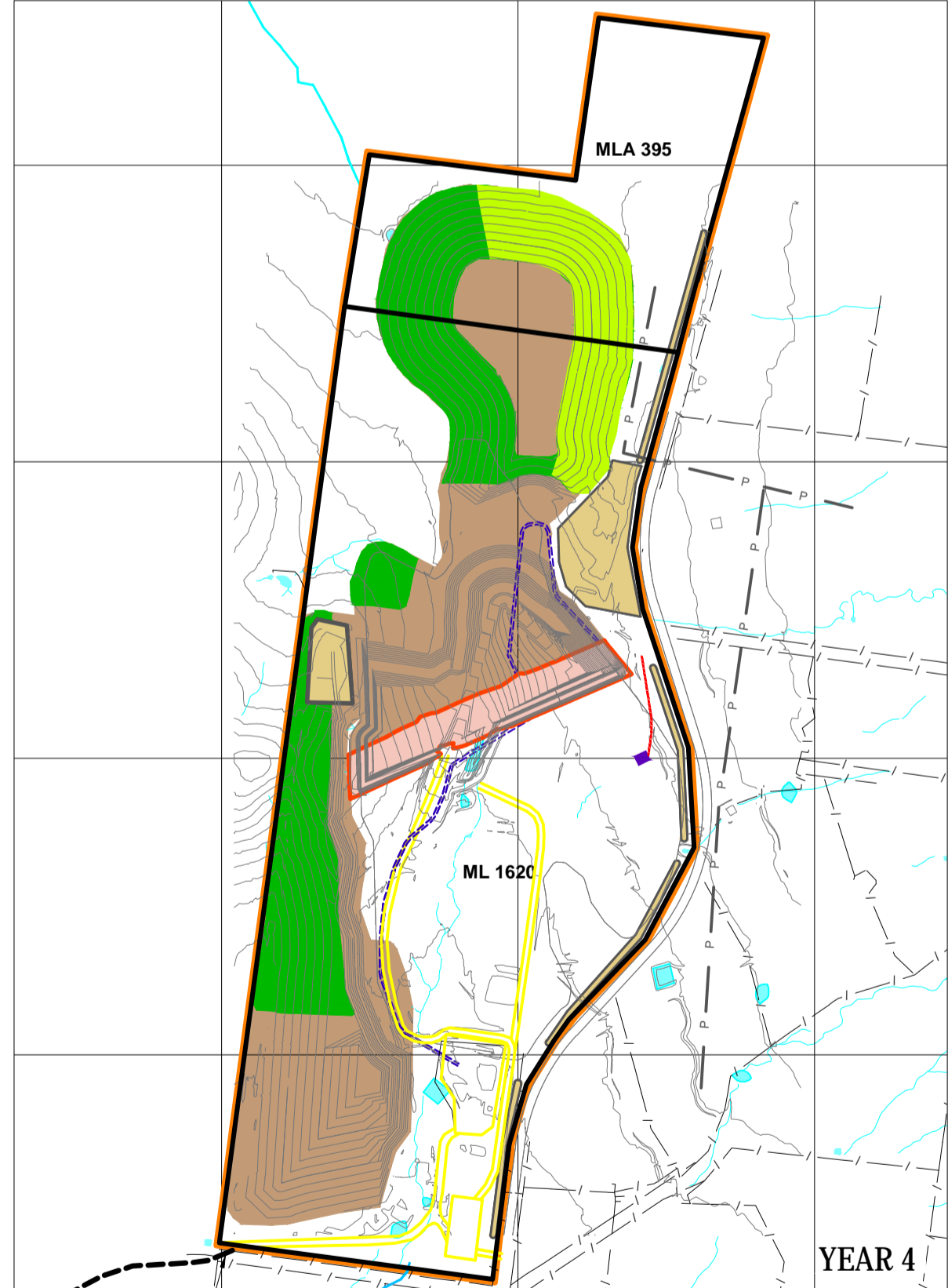
YEAR 1



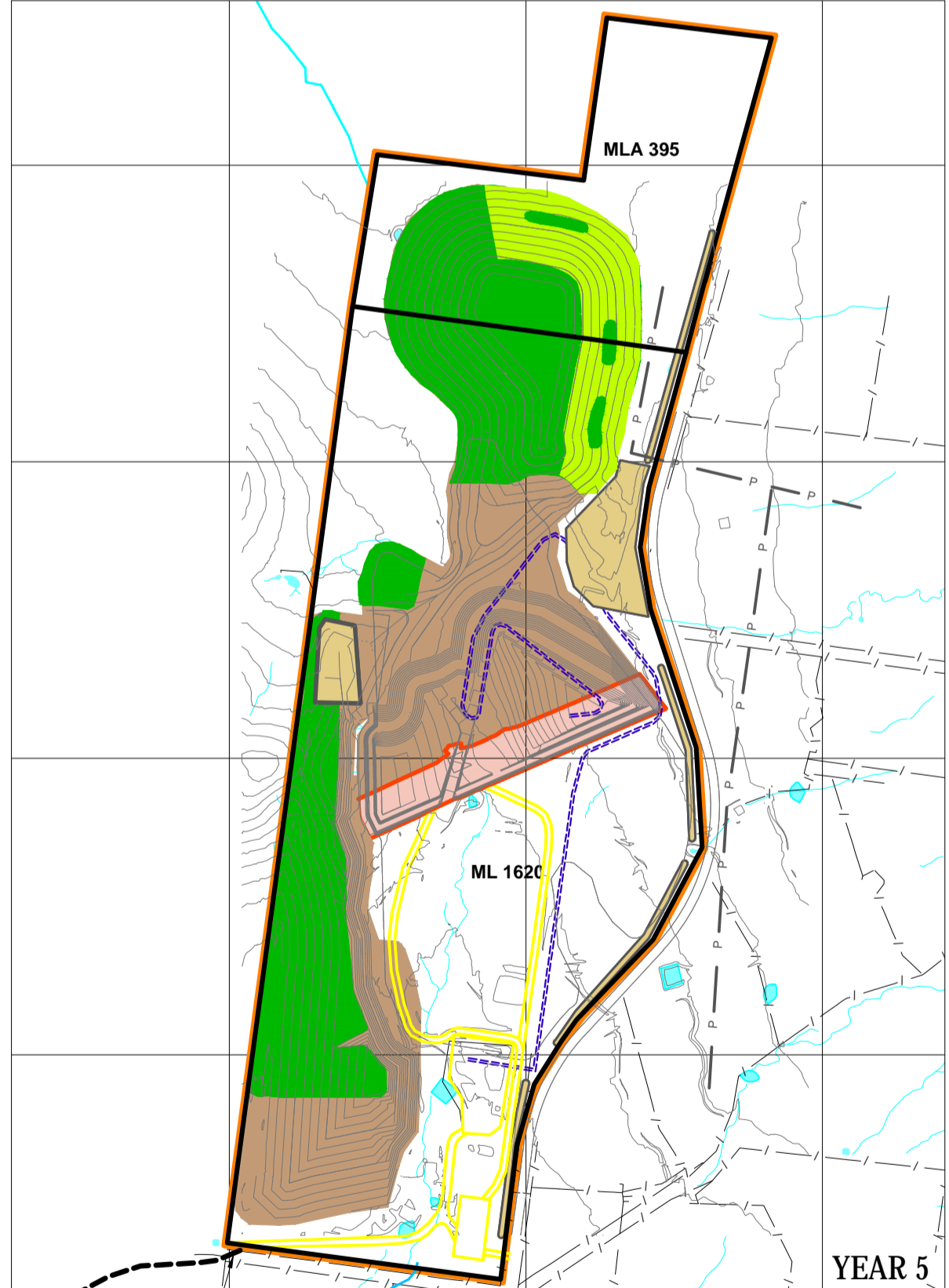
YEAR 2



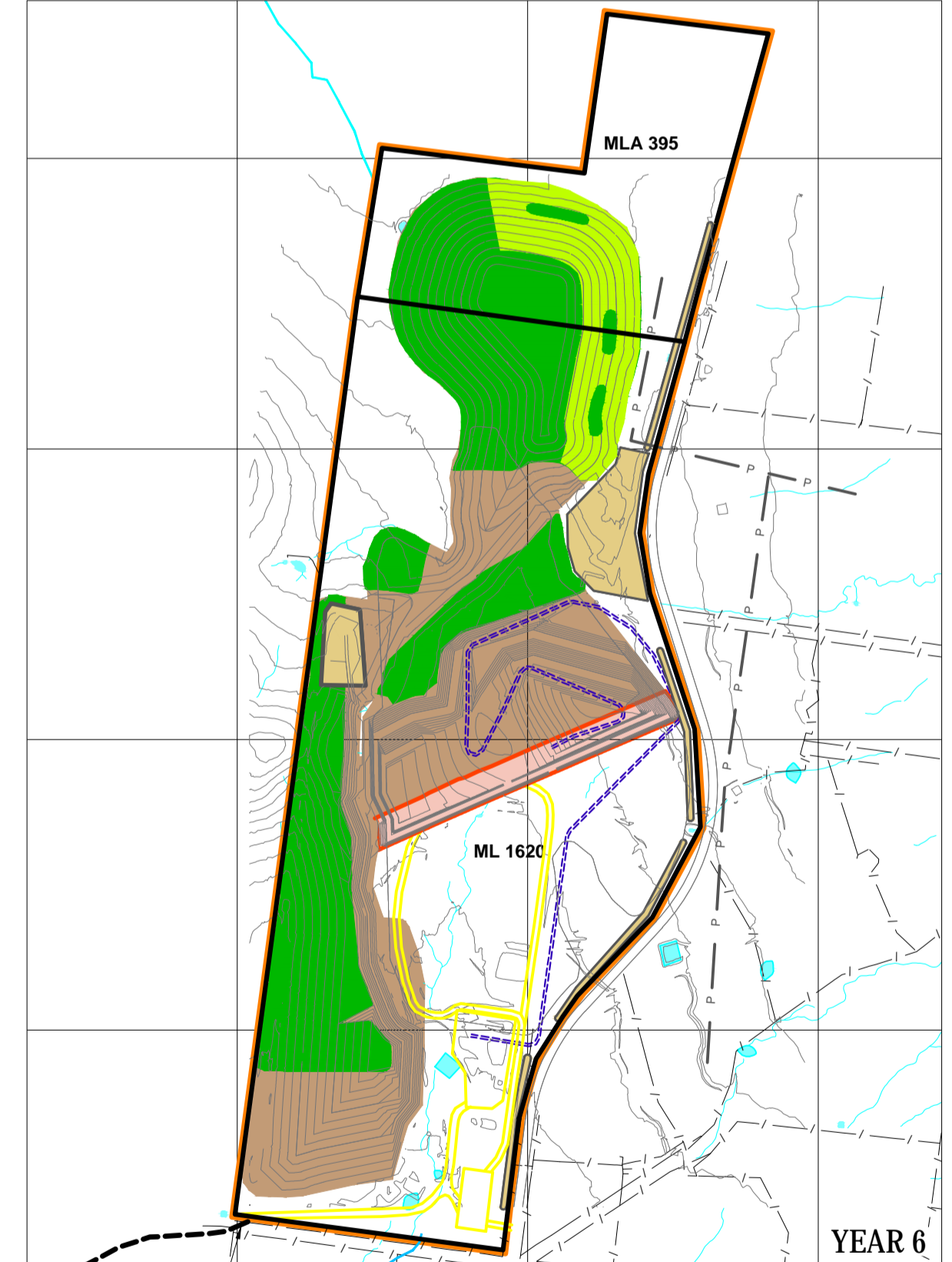
YEAR 3



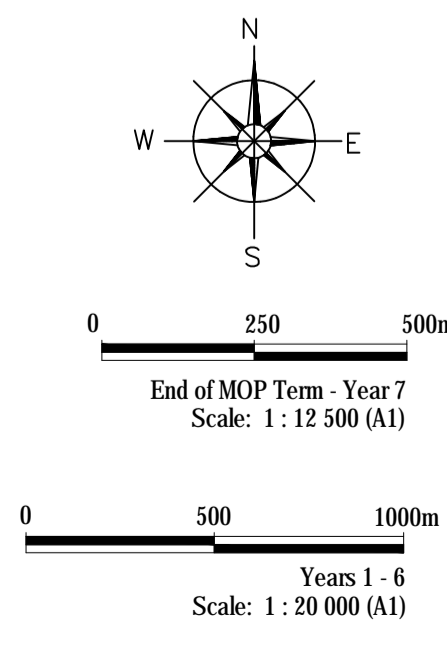
YEAR 4



YEAR 5



YEAR 6



LEGEND

- Project site boundary
- Mine lease boundary
- Fence
- Coal transport route
- Dam
- Water course
- Power line
- Haul Road
- Area disturbed by infrastructure (prior to this MOP)
- Area disturbed by mining (this MOP)
- Area disturbed by overburden emplacement (this MOP)
- Soil stockpiling areas
- Clean water flow
- Dirty water flow - contour bank
- Dirty water flow - channel
- Sump
- <<<< Drop structure
- Clean water dam
- Dirty water dam
- Clean water pump line
- Dirty water pump line
- Surface water sampling site
- Groundwater monitoring site
- ★ Licenced Discharge Point
- Rehabilitated Pasture
- Rehabilitated Bushland

NOTE:
FYUJXgchUY%\$s

Date of Application:	Checked by:
Compiled by:	Certified by: (Mine Surveyor)
Revised by:	Endorsed by: (Manager of Mining Engineering)

ROCGLLEN COAL MINE - MINING OPERATION PLAN

Proposed Rehabilitation

Date: 12-08-11	Scale: Refer scale bar	Plan No.:	5
Prepared by: GSS Environmental			