



WHITEHAVEN COAL LIMITED

ABN 68 124 425 396
Ground Floor, Ann Place
895 Ann Street
Fortitude Valley QLD 4006
PO Box 2440
Fortitude Valley BC
QLD 4006
Ph: 07 3000 5690
Fax: 07 3000 5699
Web: www.whitehaven.net.au

19 November 2007

WHITEHAVEN COAL LIMITED (ASX:WHC)

PROJECT APPROVAL FOR NARRABRI NORTH COAL PROJECT

Whitehaven Coal is pleased to advise that it has today received Project Approval for Stage 1 of the Narrabri North Coal Project from the NSW Minister for Planning, The Hon Frank Sartor MP.

The Narrabri North Project covers approximately half of Whitehaven's Narrabri coal tenement, which is located some 20 kilometres south of the town of Narrabri in the North West of NSW.

Exploration of Whitehaven's Narrabri coal tenement has so far generated total coal resources of some 438 million tonnes (Mt), of which the Narrabri North area contains approximately 230 Mt.

Construction of the Narrabri North Project will commence in early 2008, with exploration of the Narrabri South area to continue.

Managing Director, Keith Ross said that approval of the Narrabri North development is a major milestone for Whitehaven Coal, as the Narrabri area is the cornerstone of Whitehaven Coal's expansion plans.

More detailed information on the Narrabri Project, including coal resources and reserves is contained in the attached extract from Whitehaven Coal's recent investor presentation.

Keith Ross – Managing Director
Kate Kerrison – Kate Kerrison + Company

Tel: 07 3000 5690
Tel: 0413 946 704
Email: kate@katekerrison.com.au

WHC's assets



Narrabri North and Narrabri South (100%)

- ▲ Coal Type: Thermal
- ▲ Underground mine in development (North) and exploration project (South)
- ▲ Forecast first coal production: Q4 CY2008
- ▲ Life >30 yrs at +6 Mtpa at Narrabri North

Werris Creek (40%)

- ▲ Coal Types: PCI, Thermal
- ▲ Operating opencut mine



Bonshaw (66.7%)

- ▲ Coal Type: Coking
- ▲ Exploration prospect

Whitehaven Mining Precinct

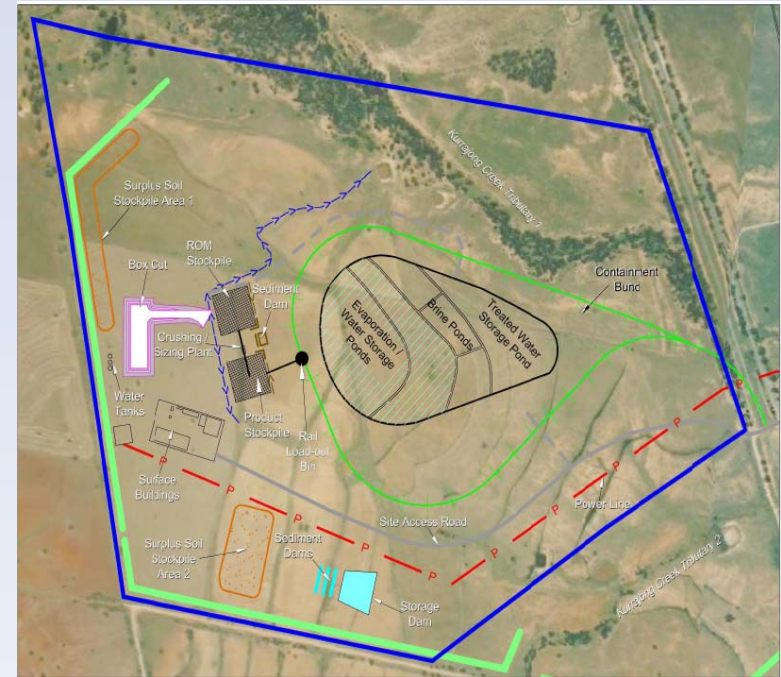
- ▲ Coal Types: Semi-soft coking, PCI, Thermal
- ▲ 2 operating mines (Canyon (100%), Tarrawonga O/C (70%),
- ▲ 2 new mines to be developed in 2008, Sunnyside (100%) and Belmont (100%)
- ▲ Central coal processing/loadout facilities at Gunnedah

Plan to increase managed production to ~11 Mtpa by FY2011

Narrabri North

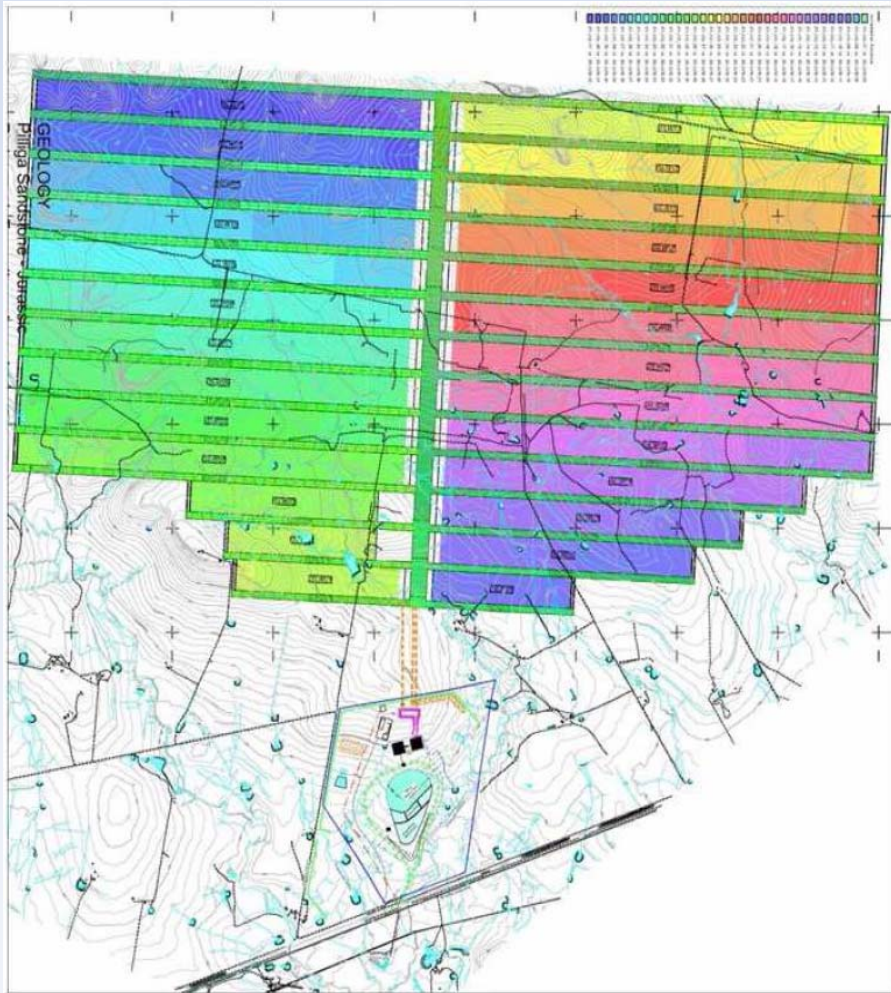


- Development Approval expected late CY2007
- Construction to commence early CY2008
- First coal production expected late CY2008
- Longwall (stage 2) planning well advanced
- Coal quality and yield expected to provide low cost, high profitability
- High quality thermal and PCI coal
- Potential for multiple longwalls
- Narrabri North infrastructure will service future expansion of production
- **Narrabri North resources:**



(Mt)	JORC 29 August 2007	Prospectus 3 May 2007	Change
Measured	88.6	60.8	+27.8
Indicated	81.0	57.0	+34.0
Inferred	60.0	120.0	-60.0
Total	229.6	237.8	-8.2

Narrabri North (continued)



Narrabri South



- Exploration since ASX listing in May has increased resources at Narrabri South by ~110 Mt
- Central Narrabri North infrastructure to service future development
- Potential for multiple longwalls
- Product quality and yields similar to Narrabri North
- **Narrabri South resources:**

(Mt)	JORC 29 August 2007	Prospectus 3 May 2007	Change
Measured	30.7	0.3	+30.4
Indicated	103.0	28.0	+75.0
Inferred	75.0	70.0	+5.0
Total	208.7	98.3	+110.4

Narrabri a major development project



- Large resource of high quality coal adjacent to rail infrastructure
- Favourable conditions for high productivity underground mining and high yield of saleable coal
- Suitable for staged development of multiple longwalls, serviced by common infrastructure
- **Combined Narrabri resources – JORC 29 August 2007**

(Mt)	Narrabri North	Narrabri South	Narrabri Total
Measured	88.6	30.7	119.3
Indicated	81.0	103.0	184.0
Inferred	60.0	75.0	135.8
Total	229.6	208.7	438.3

Qualifications and Statement



- The information in this report that relates to Coal Reserves and Resources at Narrabri North and Narrabri South is based on information compiled by Mr Pat Hanna, who is a Member of the Australian Institute of Geoscientists. Mr Hanna FAusIMM, MAIG is a qualified geologist and is a full time employee of SRK Consulting (Australasia) Pty Ltd. Mr Hanna has sufficient experience which is relevant to the style of mineralisation and type of deposit under consideration and to the activity which he is undertaking to qualify as a Competent Person as defined in the 2004 Edition of the 'Australasian Code for Reporting of Exploration Results, Mineral Resources and Ore Reserves'. Mr Hanna consents to the inclusion in the report of the matters based on his information in the form and context in which it appears.*